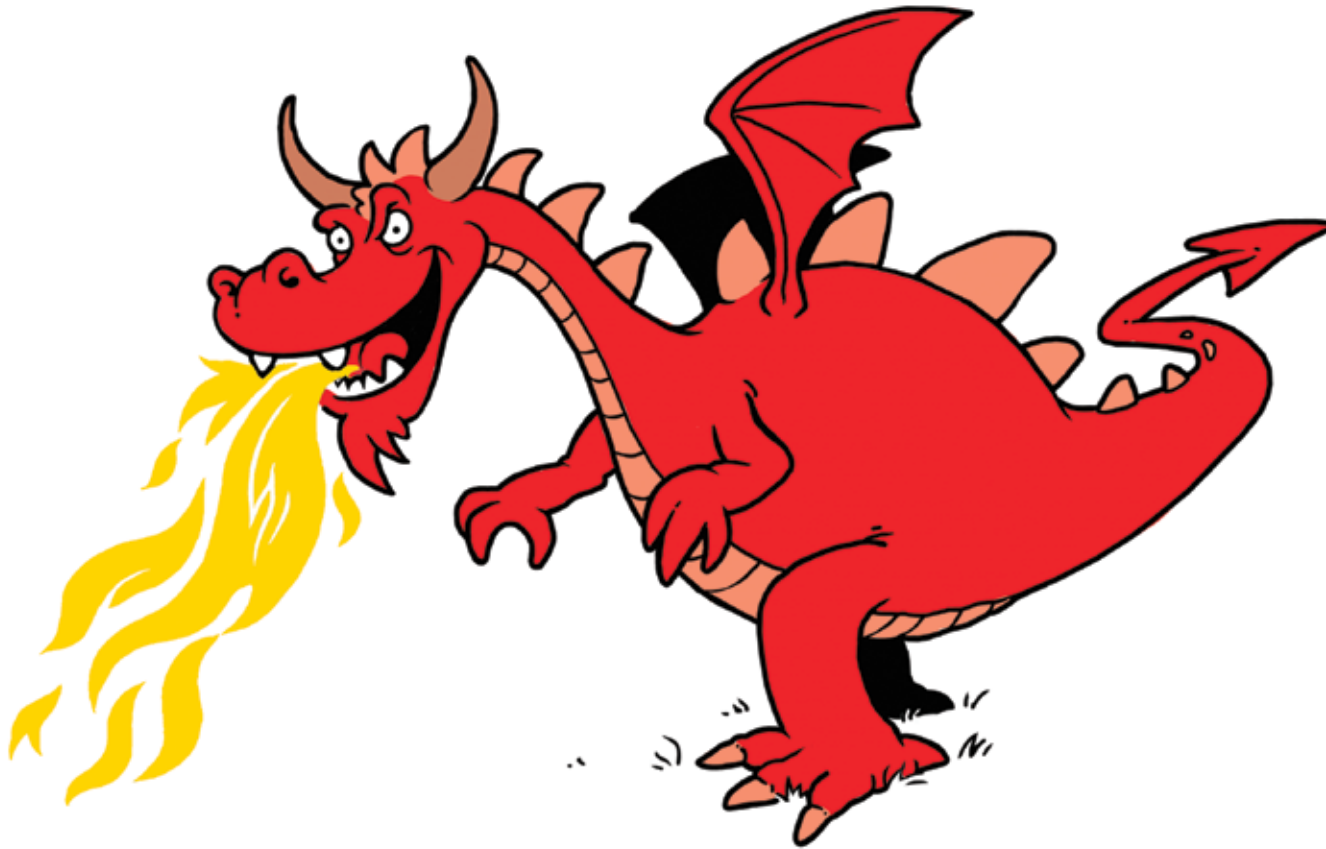


FROM A FOOL TO A DRAGON



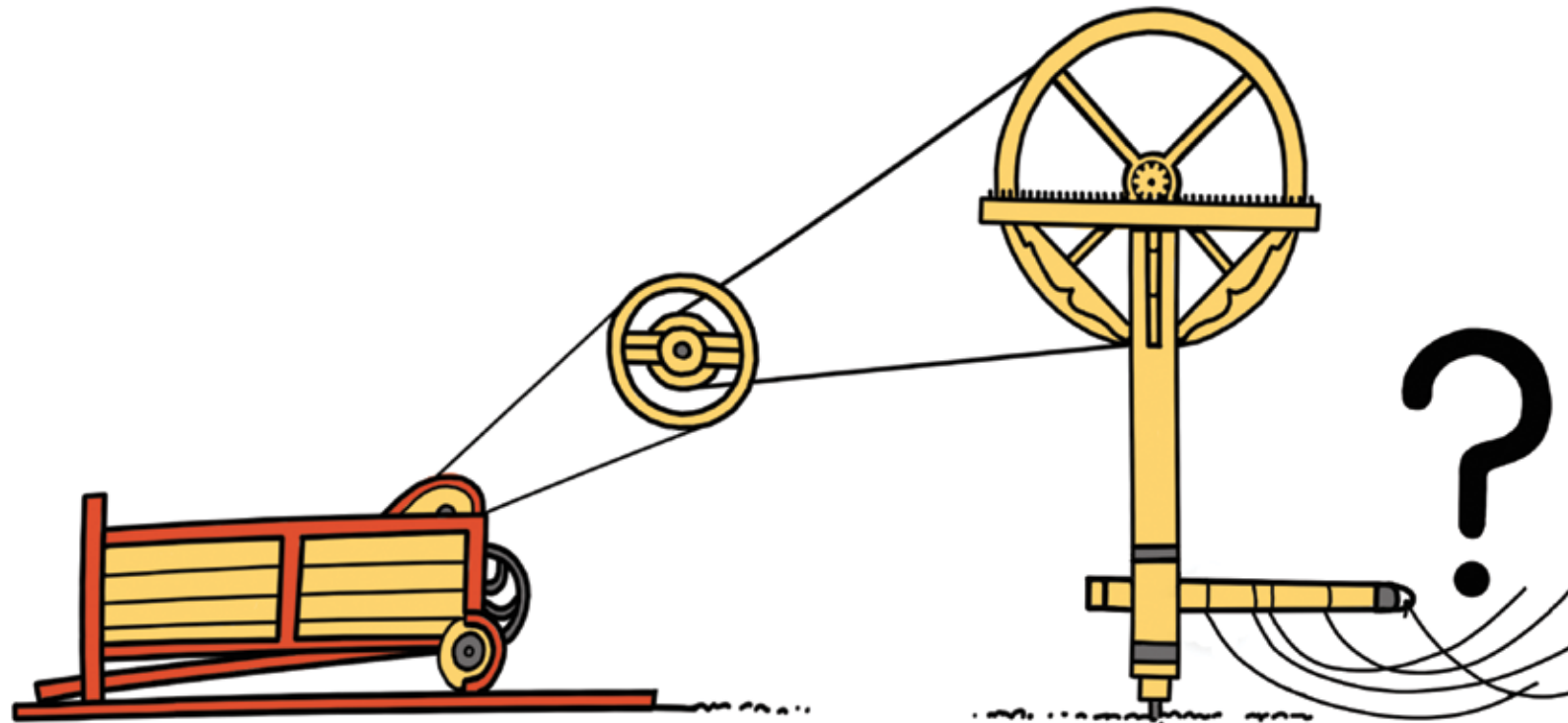


DO YOU RECOGNISE A FOOL?*

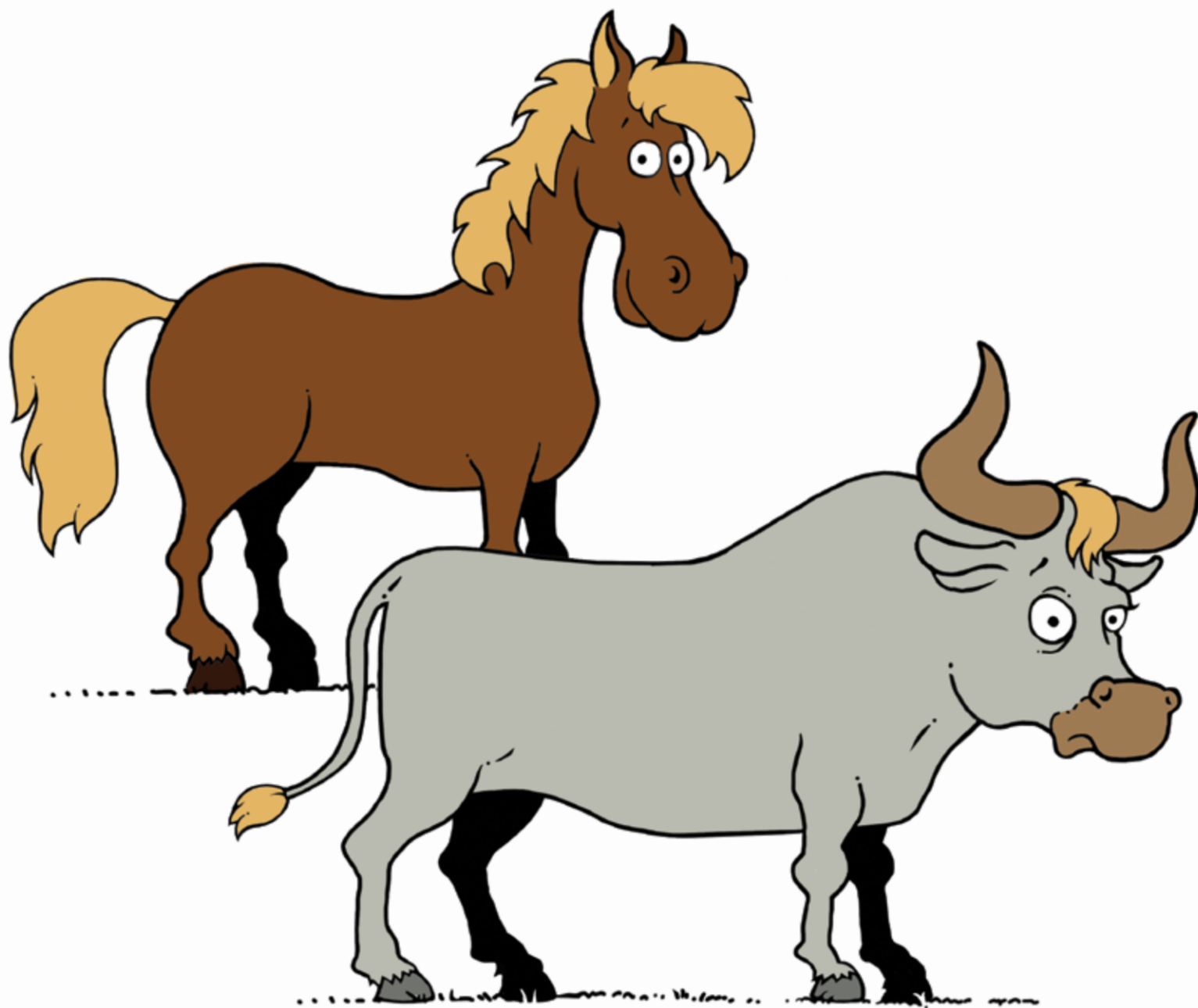
* FOOL IS THE SLOVENE WORD FOR A FLAIL.



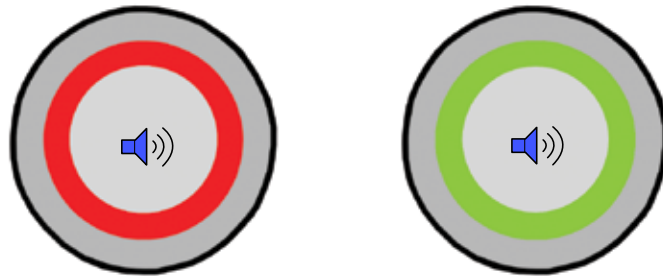
A FLAIL IS USED FOR
THRESHING CEREAL GRAIN.
A PERSON USING THE FLAIL
IS CALLED A THRESHER.



ORIGINALLY, THRESHING WAS
PERFORMED BY HAND, BUT LATER
AN ANIMAL-DRIVEN CAPSTAN WAS USED.
GUESS WHAT ANIMALS WERE
MOST OFTEN USED TO DRIVE IT?

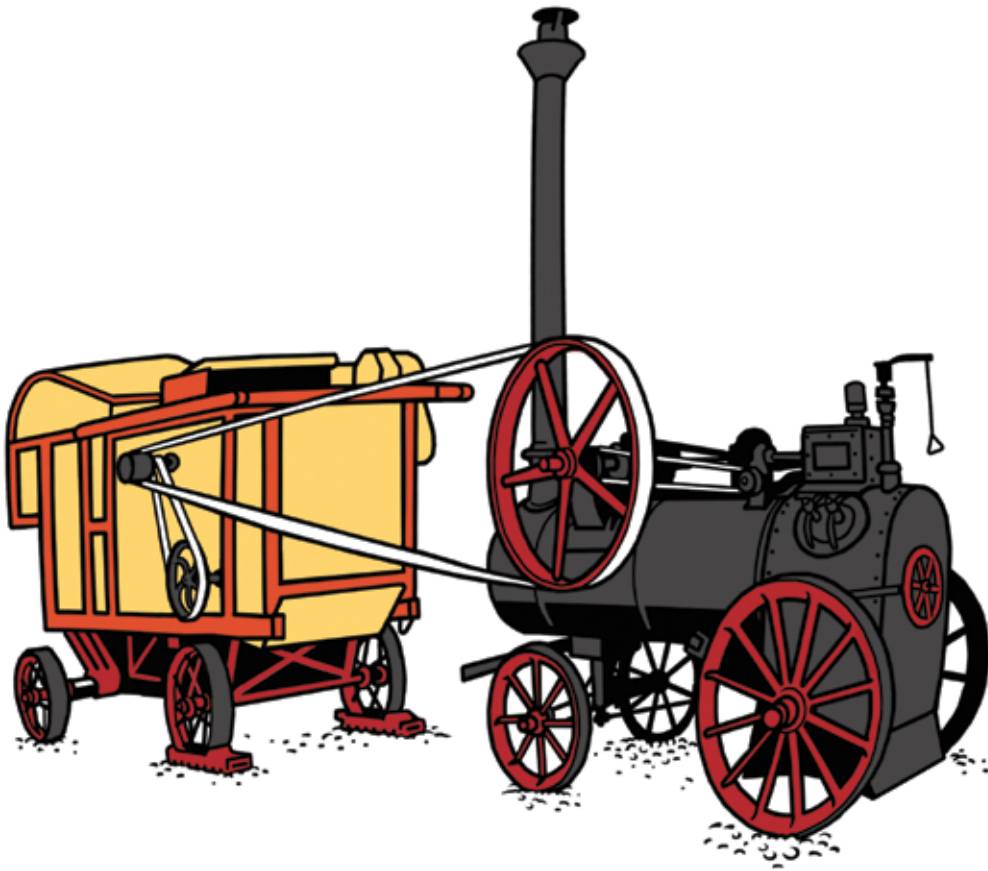


A HORSE, AN OX

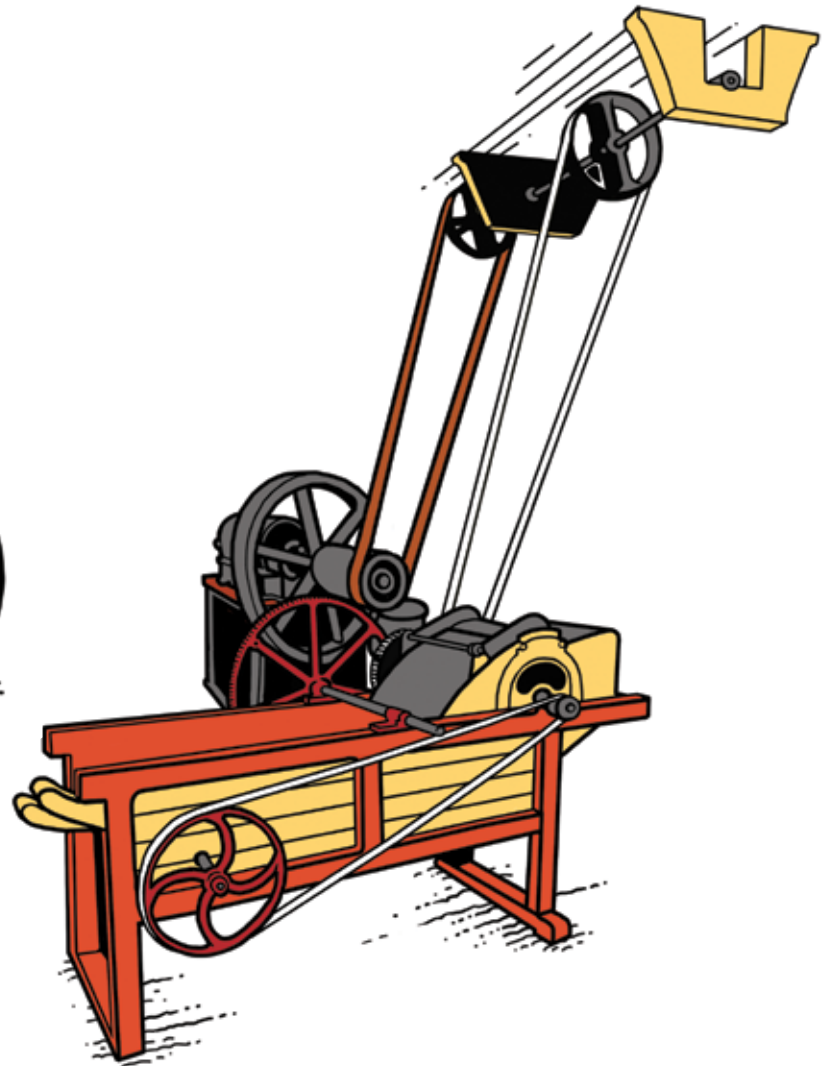


PRESS THE BUTTONS AND THE SOUNDS
WILL HELP YOU DISCOVER WHICH
TWO POWER SOURCES REPLACED
DRAFT ANIMALS.

AND THESE ARE...

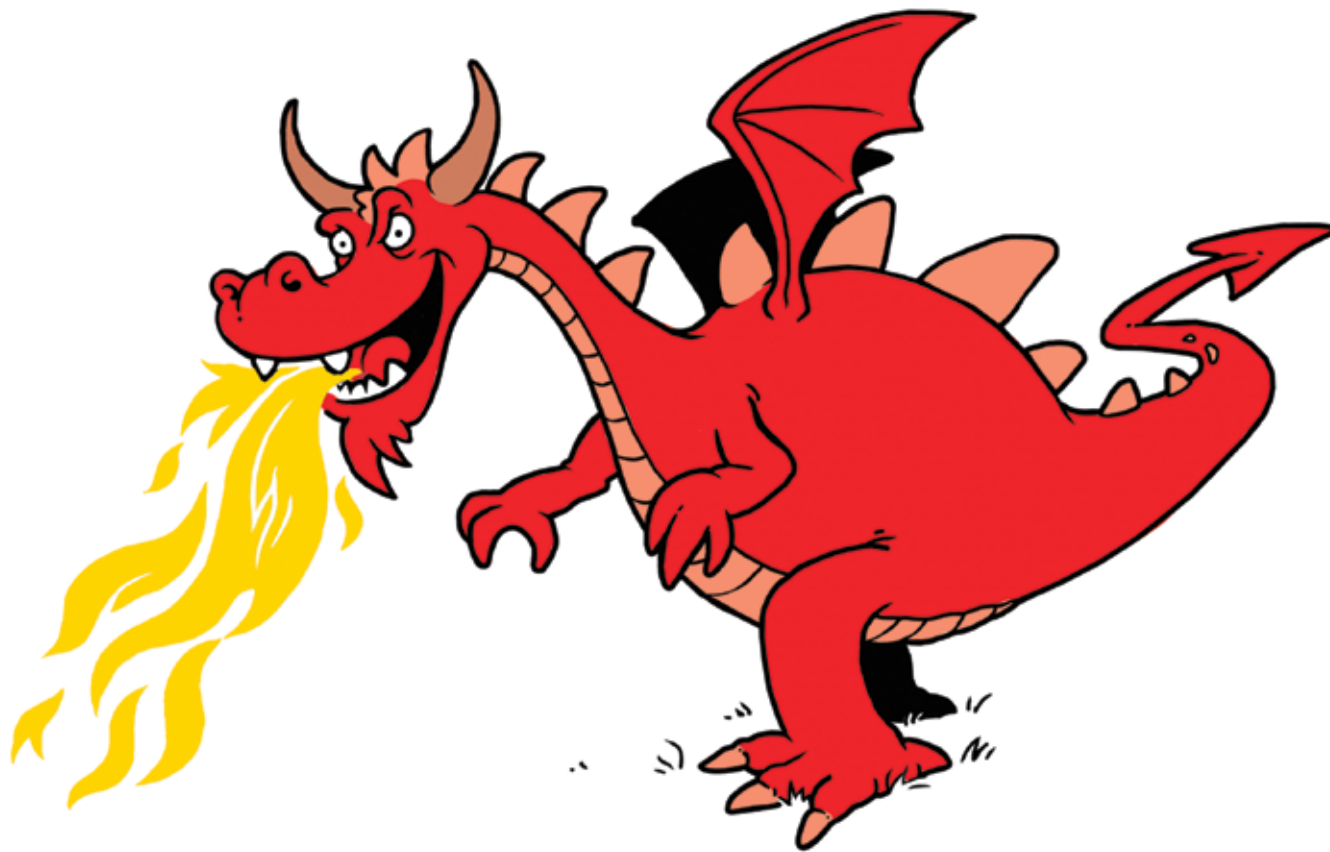


THE STEAM-POWERED
TRACTION ENGINE.

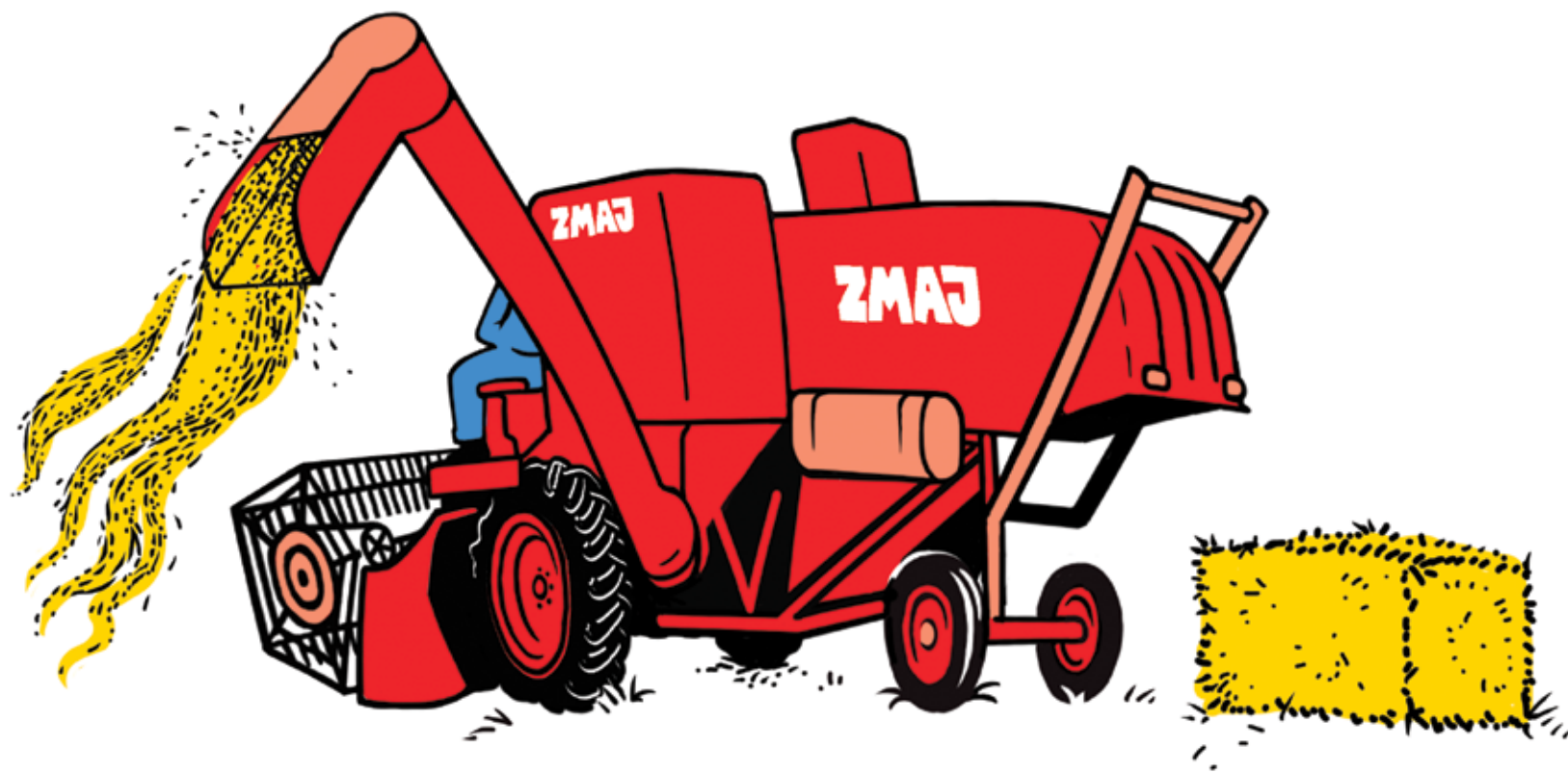


THE INTERNAL
COMBUSTION
ENGINE.

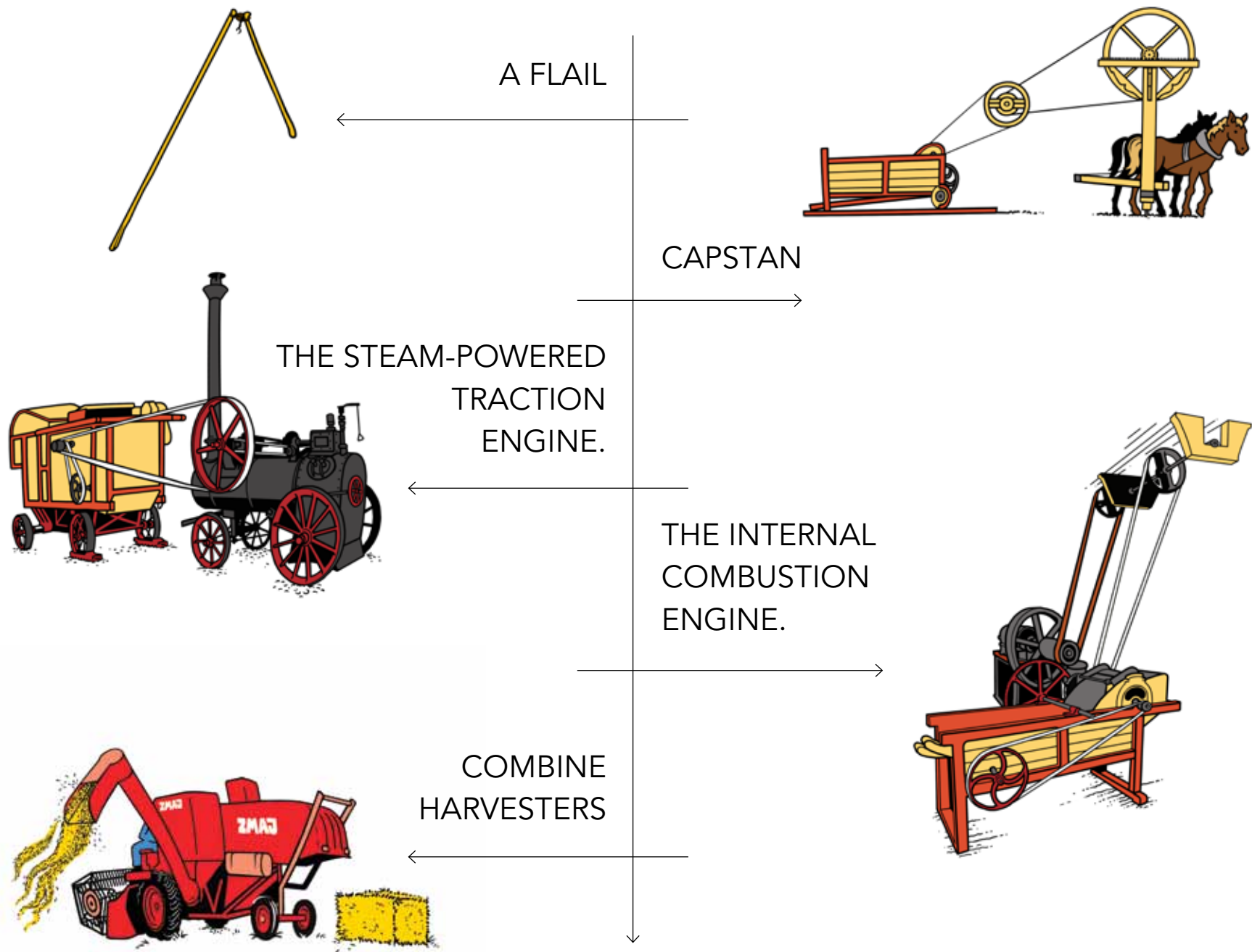




AND WHAT IS A DRAGON DOING
IN THE MUSEUM? NOT JUST ANY
DRAGON, BUT ONE SPITTING GRAINS
AND STRAW BALES INSTEAD OF FIRE!



ZMAJ (DRAGON) WAS
THE NAME OF THE FACTORY
MANUFACTURING
COMBINE HARVESTERS.



YOU CAN SEE OBJECTS CONNECTED WITH CEREAL GRAIN THRESHING IN THE TECHNICAL MUSEUM OF SLOVENIA. IT WON'T BE DIFFICULT TO FIND THE FOOL, BUT THE DRAGON IS VERY GOOD AT HIDING FROM VISITORS...



LET THE WORK BE HEARD

FROM A FOOL TO A DRAGON

Text: Irena Marušič, Mojca Slapar

Illustrations: Matjaž Dekleva

Expert consultants: Boris Brovinsky, Estera Cerar,
Milojka Čepon, Romana Erhatic Širnik,
Irena Marušič, Mojca Slapar, Vladimir Vilman

English translation: Melita Silič

Book design: Maša Kozjek

Logotype design: Faculty of Architecture

Preparation of e-book: Urša Vodopivec

Technical Museum of Slovenia, 2015

Director: Natalija Polenec

CIP - Kataložni zapis o publikaciji
Narodna in univerzitetna knjižnica, Ljubljana

631.3(02.053.2)(0.034.2)
087.5(0.034.2)

MARUŠIČ, Irena

From a fool to a dragon [Elektronski vir] / [text Irena Marušič, Mojca Slapar ; illustrations Matjaž Dekleva ; English translation Melita Silič]. - Ljubljana : Tehniški muzej Slovenije, 2015. - (Let the work be heard)

Način dostopa (URL): http://www.tms.si/fck_files/file/Naj_se_slisi_delo/Knjizica14.pdf

ISBN 978-961-6464-40-6 (pdf)
1. Gl. stv. nasl. 2. Slapar, Mojca
280353792