



19 GRADBENIŠTVO
CONSTRUCTION

št./No 1

PREGLED GIBANJA GRADBENIH AKTIVNOSTI NA PODLAGI IZDANIH GRADBENIH DOVOLJENJ, SLOVENIJA, 1999–2009 –
končni podatki

OVERVIEW OF THE DEVELOPMENT OF CONSTRUCTION ACTIVITIES ON THE BASIS OF BUILDING PERMITS ISSUED,
SLOVENIA, 1999-2009 – final data

- ▶ Od 1999 do 2009 je bilo v Sloveniji izdanih skupaj več kot 63.000 dovoljenj za gradnjo stavb v skupni izmeri skoraj 27 milijonov m²; skoraj 43.000 dovoljenj je bilo izdanih za gradnjo stanovanjskih stavb v skupni izmeri skoraj 14 milijonov m²; nekaj več kot 20.000 dovoljenj pa za gradnjo nestanovanjskih stavb v skupni izmeri skoraj 13 milijonov m².
- ▶ Največ dovoljenj za gradnjo stavb je bilo izdanih v letu 1999, in sicer nekaj več kot 6.900, in v letu 2006, skoraj 6.400.
- ▶ Število izdanih gradbenih dovoljenj se od leta 2007 zmanjšuje: v 2008 je bilo izdanih za 8 % manj kot v 2007, v 2009 pa za 15 % manj kot v 2008.
- ▶ Največ gradbenih dovoljenj je bilo izdanih za gradnjo enostanovanjskih stavb, nekaj nad 37.500, potem za gradnjo nestanovanjskih kmetijskih stavb, skoraj 5.900, in za gradnjo dvostanovanjskih stavb, skoraj 3.400.
- ▶ Za gradnjo kulturnih spomenikov je bilo v teh enajstih letih izdanih nekaj več kot 20 dovoljenj, za gradnjo muzejev in knjižnic nekaj več kot 70, za gradnjo postaj, terminalov in stavb za izvajanje elektronskih komunikacij ter z njimi povezanih stavb pa skoraj 70.
- ▶ Fizičnim osebam je bilo izdanih skoraj 35.200 dovoljenj za gradnjo enostanovanjskih stavb, skoraj 5.800 za gradnjo nestanovanjskih kmetijskih stavb in skoraj 2.800 za gradnjo dvostanovanjskih stavb.
- ▶ Pravnim osebam je bilo izdanih nekaj več kot 2.300 dovoljenj za gradnjo enostanovanjskih stavb, nekaj več kot 1.350 za gradnjo tri- in večstanovanjskih stavb in prav tako nekaj več kot 1.350 za gradnjo industrijskih stavb.
- ▶ Between 1999 and 2009 almost 63,000 building permits were issued in Slovenia for the total floor area of almost 27 million square metres. Almost 43,000 building permits were issued for residential buildings (for the total floor area of almost 14 million square metres) and just over 20,000 for non-residential buildings (for the total floor area of almost 13 million square metres).
- ▶ In the observed period, most building permits were issued in 1999 (just over 6,900) and in 2006 (almost 6,400).
- ▶ The number of building permits has been decreasing since 2007; compared to the previous year, in 2008 it went down by 8% and in 2009 by 15%.
- ▶ Most building permits were issued for one-dwelling buildings (over 37,500), for non-residential farm buildings (almost 5,900) and for two-dwelling buildings (almost 3,400).
- ▶ The fewest building permits were issued for historic and protected monuments (in eleven years only slightly more than 20), for museums and libraries (just over 70) and for communication buildings, stations, terminals and associated buildings (almost 70).
- ▶ Between 1999 and 2009 almost 35,200 building permits were issued to natural persons for constructing one-dwelling buildings, almost 5,800 for constructing non-residential farm buildings, and almost 2,800 for constructing two-dwelling buildings.
- ▶ In the same period most building permits issued to legal persons were issued for constructing one-dwelling buildings (over 2,300), three- and more dwelling buildings (just over 1,350) and industrial buildings (also just over 1,350).

Tabela 1: Število izdanih gradbenih dovoljenj za stavbe in razlika v njihovem številu glede na prejšnje leto, investitor skupaj, Slovenija
Table 1: Permits issued for buildings and increase/decrease in the number of buildings over the previous year, investor total, Slovenia

	Število stavb Nr. of buildings	Povečanje/zmanjšanje števila stavb glede na preteklo leto (%) Increase/decrease in the Nr. of buildings compared to the previous year (%)
1999	6.915	
2000	6.100	-12
2001	5.567	-9
2002	5.249	-6
2003	5.660	8
2004	5.541	-2
2005	5.839	5
2006	6.376	9
2007	5.861	-8
2008	5.373	-8
2009	4.570	-15

DOVOLJENJA ZA GRADNJO STAVB, IZDANA PRAVNIM IN FIZIČNIM OSEBAM**Letno izdanih povprečno več kot 5.700 gradbenih dovoljenj**

V letih od 1999 do 2009 je bilo v Sloveniji izdanih povprečno nekaj več kot 5.730 dovoljenj za gradnjo stavb na leto.

V letih 1999, 2000 in 2006 izdanih več kot 6.000 gradbenih dovoljenj

Največ dovoljenj za gradnjo stavb v Sloveniji je bilo v času od 1999 do 2009 izdanih v letu 1999, in sicer nekaj več kot 6.900. V letu 2000 je bilo izdanih za 12 % manj kot v letu 1999, v letu 2001 pa za 9 % manj kot v letu 2000 in v letu 2002 pa za 6 % manj kot v letu 2001. V letu 2003 se je število izdanih dovoljenj za gradnjo stavb v primerjavi z letom 2002 povečalo za 8 %. V letu 2004 pa je znova upadlo, in to v primerjavi z letom 2003 za 2 %. V letih 2005 in 2006 se je začelo število izdanih dovoljenj za gradnjo stavb spet dvigati: leta 2005 je bilo izdanih za 5 % več kot leto prej, leta 2006 pa za 9 % več kot leto prej. V letu 2006 se je še najbolj približalo številu iz leta 1999: izdanih je bilo namreč nekaj več kot 6.370 dovoljenj za gradnjo stavb ali za 8 % manj kot v letu 1999. Potem je znova upadalo: v letu 2007 je bilo izdanih za 8 % manj kot v letu 2006, leta 2008 pa za 8 % manj kot v letu 2007 in leta 2009 za 15 % manj kot v letu 2008.

BUILDING PERMITS ISSUED TO NATURAL AND LEGAL PERSONS IN SLOVENIA BETWEEN 1999 AND 2009**Over 5,700 building permits issued every year**

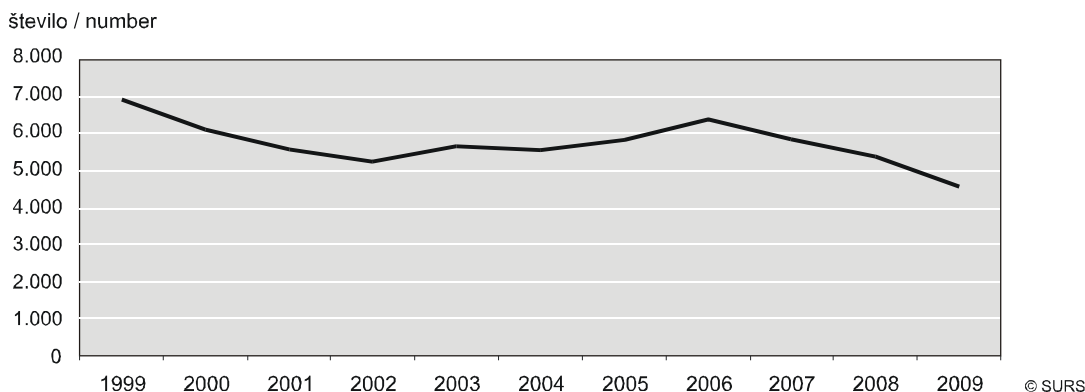
Between 1999 and 2009 on average just over 5,730 building permits were issued to natural and legal persons in Slovenia every year.

Over 6,000 building permits issued in 1999, 2000 and 2006

In the observed period most building permits in Slovenia were issued in 1999 (more than 6,900). In 2000, 12% less building permits than in 1999 were issued, while in 2001, 9% less building permits than in 2000 were issued. In 2002 again a decrease was recorded, this time by 6%. In 2003 the number of issued building permits increased by 8% over the previous year, while in 2004 again a decrease over the previous year was recorded (by 2%). In 2005 and 2006 the number increased by 5% and 9%, respectively. In 2006 the number of building permits drew the closest to the number from 1999: 6,370 building permits is 8% less than in 1999. In 2007 the number of building permits decreased by 8% compared to the previous year and in 2008 again by 8%. In 2009 the number dropped by 15%.

Grafikon 1: Stavbe, za katere so bila izdana gradbena dovoljenja, Slovenija

Chart 1: Buildings for which building permits were issued, Slovenia



Vir / Source: SURS / SORS

Tabela 2: Površina stavb, za katere so bila izdana gradbena dovoljenja, in razlika v njihovi površini glede na prejšnje leto, investitor skupaj, Slovenija

Table 2: Floor area in permits issued for buildings and increase/decrease in floor area over the previous year, investor total, Slovenia

	Površina stavb (1.000 m ²) Floor area (1.000 m ²)	Povečanje/zmanjšanje števila stavb glede na preteklo leto (%) Increase/decrease in the Nr. of buildings compared to the previous year (%)
1999	2.241	
2000	1.995	-11
2001	1.940	-3
2002	2.026	4
2003	2.290	13
2004	2.378	4
2005	2.520	6
2006	3.363	33
2007	3.412	1
2008	2.656	-22
2009	2.090	-21

Vir / Source: SURS / SORS



POVRŠINA STAVB, ZA KATERE SO BILA IZDANA GRADBENA DOVOLJENJA

V 11 letih skoraj 27 mio. m² stavb

Skupna površina stavb, za katere so bila v Sloveniji med letoma 1999 in 2009 izdana gradbena dovoljenja, in sicer fizičnim in pravnim osebam, je bila nekaj več kot 26.910.000 m².

Leti 2006 in 2007 zaznamovalo povečanje površine stavb, za katere so bila izdana gradbena dovoljenja

Gibanje površine stavb, za katere so bila med letoma 1999 in 2009 izdana gradbena dovoljenja, je bilo podobno gibanju števila v tem času izdanih dovoljenj za gradnjo teh stavb, le da je bila površina vseh stavb, za katere so bila v tem času izdana gradbena dovoljenja, največja v letu 2007, in ne v letu 1999, ko je bilo izdanih največ gradbenih dovoljenj za stavbe v obravnavanem obdobju. Skupna površina stavb, za katere so bila v letu 1999 izdana gradbena dovoljenja, je bila nekaj več kot 2.240.000 m². V letu 2000 je bila skupna površina stavb, za katere so bila izdana gradbena dovoljenja, za 11 % manjša kot v letu 1999, v letu 2001 pa za 3 % manjša kot v letu 2000. Od leta 2002 do leta 2007 je površina stavb, predvidenih v takrat izdanih gradbenih dovoljenjih, naraščala, in sicer je bila v letu 2002 za 4 %, v letu 2003 za 13 %, v letu 2004 za 4 % in v letu 2005 za 6 % večja kot prejšnje leto. V letu 2006 pa je bila kar za 33 % večja kot v letu 2005, in sicer je obsegala skoraj 3.363.000 m². V naslednjem letu, tj. v letu 2007 je bila skupna površina načrtovanih stavb še za 1 % večja kot v letu 2006, po letu 2007 pa se je začela močno zmanjševati: v letu 2008 je bila za 22 % manjša kot v letu 2007, v letu 2009 pa za 21 % manjša kot v letu 2008. V letu 2009 je dosegla nekoliko višjo vrednost kot v letu 2002.

FLOOR AREA OF BUILDINGS FOR WHICH BUILDING PERMITS WERE ISSUED BETWEEN 1999 AND 2009

In 11 years almost 27 mio. square metres of buildings

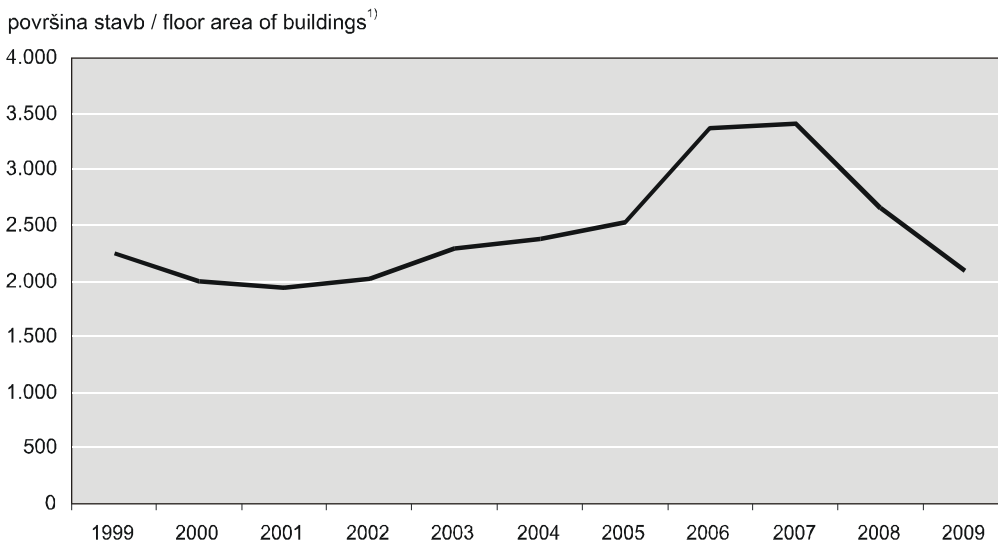
Between 1999 and 2009 building permits for buildings measuring 26,910,000 square metres were issued to natural and legal persons in Slovenia.

In 2006 and 2007 increase in the floor area of buildings for which building permits were issued

In the observed period changes in the floor area of building were similar to the trends in the number of issued building permits, except that the peak was reached in 2007 instead of 1999, which was the year when the highest number of building permits were issued. In 1999 the total floor area of buildings for which building permits were issued was over 2,240,000 square metres. Compared to the previous year, in 2000 the total floor area decreased by 11% and in 2001 by 3%. Between 2002 and 2007 the total floor area was increasing: in 2002 by 4%, in 2003 by 13%, in 2004 by 4% and in 2005 by 6% over the previous year. In 2006 a large increase of 33% was recorded; the total floor area measured almost 3,363,000 square metres. In 2007 another increase was recorded, albeit rather small (by 1%). However, after 2007 the total floor area of buildings for which building permits were issued started to decline steeply: in 2008 by 22% and in 2009 by 21% over the previous year. In 2009 the total floor area was just slightly over the 2002 value.

Grafikon 2: Površina stavb, za katere so bila izdana gradbena dovoljenja, Slovenija

Chart 2: Floor area of buildings for which building permits were issued, Slovenia



© SURS

1) 1.000 m²

Vir / Source: SURS / SORS

Tabela 3: Število izdanih gradbenih dovoljenj za stavbe in razlika v številu izdanih dovoljenj glede na prejšnje leto, investitor fizična oseba, Slovenija

Table 3: Permits issued for buildings and increase/decrease in the number of buildings over the previous year, investor natural person, Slovenia

	Stavbe skupaj Buildings total		Stanovanjske stavbe Residential buildings		Nestanovanjske stavbe Non-residential buildings	
	število number	Povečanje/zmanjšanje števila stavb glede na preteklo leto (%) increase/decrease in the Nr. of buildings compared to the previous year (%)	število number	Povečanje/zmanjšanje števila stavb glede na preteklo leto (%) increase/decrease in the Nr. of buildings compared to the previous year (%)	število number	povečanje/zmanjšanje števila stavb glede na preteklo leto (%) increase/decrease in the Nr. of buildings compared to the previous year (%)
1999	6.096		4.106		1.990	
2000	5.251	-14	3.469	-16	1.782	-10
2001	4.701	-10	3.171	-9	1.530	-14
2002	4.298	-9	2.938	-7	1.360	-11
2003	4.678	9	3.348	14	1.330	-2
2004	4.584	-2	3.412	2	1.172	-12
2005	4.931	8	3.822	12	1.109	-5
2006	5.152	4	4.086	7	1.066	-4
2007	4.504	-13	3.727	-9	777	-27
2008	4.156	-8	3.470	-7	686	-12
2009	3.660	-12	3.001	-14	659	-4

Vir / Source: SURS / SORS

GRADBENA DOVOLJENJA ZA STAVBE, IZDANA FIZIČNIM OSEBAM**Fizičnim osebam izdanih letno več kot 4.700 gradbenih dovoljenj**

Med letoma 1999 in 2009 je bilo v Sloveniji izdanih fizičnim osebam povprečno nekaj več kot 4.700 dovoljenj za gradnjo stavb na leto.

Fizičnim osebam izdanih največ gradbenih dovoljenj v 1999, v naslednjih letih pa vse manj

Fizičnim osebam je bilo v Sloveniji v opazovanem obdobju izdanih največ gradbenih dovoljenj v letu 1999, in sicer za stanovanjske in nestanovanjske stavbe skupaj skoraj 6.100. V 2000 jim jih je bilo izdanih za 14 % manj kot prejšnje leto, in sicer dovoljenj za gradnjo stanovanjskih stavb za 16 % manj, dovoljenj za gradnjo nestanovanjskih stavb pa za 10 % manj. Število fizičnim osebam izdanih gradbenih dovoljenj je upadalo tudi v letih 2001 in 2002: v 2001 jim je bilo izdanih za 10 % manj gradbenih dovoljenj kot v 2000 (za 9 % manj dovoljenj za gradnjo stanovanjskih stavb in za 14 % manj dovoljenj za gradnjo nestanovanjskih stavb); v 2002 jim je bilo izdanih za 9 % manj gradbenih dovoljenj kot v 2001 (za 7 % manj dovoljenj za gradnjo stanovanjskih stavb in za 11 % manj dovoljenj za gradnjo nestanovanjskih stavb). Od 2003 do 2006, razen v 2004, se je število fizičnim osebam izdanih gradbenih dovoljenj spet povečevalo, predvsem število dovoljenj za gradnjo stanovanjskih stavb: v 2003 jim je bilo izdanih za 9 % več vseh gradbenih dovoljenj kot v 2002 (število dovoljenj za gradnjo stanovanjskih stavb je bilo višje za 14 %, število dovoljenj za gradnjo nestanovanjskih stavb pa nižje za 2 %); v 2004 jim je bilo izdanih za 2 % več dovoljenj za gradnjo stanovanjskih stavb kot v 2003, hkrati pa za 12 % manj dovoljenj za gradnjo nestanovanjskih stavb (vseh gradbenih dovoljenj skupaj je bilo za 2 % manj kot v 2003). V 2005 je bilo fizičnim osebam izdanih za 8 % več gradbenih dovoljenj kot v 2004 (za gradnjo stanovanjskih stavb jim je bilo izdanih za 12 % več, za gradnjo nestanovanjskih pa za 5 % manj gradbenih dovoljenj kot v 2004). V 2006 je bilo povečanje števila vseh izdanih gradbenih dovoljenj glede na leto 2005 4-odstotno (za gradnjo stanovanjskih stavb je bilo izdanih za 7 % več, za gradnjo nestanovanjskih stavb pa za 4 % manj dovoljenj kot v 2005). V 2007 je bilo skupno število fizičnim osebam izdanih gradbenih dovoljenj za 13 % nižje kot v 2006 (število dovoljenj za gradnjo stanovanjskih stavb je bilo

BUILDING PERMITS ISSUED TO NATURAL PERSONS BETWEEN 1999 AND 2009**Every year on average more than 4,700 building permits issued to natural persons**

On average, between 1999 and 2009 slightly more than 4,700 building permits were issued to natural persons every year.

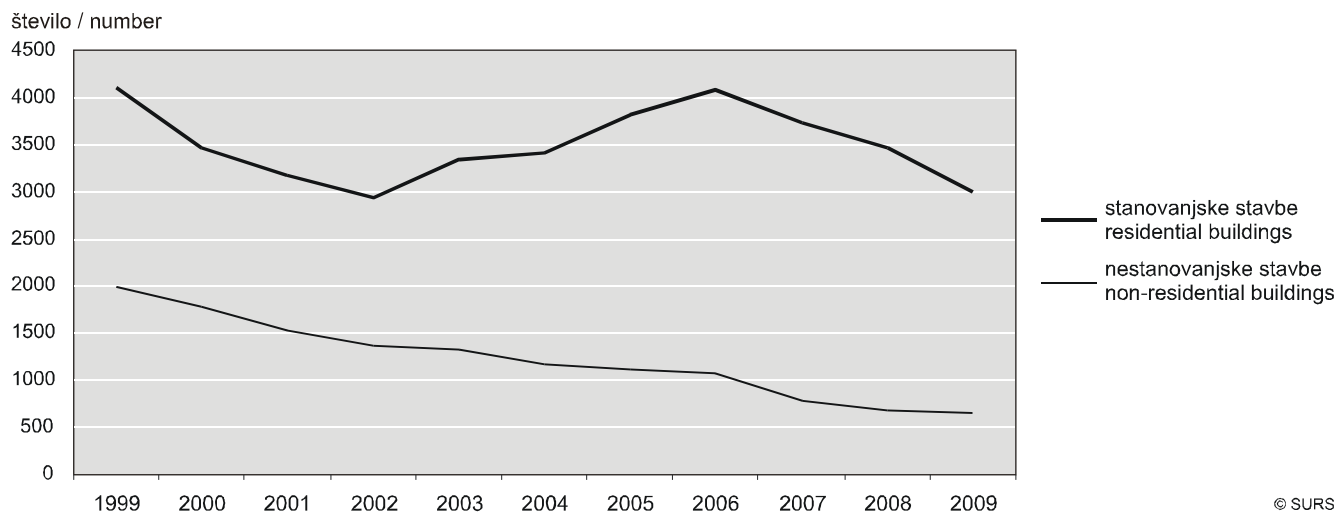
Most building permits issued to natural persons in 1999; in recent years the number has been decreasing

In the observed period most building permits in Slovenia were issued to natural persons in 1999 (almost 6,100 both for residential and non-residential buildings). In 2000 the number decreased by 14%: for residential buildings by 16% and for non-residential buildings by 10%. In 2001 and 2002 the number of building permits continued to fall: compared to the previous year, in 2001 by 9% for residential buildings and by 14% for non-residential buildings (in total by 10%) and in 2002 by 7% for residential buildings and by 11% for non-residential buildings (in total by 9%). From 2003 to 2006, except in 2004, the number of building permits increased, especially the number of building permits issued for residential buildings. Compared to the previous year, in 2003 the number of building permits issued to natural persons for residential buildings increased by 14%, while for non-residential buildings it decreased by 2% (the total increase was 9%). In 2004 the number of building permits for residential buildings increased by 2%, while for non-residential buildings it decreased by 12% (the total decrease was 2%). In 2005 the number of building permits for residential buildings increased by 7%, while for non-residential buildings it decreased by 5% (the total increase was 8%). In 2006 the number of building permits for residential buildings increased by 7%, while for non-residential buildings it decreased by 4% (the total increase was 4%). In 2007 the number of building permits for residential buildings decreased by 9% and for non-residential buildings by as much as 27% (the total decrease was 13%). In 2008 the number of building permits for residential buildings decreased by 7% and for non-residential buildings by 12% (the total decrease was 8%). Another decrease, this time by 12%, was recorded in 2009: the number of building permits for residential buildings decreased by 14% and for non-residential buildings by 4%.



nižje za 9 %, število dovoljenj za gradnjo nestanovanjskih stavb pa za 27 %). V 2008 je bilo fizičnim osebam izdanih za 8 % manj gradbenih dovoljenj kot v 2007, in sicer za gradnjo stanovanjskih stavb za 7 % manj, za gradnjo nestanovanjskih stavb pa za 12 % manj. V 2009 je bilo fizičnim osebam izdanih za 12 % manj gradbenih dovoljenj kot v 2008. 12-odstotno zmanjšanje je sledilo tudi v letu 2009 (za gradnjo stanovanjskih stavb za 14 % manj, za gradnjo nestanovanjskih stavb pa za 4 % manj).

Grafikon 3: Stavbe, za katere so bila izdana gradbena dovoljenja, investitor fizična oseba, Slovenija
Chart 3: Buildings for which building permits were issued, investor natural person, Slovenia



Vir / Source: SURS / SORS

Tabela 4: Število izdanih gradbenih dovoljenj za stavbe in razlika v številu izdanih dovoljenj glede na prejšnje leto, investitor pravna oseba, Slovenija

Table 4: Permits issued for buildings and increase/decrease in the number of buildings over the previous year, investor legal person, Slovenia

	Stavbe skupaj Buildings total		Stanovanjske stavbe Residential buildings		Nestanovanjske stavbe Non-residential buildings	
	število number	povečanje/zmanjšanje števila stavb glede na preteklo leto (%) increase/decrease in the Nr. of buildings compared to the previous year (%)	število number	povečanje/zmanjšanje števila stavb glede na preteklo leto (%) increase/decrease in the Nr. of buildings compared to the previous year (%)	število number	povečanje/zmanjšanje števila stavb glede na preteklo leto (%) increase/decrease in the Nr. of buildings compared to the previous year (%)
1999	819		163		656	
2000	849	4	181	11	668	2
2001	866	2	197	9	669	0
2002	951	10	290	47	661	-1
2003	982	3	295	2	687	4
2004	956	-3	339	15	617	-10
2005	907	-5	353	4	554	-10
2006	1.224	35	557	58	667	20
2007	1.357	11	813	46	544	-18
2008	1.217	-10	715	-12	502	-8
2009	910	-25	533	-25	377	-25

Vir / Source: SURS / SORS

GRADBENA DOVOLJENJA ZA STAVBE, IZDANA PRAVNIM OSEBAM**Pravnim osebam izdanih letno več kot 1.000 gradbenih dovoljenj**

Pravnim osebam je bilo v Sloveniji med letoma 1999 in 2009 izdanih povprečno nekaj več kot 1.000 gradbenih dovoljenj na leto.

Pravnim osebam izdanih največ gradbenih dovoljenj v 2007

V obdobju 1999–2009 je bilo v Sloveniji izdanih pravnim osebam največ gradbenih dovoljenj v letu 2007, in sicer nekaj več kot 1.350 dovoljenj. V letu 2000 je bilo pravnim osebam izdanih za 4 % več gradbenih dovoljenj kot v 1999: za stanovanjske stavbe za 11 % več, za nestanovanjske stavbe pa za 2 % več. Leta 2001 je bilo pravnim osebam izdanih za 2 % več gradbenih dovoljenj kot leta 2000: število izdanih dovoljenj za gradnjo stanovanjskih stavb je bilo višje za 9 %, število dovoljenj za gradnjo nestanovanjskih stavb pa je bilo enako kot prejšnje leto. V 2002 je bilo izdanih za 10 % več gradbenih dovoljenj kot v 2001; za gradnjo stanovanjskih stavb je bilo izdanih kar za 47 % več, za gradnjo nestanovanjskih stavb pa za 1 % manj kot v 2001. Leta 2003 je bilo izdanih za 3 % več gradbenih dovoljenj kot v 2002: za gradnjo stanovanjskih stavb za 2 % več, za gradnjo nestanovanjskih stavb pa za 4 % več. Leta 2004 je bilo pravnim osebam izdanih za 3 % manj gradbenih dovoljenj kot prejšnje leto: število izdanih dovoljenj za gradnjo stanovanjskih stavb je bilo sicer za 15 % višje kot prejšnje leto, število izdanih dovoljenj za gradnjo nestanovanjskih stavb pa je bilo za 10 % nižje. V 2005 je bilo izdanih za 5 % manj gradbenih dovoljenj kot v 2004: za gradnjo stanovanjskih stavb je bilo sicer izdanih za 5 % več gradbenih dovoljenj kot v 2004, dovoljenj za gradnjo nestanovanjskih stavb pa je bilo znova izdanih manj kot leto prej, in to za 10 %. V letih 2006 in 2007 je bilo spet izdanih občutno več gradbenih dovoljenj kot prejšnje leto, in sicer za obe vrsti stavb: v 2006 je bilo izdanih za 35 % več gradbenih dovoljenj kot v 2005 (za stanovanjske stavbe za 58 % več, za nestanovanjske stavbe pa za 20 % več); v 2007 je bilo izdanih za 11 % več gradbenih dovoljenj kot v 2006 (za stanovanjske stavbe za 46 % več, za nestanovanjske stavbe pa za 18 % manj). V letu 2008 je število pravnim osebam izdanih gradbenih dovoljenj glede na prejšnje leto upadlo za 10 % (za stanovanjske stavbe je bilo nižje za 12 %, za nestanovanjske stavbe pa za 8 %). V 2009 je bilo zmanjšanje števila pravnim osebam izdanih gradbenih dovoljenj v primerjavi z letom 2008 25-odstotno; tokrat se je število izdanih gradbenih dovoljenj za stanovanjske in za nestanovanjske stavbe zmanjšalo za enak odstotek, in sicer za 25 %.

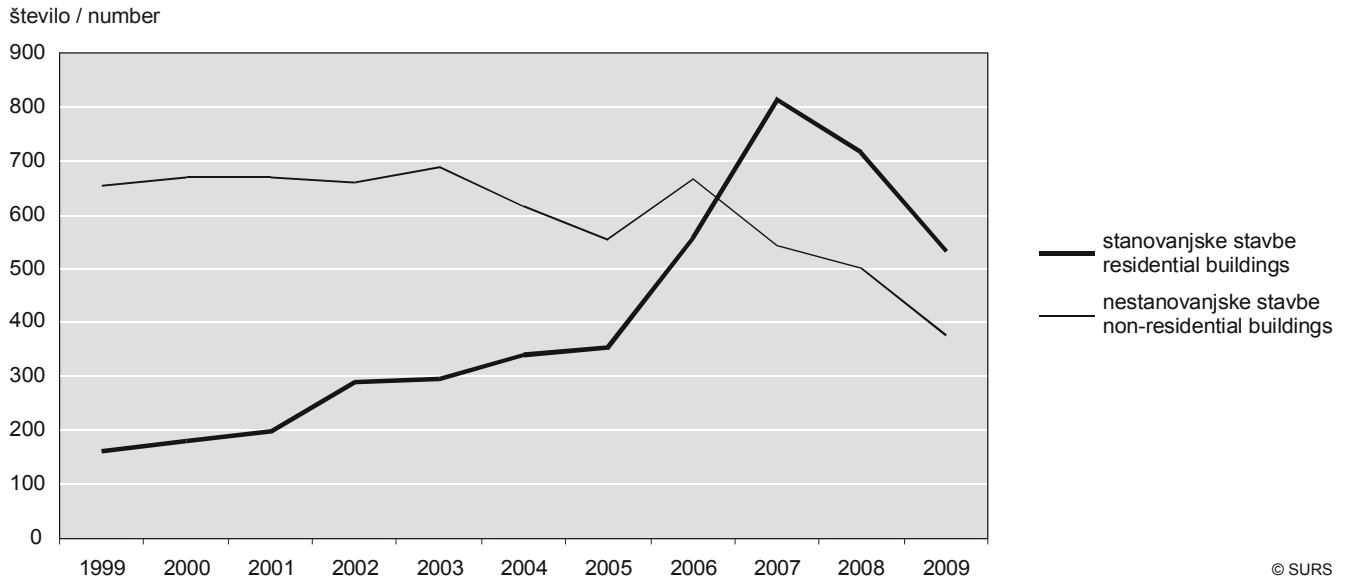
BUILDING PERMITS ISSUED TO LEGAL PERSONS BETWEEN 1999 AND 2009**Every year over 1,000 building permits issued to legal persons**

On average, between 1999 and 2009 slightly more than 1,000 building permits were issued to legal persons every year.

Most building permits issued to legal persons in 2007

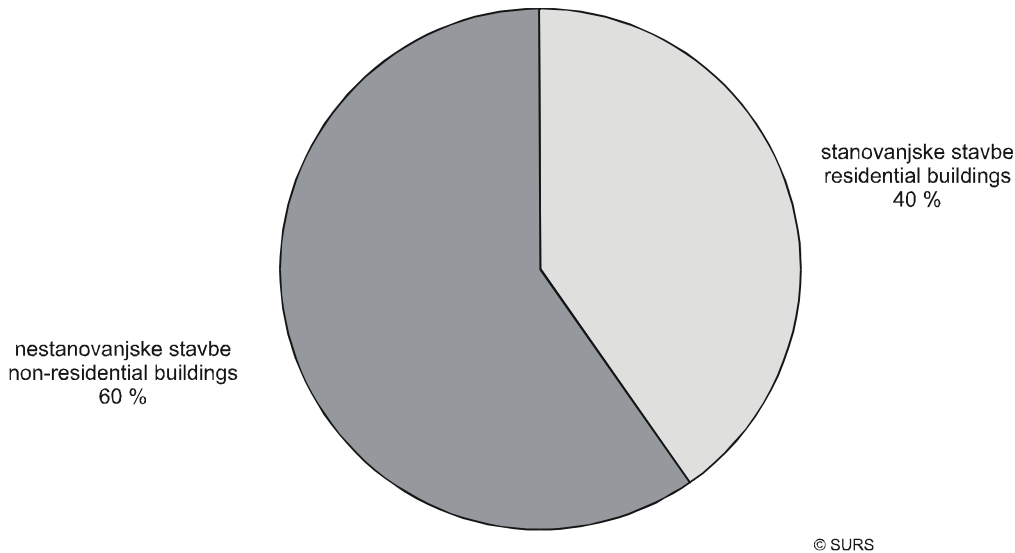
In the observed period most building permits in Slovenia were issued to legal persons in 2007 (just over 1,350). In 2000 the number increased by 4%: for residential building by 11% and for non-residential buildings by 2%. In 2001 the number of building permits for residential buildings increased by 9%, while for non-residential buildings it remained the same as a year before (the total increase was 2%). In 2002 the number of building permits for residential buildings increased by as much as 47%, while for non-residential buildings it decreased by 1% (the total increase was 10%). In 2003 the number of building permits for residential buildings increased by 2% and for non-residential buildings by 4% (the total increase was 3%). In 2004 the number of building permits for residential buildings increased by 15%, while for non-residential buildings it decreased by 10% (the total decrease was 3%). As in 2004, in 2005 too a slight decrease (by 5%) in the total number of building permits issued to legal persons was observed: the number of permits for residential buildings increased by 5%, while for non-residential buildings it again decreased by 10%. In 2006 and 2007 a large increase in the number of building permits for both residential and non-residential buildings was recorded. Compared to the previous year, in 2006 35% more building permits were issued: 58% more for residential buildings and 20% more for non-residential buildings. In 2007 the total number of building permits increased by 11%: for residential buildings it increased by 46%, while for non-residential buildings it decreased by 18%. In 2008 a 10% drop was recorded: for residential buildings by 12% and for non-residential building by 8%. Another drop, this time by 25%, was observed in 2009: both for residential and non-residential buildings the number of building permits decreased by 25%.

Grafikon 4: Stanovanjske in nestanovanjske stavbe, za katere so bila izdana gradbena dovoljenja, investitor pravna oseba, Slovenija
Chart 4: Residential and non-residential buildings for which building permits were issued, investor legal person, Slovenia



Vir / Source: SURS / SORS

Grafikon 5: Povprečni delež izdanih dovoljenj za gradnjo stanovanjskih in nestanovanjskih stavb, investitor pravna oseba, Slovenija, 1999–2009
Chart 5: Average share of residential and non-residential buildings for which building permits were issued, investor legal person, Slovenia, 1999-2009



Vir / Source: SURS / SORS

DOVOLJENJA ZA GRADNJO STANOVANJSKIH IN NESTANOVANJSKIH STAVB, IZDANA PRAVNIM OSEBAM

Pravnim osebam izdanih več kot 11.000 dovoljenj za gradnjo stavb

Delež pravnim osebam izdanih dovoljenj za gradnjo nestanovanjskih stavb v obdobju 1999–2009 je bil višji od deleža izdanih dovoljenj za gradnjo stanovanjskih stavb.

Delež v letih 1999–2006 pravnim osebam izdanih dovoljenj za gradnjo

BUILDING PERMITS ISSUED TO LEGAL PERSONS FOR RESIDENTIAL AND NON-RESIDENTIAL BUILDINGS BETWEEN 1999 AND 2009

In total, 11,000 building permits issued to legal persons

Between 1999 and 2009 the share of building permits issued to legal persons for non-residential buildings was higher than the share of building permits issued to legal persons for residential buildings.

The share of building permits issued to legal persons in 1999-2006

nestanovanjskih stavb višji od deleža dovoljenj za gradnjo stanovanjskih stavb, delež po letu 2006 izdanih gradbenih dovoljenj pa nižji

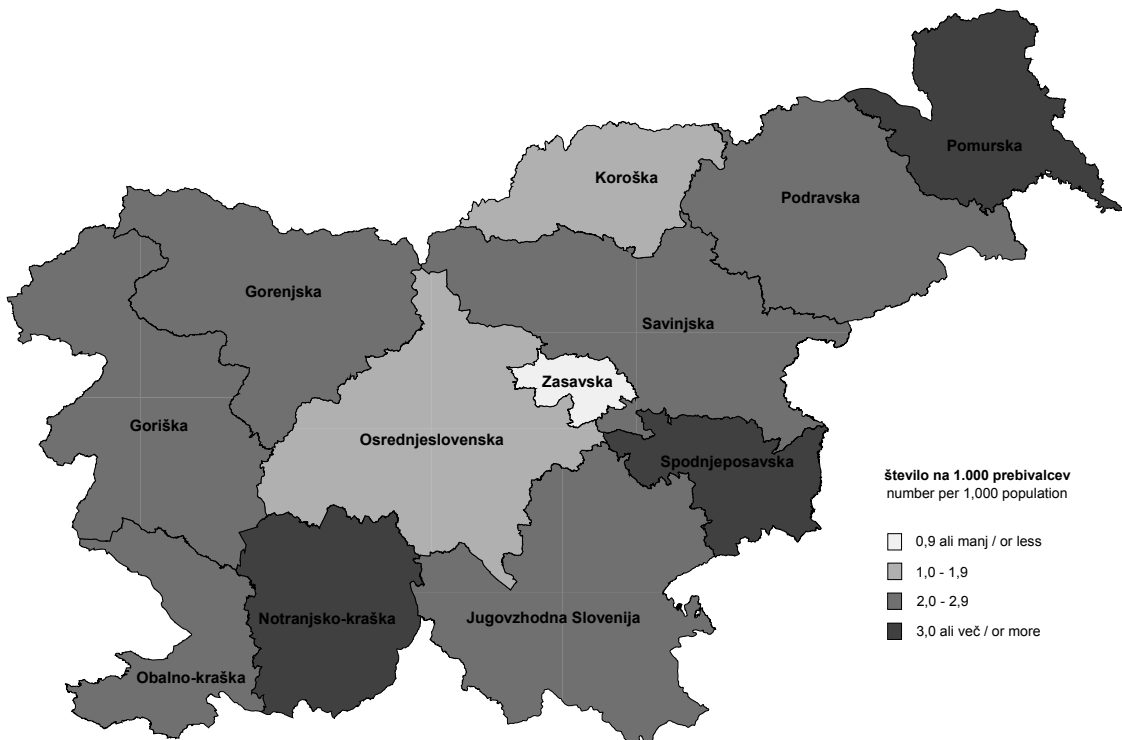
V Sloveniji je bilo med leti 1999 in 2009 izdanih pravnim osebam skupno nekaj več kot 11.000 dovoljenj za gradnjo stavb; za gradnjo stanovanjskih stavb je bilo pravnim osebam skupno izdanih nekaj več kot 4.400 dovoljenj, za gradnjo nestanovanjskih stavb pa nekaj več kot 6.600 dovoljenj. Povprečni skupni delež pravnim osebam izdanih gradbenih dovoljenj je bil za gradnjo nestanovanjskih stavb 60-odstoten, za gradnjo stanovanjskih stavb pa 40-odstoten. Delež pravnim osebam izdanih dovoljenj za gradnjo nestanovanjskih stavb je bil od leta 1999 do leta 2006 višji od deleža dovoljenj za gradnjo stanovanjskih stavb za od skoraj 20 odstotnih točk v letu 2006 do 302 odstotni točki v letu 2000. Delež izdanih dovoljenj za gradnjo nestanovanjskih stavb v primerjavi z deležem izdanih dovoljenj za gradnjo stanovanjskih stavb je bil v letu 2007 nižji za 33 odstotnih točk, v letu 2008 za 30 odstotnih točk in v letu 2009 za 29 odstotnih točk.

for non-residential buildings higher than the share of building permits issued to legal persons for residential buildings

In the observed period slightly more than 11,000 building permits were issued to legal persons in Slovenia; slightly more than 4,400 building permits were issued for residential buildings and slightly more than 6,600 for non-residential buildings. The average total share of building permits issued to legal persons was 60% for non-residential buildings and 40% for residential buildings. From 1999 to 2006 the share of building permits issued for non-residential buildings was higher than the share of building permits issued for residential buildings by almost 20 percentage points in 2006 and by as much as 302 percentage points in 2000. Compared to the shares of building permits issued to legal persons for residential buildings, the shares of building permits for non-residential buildings were lower by 33 percentage points in 2007, by 30 percentage points in 2008 and by 29 percentage points in 2009.

Karta 1: Izdana gradbena dovoljenja na 1.000 prebivalcev, statistične regije, Slovenija, 2009

Map 1: Building permits issued per 1,000 population, statistical regions, Slovenia, 2009



Vira: SURS, GURS
Sources: SORS, SMA

©SURS

ŠTEVILO V LETU 2009 IZDANIH DOVOLJENJ ZA GRADNJO STAVB NA 1.000 PREBIVALCEV PO STATISTIČNIH REGIJAH

Približno 2 gradbeni dovoljenji na 1.000 prebivalcev

V letu 2009 sta bili v statističnih regijah izdani povprečno 2 (2,2) gradbeni dovoljenji na 1.000 prebivalcev.

BUILDING PERMITS ISSUED PER 1,000 POPULATION BY STATISTICAL REGIONS OF SLOVENIA IN 2009

More than 2 permits per 1,000 population

On average in a statistical region of Slovenia 2.2 building permits were issued per 1,000 population.



Prva spodnjeposavska, zadnja zasavska statistična regija

Največ gradbenih dovoljenj na 1.000 prebivalcev je bilo izdanih v spodnjeposavski statistični regiji, 3,7. V notranjsko-kraški statistični regiji je bilo skupno izdanih 3,3, v pomurski statistični regiji pa 3,0 gradbena dovoljenja na 1.000 prebivalcev. V goriški statistični regiji je bilo izdanih 2,8 gradbenega dovoljenja na 1.000 prebivalcev. V gorenjski statistični regiji in regiji jugovzhodna Slovenija je bilo izdanih 2,4 gradbenega dovoljenja na 1.000 prebivalcev. V podravski, obalno-kraški in savinjski statistični regiji je bilo izdanih povprečno 2,2 gradbenega dovoljenja na 1.000 prebivalcev, v koroški in osrednjeslovenski statistični regiji pa je bilo povprečno izdanih 1,8 gradbenega dovoljenja na 1.000 prebivalcev. Najmanj dovoljenj je bilo izdanih v zasavski statistični regiji, povprečno le 0,8 na 1.000 prebivalcev.

Spodnjeposavska statistical region first, Zasavska last

As regards statistical regions, in the observed period most building permits were issued in the Spodnjeposavska statistical region, 3.7 per 1,000 population. In the Notranjsko-Kraška statistical region 3.3 permits per 1,000 population were issued and in the Pomurska region 3.0 per 1,000 population. In the Goriška statistical region 2.8 permits were issued per 1,000 population, and in Gorenjska and Jugovzhodna Slovenija 2.4 per 1,000 population. In Podravska, Obalno-Kraška and Savinjska statistical regions on average 2.2 permits were issued per 1,000 population. In Koroška and Osrednjeslovenska statistical regions 1.8 permits per 1,000 population were issued. The fewest permits per 1,000 population were issued in the Zasavska statistical region, only 0.8.

Tabela 5: Število in površina stavb, za katere so bila izdana gradbena dovoljenja, statistične regije, Slovenija, 2009
Table 5: Number and floor area of buildings for which permits were issued, statistical regions, Slovenia, 2009

Šifra regije Region code	Statistična regija Statistical region	Število stavb Number of buildings	Površina stavb (m ²) Floor area of buildings (m ²)
SLOVENIJA/SLOVENIA		4.570	2.089.907
1	Pomurska	363	142.369
2	Podravska	724	252.361
3	Koroška	127	69.749
4	Savinjska	571	253.084
5	Zasavska	35	9.691
6	Spodnjeposavska	261	99.502
7	Jugovzhodna Slovenija	339	103.148
8	Osrednjeslovenska	906	545.754
9	Gorenjska	496	249.415
10	Notranjsko-kraška	171	66.010
11	Goriška	333	186.817
12	Obalno-kraška	244	112.007

Vir / Source: SURS / SORS

ŠTEVILO IN POVRŠINA STAVB, ZA KATERA SO BILA IZDANA GRADBENA DOVOLJENJA V LETU 2009, PO STATISTIČNIH REGIJAH

V 3 statističnih regijah izdanih skoraj 50 % vseh dovoljenj za gradnjo stavb

V Sloveniji je bilo v letu 2009 izdanih 4.570 dovoljenj za gradnjo stavb v skupni izmeri skoraj 2.090.000 m². 48 % vseh gradbenih dovoljenj je bilo izdanih v treh regijah z največjim številom izdanih dovoljenj za gradnjo stavb. Največ dovoljenj je bilo izdanih v osrednjeslovenski regiji.

Po številu izdanih gradbenih dovoljenj prva osrednjeslovenska (906 dovoljenj), zadnja zasavska statistična regija (35 dovoljenj)

Največ dovoljenj za gradnjo stavb v letu 2009 je bilo izdanih v osrednjeslovenski statistični regiji, za nekaj več kot 900 stavb v izmeri nekaj več kot 545.000 m². Po številu izdanih dovoljenj za gradnjo stavb je bila na drugem mestu podravska regija z nekaj več kot 720 dovoljenji za gradnjo stavb z nekaj več kot 252.000 m² predvidene površine. V savinjski statistični regiji pa je bilo izdanih nekaj več kot 570 dovoljenj za gradnjo stavb s predvideno skupno površino 253.000 m². Sledili sta gorenjska statistična regija s skoraj 500 izdanimi dovoljenji za gradnjo stavb s površino skoraj 249.000 m² in pomurska statistična regija z nekaj več kot 360 izdanimi gradbenimi dovoljenji v izmeri nekaj več kot 142.000 m². V statistični regiji jugovzhodna Slovenija je bilo leta 2009 izdanih skoraj 340 dovoljenj za gradnjo stavb z nekaj več kot 103.000 m², v

NUMBER AND FLOOR AREA OF BUILDINGS FOR WHICH BUILDING PERMITS WERE ISSUED IN 2009, BY STATISTICAL REGIONS OF SLOVENIA

Almost 50% of all building permits issued in three statistical regions

In 2009, 4,570 building permits were issued in Slovenia for almost 2,090,000 square metres of floor area. 48% of all building permits were issued in three statistical regions with the highest number of issued building permits. Most building permits were issued in the Osrednjeslovenska region.

Osrednjeslovenska first with 906 building permits, Zasavska last with 35 building permits

In 2009 most building permits were issued in the Osrednjeslovenska region: for just over 900 buildings measuring just over 545,000 square metres. As regards the number of issued building permits, second placed was the Podravska region with just over 720 building permits for the total floor area of 252,000 square metres. In the Savinjska region slightly more than 570 building permits were issued for buildings measuring 253,000 square metres, which is more than in the Podravska region. The next region is Gorenjska with almost 500 building permits for the total floor area of almost 249,000 square metres, followed by the Pomurska region with just over 360 building permits for the total floor area of slightly more than 142,000 square metres. In Jugovzhodna Slovenija almost 340 building permits were issued for the total floor area of over 103,000



goriški statistični regiji pa je bilo izdanih nekaj več kot 330 dovoljenj za gradnjo stavb s skupno površino skoraj 187.000 m². V spodnjeposavski statistični regiji je bilo izdanih nekaj več kot 260 dovoljenj za gradnjo stavb s skupno površino skoraj 100.000 m², v obalno-kraški statistični regiji je bilo izdanih nekaj več kot 240 dovoljenj za gradnjo stavb s skupno površino nekaj več kot 112.000 m², medtem ko je bilo v notranjsko-kraški statistični regiji v letu 2009 izdanih le nekaj več kot 170 dovoljenj za gradnjo stavb v skupni izmeri nekaj več kot 66.000 m². Najmanj dovoljenj za gradnjo stavb je bilo izdanih v koroški in zasavski statistični regiji, v koroški statistični regiji je bilo izdanih nekaj manj kot 130 dovoljenj za gradnjo stavb s skupno površino slabih 70.000 m², v zasavski statistični regiji pa je bilo izdanih le 35 dovoljenj za gradnjo stavb s skupno površino nekaj manj kot 10.000 m².

square metres and in the Goriška region 330 building permits for the total floor area of almost 187,000 square metres. In the Spodnjeposavska region slightly more than 260 building permits for the total floor area of almost 100,000 square metres were issued, in the Obalno-Kraška region more than 240 building permits for the total floor area of just over 112,000 square metres and in the Notranjsko-kraška region just over 170 building permits for the total floor area of more than 66,000 square metres. The fewest building permits were issued in the Koroška and Zasavska regions; in the former almost 130 building permits for almost 70,000 square metres and in the latter 35 building permits for almost 10,000 square metres.

Tabela 6: Število in površina stanovanj, za katera so bila izdana gradbena dovoljenja, statistične regije, Slovenija, 2009

Table 6: Number and floor area of dwellings for which permits were issued, statistical regions, Slovenia, 2009

Šifra regije Region code	Statistična regija Statistical region	Število stanovanj Number of dwellings	Površina stanovanj (m ²) Floor area of dwellings (m ²)
SLOVENIJA/SLOVENIA		5.914	736.335
1	Pomurska	282	42.571
2	Podravska	800	110.858
3	Koroška	175	18.573
4	Savinjska	916	103.685
5	Zasavska	26	4.177
6	Spodnjeposavska	184	23.282
7	Jugovzhodna Slovenija	294	39.153
8	Osrednjeslovenska	1.660	190.496
9	Gorenjska	644	93.121
10	Notranjsko-kraška	184	24.097
11	Goriška	378	45.438
12	Obalno-kraška	371	40.884

Vir / Source: SURS / SORS

ŠTEVILO IN POVRŠINA STANOVANJ, ZA KATERA SO BILA V LETU 2009 IZDANA GRADBENA DOVOLJENJA, PO STATISTIČNIH REGIJAH

V letu 2009 izdanih skoraj 6.000 dovoljenj za gradnjo stanovanj

V Sloveniji je bilo v letu 2009 izdanih nekaj več kot 5.900 dovoljenj za gradnjo stanovanj v skupni izmeri nekaj več kot 736.000 m². Skupaj je bilo v treh statističnih regijah z največjim številom izdanih dovoljenj za gradnjo stanovanj izdanih 57 % vseh gradbenih dovoljenj. Največ dovoljenj za gradnjo stanovanj je bilo izdanih v osrednjeslovenski statistični regiji.

V osrednjeslovenski statistični regiji v letu 2009 predvidena gradnja 1.660 stanovanj, v zasavski statistični regiji 26

Največ dovoljenj za gradnjo stanovanj v letu 2009 je bilo izdanih v osrednjeslovenski statistični regiji, za 1.660 stanovanj v skupni izmeri več kot 190.000 m². Po številu izdanih dovoljenj za gradnjo stavb je bila na drugem mestu savinjska statistična regija s skoraj 920 dovoljenji za gradnjo stanovanj v skupni izmeri več kot 103.000 m², medtem ko je bilo v podravske statistični regiji izdanih 800 dovoljenj za gradnjo stanovanj z večjo predvideno površino stavb kot v savinjski statistični regiji, skupno za skoraj 111.000 m². Sledili sta gorenjska statistična regija s skoraj 650 izdanimi dovoljenji za gradnjo stanovanj in skupno površino več kot 93.000 m² in goriška statistična regija s skoraj 380 izdanimi gradbenimi dovoljenji v skupni izmeri več kot 45.000 m². V obalno-kraški statistični regiji je bilo leta 2009 izdanih nekaj več kot 370 dovoljenj za gradnjo

NUMBER AND FLOOR AREA OF DWELLINGS FOR WHICH BUILDING PERMITS WERE ISSUED IN 2009, BY STATISTICAL REGIONS OF SLOVENIA

In 2009 almost 6,000 building permits for dwellings

In 2009 more than 5,900 building permits for dwellings with the total floor area of 736,000 square metres were issued in Slovenia. 57% of all building permits for dwellings were issued in three statistical regions with the highest number of issued building permits. Most building permits for dwellings were issued in the Osrednjeslovenska region.

1,660 building permits in Osrednjeslovenska, 26 in Zasavska

In 2009 most building permits for dwellings were issued in the Osrednjeslovenska region: for 1,660 dwellings measuring more than 190,000 square metres. As regards the number of issued building permits, second placed was the Savinjska region with almost 920 building permits for the total floor area of 103,000 square metres, while in the Podravska region 800 building permits were issued for dwellings measuring almost 111,000 square metres, which is more than in the Savinjska region. The next region is Gorenjska with almost 650 building permits for the total floor area of almost 93,000 square metres, followed by the Goriška region with almost 380 building permits for the total floor area of over 45,000 square metres. In the Obalno-kraška region slightly more than 370 building permits were issued for the total floor area of



stanovanj s skupno površino skoraj 41.000 m², v statistični regiji Jugovzhodna Slovenija pa je bilo izdanih skoraj 300 dovoljenj za gradnjo stanovanj s skupno površino dobrih 39.000 m². V pomurski statistični regiji je bilo izdanih nekaj več kot 280 dovoljenj za gradnjo stanovanj s skupno površino dobrih 42.000 m². V notranjsko-kraški in spodnjeposavski statistični regiji je bilo izdano enako število dovoljenj za gradnjo stanovanj, dobrih 180. V notranjsko-kraški statistični regiji so bila izdana gradbena dovoljenja za gradnjo stanovanj v skupni izmeri 24.000 m², v spodnjeposavski pa za dobrih 800 m² manj kot v notranjsko-kraški. Najmanj dovoljenj za gradnjo stanovanj je bilo izdanih v koroški in zasavski statistični regiji. V koroški statistični regiji je bilo izdanih več kot 170 dovoljenj za gradnjo stanovanj s skupno površino nekaj več kot 18.000 m², v zasavski statistični regiji pa je bilo izdanih 26 dovoljenj za gradnjo stanovanj s skupno površino malo več kot 4.000 m².

almost 41,000 square metres, in Jugovzhodna Slovenija almost 300 building permits for the total floor area of more than 39,000 square metres and in the Pomurska region slightly more than 280 building permits for the total floor area of over 42,000 square metres. In the Notranjsko-kraška and Spodnjeposavska regions the same number of building permits (184) was issued; however, the total floor area of dwellings in the Notranjsko-kraška region was 24,000 square metres and in the Spodnjeposavska region more than 800 square metres less. The fewest building permits were issued in the Koroška and Zasavska regions; in the former over 170 building permits for over 18,000 square metres and in the latter only 26 building permits for over 4,000 square metres.

Tabela 7: Povprečna površina stavb, za katere so bila izdana gradbena dovoljenja, statistične regije, Slovenija, 2009
Table 7: Average floor area of buildings for which building permits were issued, by statistical regions, Slovenia, 2009

Šifra regije/ Region code	Regija Region	Povprečna velikost stavb (m ²) Average floor area of buildings (m ²)
SLOVENIJA/SLOVENIA		457
1	Pomurska	392
2	Podravska	349
3	Koroška	549
4	Savinjska	443
5	Zasavska	277
6	Spodnjeposavska	381
7	Jugovzhodna Slovenija	304
8	Osrednjeslovenska	602
9	Gorenjska	503
10	Notranjsko-kraška	386
11	Goriška	561
12	Obalno-kraška	459

Vir / Source: SURS / SORS

POVPREČNA POVRŠINA STAVB, ZA KATERE SO BILA V LETU 2009 IZDANA GRADBENA DOVOLJENJA, PO STATISTIČNIH REGIJAH

Povprečna površina stavb meri 450 m²

Povprečna površina stavb, za katere so bila v letu 2009 izdana gradbena dovoljenja v Sloveniji, je merila več kot 450 m².

Povprečna površina načrtovanih stavb od 600 m² do 280 m²

Največje stavbe, za katere je bilo izdano gradbeno dovoljenje so se gradile v osrednjeslovenski statistični regiji, s povprečno površino nekaj več kot 600 m². V goriški statistični regiji je bila povprečna površina stavb, za katere so bila izdana gradbena dovoljenja, več kot 560 m², v koroški statistični regiji manj kot 550 m² in v gorenjski statistični regiji več kot 500 m². V obalno-kraški in savinjski statistični regiji se je povprečna površina stavb gibala nekaj čez 400 m². V obalno-kraški statistični regiji je povprečna stavba merila skoraj 460 m², v savinjski statistični regiji pa nekaj čez 440 m². V pomurski statistični regiji je povprečna stavba merila dobrih 390 m², v notranjsko-kraški manj kot 390 m², v spodnjeposavski statistični regiji pa nekaj čez 380 m². V povprečju so stavbe z najmanjšimi površinami v letu 2009 gradili v podravski statistični regiji (manj kot 350 m²), v regiji jugovzhodna Slovenija (nekaj čez 300 m²) in v zasavski statistični regiji (slabih 280 m²).

AVERAGE FLOOR AREA OF BUILDINGS FOR WHICH BUILDING PERMITS WERE ISSUED IN 2009, BY STATISTICAL REGIONS OF SLOVENIA

Average floor area of buildings 450 square metres

On average, a building for which a building permit was issued in Slovenia in 2009 measured about 450 square metres.

From 600 square metres in Osrednjeslovenska to 280 square metres in Zasavska statistical region

The largest buildings for which building permits were issued were built in the Osrednjeslovenska region, on average their floor area was over 600 square metres. In the Goriška region the average floor area of buildings for which building permits were issued was over 560 square metres, in the Koroška region almost 550 square metres and in the Gorenjska region more than 500 square metres. In the Obalno-kraška and Savinjska regions the average size of buildings was almost 460 square metres and in the Savinjska region over 440 square metres. In the Pomurska region the average size of buildings was over 390 square metres, in the Notranjsko-kraška region almost 390 square metres and in the Spodnjeposavska region over 380 square metres. On average, the smallest buildings in 2009 were built in Podravska (less than 350 square metres), Jugovzhodna Slovenija (just over 300 square metres) and Zasavska (almost 280 square metres).



Tabela 8: Povprečna površina stanovanj, za katera so bila izdana gradbena dovoljenja, statistične regije, Slovenija, 2009
Table 8: Average floor area of dwellings for which building permits were issued, statistical regions, Slovenia, 2009

Šifra regije/ Region code	Regija Region	Povprečna površina stanovanj (m ²) Average floor area of dwellings (m ²)
SLOVENIJA/SLOVENIA		125
1	Pomurska	151
2	Podravska	139
3	Koroška	106
4	Savinjska	113
5	Zasavska	161
6	Spodnjeposavska	127
7	Jugovzhodna Slovenija	133
8	Osrednjeslovenska	115
9	Gorenjska	145
10	Notranjsko-kraška	131
11	Goriška	120
12	Obalno-kraška	110

Vir / Source: SURS / SORS

POVPREČNA POVRŠINA STANOVANJ, ZA KATERA SO BILA V LETU 2009 IZDANA GRADBENA DOVOLJENJA, PO STATISTIČNIH REGIJAH

Povprečna površina stanovanja 125 m²

Povprečno stanovanje, za katero je bilo izdano gradbeno dovoljenje v Sloveniji leta 2009, je merilo 125 m².

Povprečno največja stanovanja načrtovana v zasavski statistični regiji (160 m²), povprečno najmanjša v koroški statistični regiji (105 m²)

Največja stanovanja, za katera so bila izdana gradbena dovoljenja, so se gradila v zasavski statistični regiji, in sicer so obsegala povprečno nekaj več kot 160 m². V pomurski statistični regiji je bila povprečna površina stanovanja, za katero je bilo izdano gradbeno dovoljenje, več kot 150 m², v gorenjski statistični regiji 145 m², v podravske statistični regiji pa skoraj 140 m². V statistični regiji jugovzhodna Slovenija je povprečno stanovanje, za katero je bilo v letu 2009 izdano gradbeno dovoljenje, merilo skoraj 135 m², v notranjsko-kraški statistični regiji pa nekaj čez 130 m². V spodnjeposavski statistični regiji je povprečna površina stanovanj, za katera so bila izdana gradbena dovoljenja, merila nekaj več kot 125 m², v goriški statistični regiji 120 m², v osrednjeslovenski statistični regiji pa 115 m². V savinjski statistični regiji je povprečno stanovanje, za katero je bilo v letu 2009 izdano gradbeno dovoljenje merilo manj kot 115 m², v obalno-kraški statistični regiji pa 110 m². Najmanše povprečne površine stanovanj, za katera so bila v letu 2009 izdana gradbena dovoljenja, so bile v koroški statistični regiji, 106 m².

AVERAGE FLOOR AREA OF DWELLINGS FOR WHICH BUILDING PERMITS WERE ISSUED IN 2009, BY STATISTICAL REGIONS OF SLOVENIA

Average floor area of dwellings 125 square metres

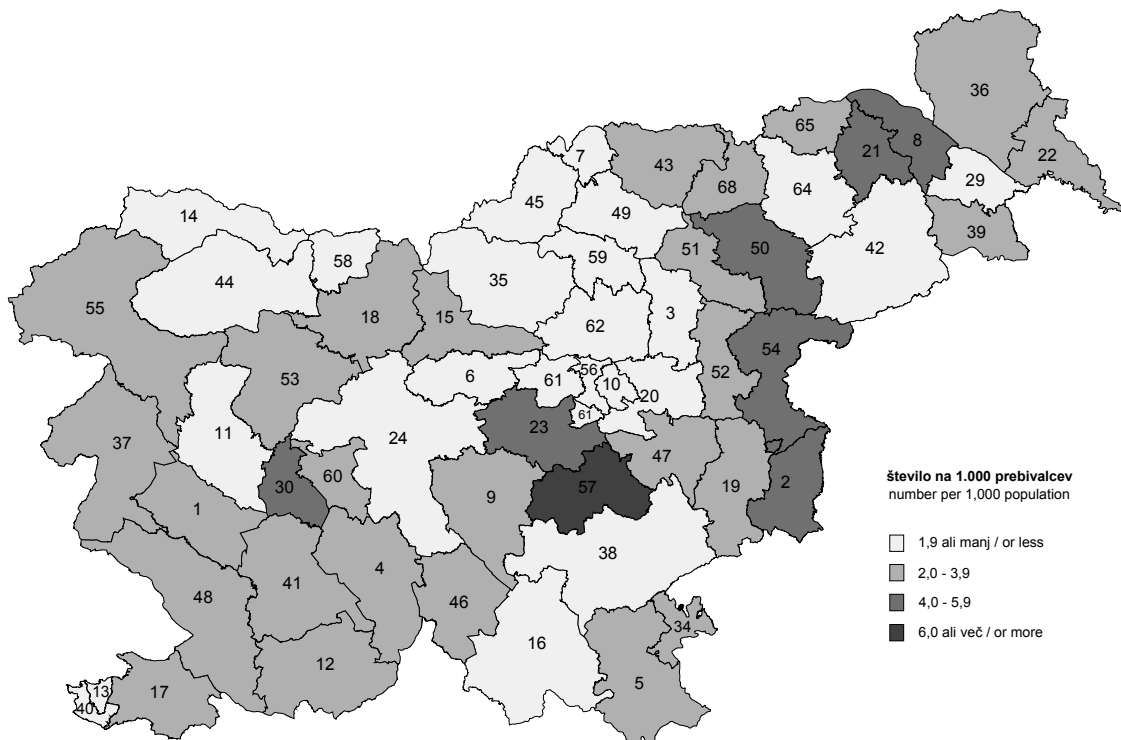
On average, a dwelling for which a building permit was issued in Slovenia in 2009 measured about 125 square metres.

The largest dwellings in Zasavska (160 square metres), the smallest in Koroška (105 square metres)

The largest dwellings for which building permits were issued were built in the Zasavska region, on average their floor area was over 160 square metres. In the Pomurska region the average floor area of dwellings for which building permits were issued was over 150 square metres, in the Gorenjska region 145 square metres and in the Podravska region almost 140 square metres. In Jugovzhodna Slovenija the average size of dwellings for which building permits were issued in 2009 was almost 135 square metres and in the Notranjsko-kraška region just over 130 square metres. In the Spodnjeposavska region the average size of dwellings was over 125 square metres, in the Goriška region 120 square metres and in the Osrednjeslovenska region 115 square metres. In the Savinjska region the average dwelling measured almost 115 square metres and in the Obalno-kraška region 110 square metres. On average, the smallest dwellings in 2009 were built in the Koroška region, only just over 105 square metres.



Karta 2: Izdana gradbena dovoljenja na 1.000 prebivalcev, upravne enote, Slovenija, 2009
Map 2: Building permits issued per 1,000 population, administrative units, Slovenia, 2009



Vira: SURS, GURS
Sources: SORS, SMA

©SURS

ŠTEVILO V LETU 2009 IZDANIH DOVOLJENJ ZA GRADNJO STAVB NA 1.000 PREBIVALCEV PO UPRAVNIH ENOTAH

Povprečno 2 gradbeni dovoljenja na 1.000 prebivalcev na upravno enoto

V letu 2009 sta bili v upravnih enotah izdani povprečno 2 (2,2) gradbeni dovoljenja na 1.000 prebivalcev.

Od 6,2 do 0,6 gradbenega dovoljenja na 1.000 prebivalcev v upravnih enotah

Največ gradbenih dovoljenj na 1.000 prebivalcev je bilo izdanih v upravni enoti Trebnje, 6,2, in v upravni enoti Gornja Radgona, 5,2. V upravnih enotah Litija, Brežice, Šmarje pri Jelšah, Slovenska Bistrica, Logatec, Lenart, Pesnica in Škofja Loka je bilo izdanih od 4,0 do 4,9 gradbenega dovoljenja na 1.000 prebivalcev, v upravnih enotah Ajdovščina, Lendava/Lendva, Postojna, Grosuplje, Sežana, Slovenske Konjice, Šentjur pri Celju, Sevnica, Krško, Vrhnika, Kamnik in Ormož pa od 3,0 do 3,9. Od 2,0 do 2,9 gradbenega dovoljenja na 1.000 prebivalcev je bilo izdanih v upravnih enotah Ilirska Bistrica, Cerknica, Metlika, Nova Gorica, Ribnica, Radlje ob Dravi, Tolmin, Kranj, Ruše, Črnomelj, Koper/Capodistria, Murska Sobota, Dravograd, Velenje in Žalec, od 1,0 do 1,9 pa v upravnih enotah Jesenice, Ljutomer, Kočevje, Maribor, Idrija, Slovenj Gradec, Radovljica, Laško, Ravne na Koroškem, Izola/Isola, Ptuj, Tržič, Novo mesto, Mozirje, Ljubljana, Piran/Pirano, Domžale, Celje in Zagorje ob Savi. Najmanj gradbenih dovoljenj na 1.000 prebivalcev je bilo izdanih v upravnih enotah Hrastnik (0,8) in Trbovlje (0,6).

NUMBER OF BUILDING PERMITS ISSUED PER 1,000 POPULATION BY ADMINISTRATIVE UNITS OF SLOVENIA IN 2009

On average two building permits per 1,000 population per administrative unit

In 2009 on average 2.2 building permits were issued per 1,000 population in administrative units of Slovenia.

From 6.2 building permits per 1,000 population in Trebnje to 0.6 building permits per 1,000 population in Trbovlje

As regards administrative units, in the observed period most building permits per 1,000 population were issued in Trebnje (6.2) and Gornja Radgona (5.2). In administrative units Litija, Brežice, Šmarje pri Jelšah, Slovenska Bistrica, Logatec, Lenart, Pesnica and Škofja Loka between 4.0 and 4.9 permits were issued per 1,000 population and in administrative units Ajdovščina, Lendava/Lendva, Postojna, Grosuplje, Sežana, Slovenske Konjice, Šentjur pri Celju, Sevnica, Krško, Vrhnika, Kamnik and Ormož between 3.0 and 3.9 permits per 1,000 population were issued. Between 2.0 and 2.9 building permits per 1,000 population were issued in Ilirska Bistrica, Cerknica, Metlika, Nova Gorica, Ribnica, Radlje ob Dravi, Tolmin, Kranj, Ruše, Črnomelj, Koper/Capodistria, Murska Sobota, Dravograd, Velenje and Žalec and only between 1.0 and 1.9 in Jesenice, Ljutomer, Kočevje, Maribor, Idrija, Slovenj Gradec, Radovljica, Laško, Ravne na Koroškem, Izola/Isola, Ptuj, Tržič, Novo mesto, Mozirje, Ljubljana, Piran/Pirano, Domžale, Celje and Zagorje ob Savi. The fewest permits per 1,000 population were issued in Hrastnik (0.8) and Trbovlje (only 0.6).



Tabela 9: Število in površina stavb, za katere so bila izdana gradbena dovoljenja, investitor skupaj, Slovenija, 1999–2009
Table 9: Number and floor area of buildings for which building permits were issued, investor total, Slovenia, 1999-2009

	Število stavb Number of buildings	Površina stavb (1.000 m ²) Floor area (1.000 m ²)	
1 STAVBE	63.049	26.910,2	1 BUILDINGS
11 STANOVANJSKE STAVBE	42.986	13.997,6	11 RESIDENTIAL BUILDINGS
111 Enostanovanjske stavbe	37.544	8.714,0	111 One-dwelling buildings
1110 Enostanovanjske stavbe	37.544	8.714,0	1110 One-dwelling buildings
112 Večstanovanjske stavbe	5.283	4.830,3	112 Two- and more dwelling buildings
1121 Dvostanovanjske stavbe	3.391	1.098,1	1121 Two-dwelling buildings
1122 Tri- in večstanovanjske stavbe	1.892	3.732,2	1122 Three- and more dwelling buildings
113 Stanovanjske stavbe za posebne namene	159	453,3	113 Residences for communities
1130 Stanovanjske stavbe za posebne namene	159	453,3	1130 Residences for communities
12 NESTANOVANJSKE STAVBE	20.063	12.912,6	12 NON-RESIDENTIAL BUILDINGS
121 Gostinske stavbe	1.668	1.214,8	121 Hotels and similar buildings
1211 Hotelske in podobne gostinske stavbe	1.152	984,1	1211 Hotel buildings
1212 Druge gostinske stavbe za kratkotrajno nastanitev	516	230,7	1212 Other short-stay accommodation buildings
122 Upravne in pisarniške stavbe	2.168	1.635,7	122 Office buildings
1220 Upravne in pisarniške stavbe	2.168	1.635,7	1220 Office buildings
123 Trgovske in druge stavbe za storitvene dejavnosti	2.619	2.608,3	123 Wholesale and retail trade buildings
1230 Trgovske in druge stavbe za storitvene dejavnosti	2.619	2.608,3	1230 Wholesale and retail trade buildings
124 Stavbe za promet in stavbe za izvajanje elektronskih komunikacij	1.881	759,9	124 Traffic and communications buildings
1241 Postaje, terminali, stavbe za izvajanje elektronskih komunikacij ter z njimi	67	30,5	1241 Communication buildings, stations, terminals and associated buildings
1242 Garažne stavbe	1.814	729,4	1242 Garage buildings
125 Industrijske stavbe in skladišča	3.542	3.537,4	125 Industrial buildings and warehouses
1251 Industrijske stavbe	2.520	2.480,4	1251 Industrial buildings
1252 Rezervoarji, silosi in skladišča	1.022	1.057,0	1252 Reservoirs, silos and warehouses
126 Stavbe splošnega družbenega pomena	1.018	1.295,9	126 Buildings for public entertainment, education or hospital and institutional care
1261 Stavbe za kulturo in razvedrilo	176	157,8	1261 Buildings for public entertainment
1262 Muzeji in knjižnice	71	89,6	1262 Museums and libraries
1263 Stavbe za izobraževanje in znanstvenoraziskovalno delo	371	531,2	1263 School, university and research buildings
1264 Stavbe za zdravstvo	234	278,8	1264 Hospital and institutional care buildings
1265 Športne dvorane	166	238,4	1265 Sports halls
127 Druge nestanovanjske stavbe	7.167	1.860,6	127 Other non-residential buildings
1271 Nestanovanjske kmetijske stavbe	5.876	1.417,1	1271 Non-residential farm buildings
1272 Stavbe za opravljanje verskih obredov, pokopališke stavbe	183	43,2	1272 Buildings used as places of worship and for religious activities
1273 Kulturni spomeniki	23	10,9	1273 Historic or protected monuments
1274 Druge nestanovanjske stavbe, ki niso uvrščene drugje	1.085	389,4	1274 Other non-residential buildings n.e.c.

Vir / Source: SURS / SORS

ŠTEVILO IN POVRŠINA STAVB, ZA KATERE SO BILA IZDANA GRADBENA DOVOLJENJA, PO ENOTNI KLASIFIKACIJI VRST OBJEKTOV (CC-SI), INVESTITOR SKUPAJ

Več kot 37.000 gradbenih dovoljenj za gradnjo enostanovanjskih stavb

Največ gradbenih dovoljenj je bilo izdanih za gradnjo enostanovanjskih stavb, skupaj več kot 37.500 s skupno površino skoraj 8.714.000 m². Za gradnjo nestanovanjskih kmetijskih stavb s skupno površino nekaj čez 1.417.000 m² je bilo skupno izdanih skoraj 5.900 gradbenih dovoljenj, za gradnjo dvostanovanjskih stavb s skupno površino 1.098.000 m² pa skoraj 3.400 gradbenih dovoljenj.

NUMBER AND FLOOR AREA OF BUILDINGS FOR WHICH BUILDING PERMITS WERE ISSUED IN THE 1999-2009 PERIOD IN SLOVENIA, BY CLASSIFICATION OF TYPES OF CONSTRUCTIONS (CC-SI), INVESTOR TOTAL

More than 37,000 building permits for one-dwelling buildings

Most building permits were issued for one-dwelling buildings; all together for 37,500 buildings measuring almost 8,714,000 square metres. As regards the number of issued building permits for non-residential farm buildings, almost 5,900 building permits were issued for the total floor area of just over 1,417,000 square metres, while for two-dwelling building almost 3,400 building permits were issued for buildings measuring almost 1,098,000 square metres.



23 gradbenih dovoljenj za gradnjo kulturnih spomenikov

V obdobju 1999–2009 je bilo 23 gradbenih dovoljenj izdanih za gradnjo kulturnih spomenikov s skupno površino skoraj 11.000 m². 71 gradbenih dovoljenj je bilo izdanih za gradnjo muzejev in knjižnic s skupno površino slabih 90.000 m², 67 gradbenih dovoljenj pa za gradnjo postaj, terminalov in stavb za izvajanje elektronskih komunikacij ter z njimi povezanih stavb, s skupno površino nekaj več kot 30.000 m².

23 building permits for historic or protected monuments

In the 1999–2009 period the fewest building permits were issued for historic or protected monuments (23), for the total floor area of almost 11,000 square metres. For museums and libraries 71 building permits were issued for the total floor area of almost 90,000 square metres and for communication buildings, stations, terminals and associated buildings 67 building permits for the total floor area slightly more than 30,000 square metres.

Tabela 10: Število in površina stavb, za katere so bila izdana gradbena dovoljenja, investitor fizična oseba, Slovenija, 1999–2009
Table 10: Number and floor area of buildings for which building permits were issued, investor natural person, Slovenia, 1999–2009

	Število stavb Number of buildings	Površina stavb (1.000 m ²) Floor area (1.000 m ²)	
1 STAVBE	52.011	13.002,5	1 BUILDINGS
11 STANOVANJSKE STAVBE	38.550	9.470,8	11 RESIDENTIAL BUILDINGS
111 Enostanovanjske stavbe	35.197	8.171,6	111 One-dwelling buildings
1110 Enostanovanjske stavbe	35.197	8.171,6	1110 One-dwelling buildings
112 Večstanovanjske stavbe	3.324	1.275,0	112 Two- and more dwelling buildings
1121 Dvostanovanjske stavbe	2.799	893,3	1121 Two-dwelling buildings
1122 Tri- in večstanovanjske stavbe	525	381,7	1122 Three- and more dwelling buildings
113 Stanovanjske stavbe za posebne namene	29	24,1	113 Residences for communities
1130 Stanovanjske stavbe za posebne namene	29	24,1	1130 Residences for communities
12 NESTANOVANJSKE STAVBE	13.461	3.531,7	12 NON-RESIDENTIAL BUILDINGS
121 Gostinske stavbe	1.122	401,5	121 Hotels and similar buildings
1211 Hotelske in podobne gostinske stavbe	748	264,1	1211 Hotel buildings
1212 Druge gostinske stavbe za kratkotrajno nastanitev	374	137,4	1212 Other short-stay accommodation buildings
122 Upravne in pisarniške stavbe	1.108	339,1	122 Office buildings
1220 Upravne in pisarniške stavbe	1.108	339,1	1220 Office buildings
123 Trgovske in druge stavbe za storitvene dejavnosti	1.386	445,4	123 Wholesale and retail trade buildings
1230 Trgovske in druge stavbe za storitvene dejavnosti	1.386	445,4	1230 Wholesale and retail trade buildings
124 Stavbe za promet in stavbe za izvajanje elektronskih komunikacij	1.592	177,5	124 Traffic and communications buildings
1241 Postaje, terminali, stavbe za izvajanje elektronskih komunikacij ter z njimi	10	5,0	1241 Communication buildings, stations, terminals and associated buildings
1242 Garažne stavbe	1.582	172,5	1242 Garage buildings
125 Industrijske stavbe in skladišča	1.570	701,1	125 Industrial buildings and warehouses
1251 Industrijske stavbe	1.164	537,6	1251 Industrial buildings
1252 Rezervoarji, silosi in skladišča	406	163,5	1252 Reservoirs, silos and warehouses
126 Stavbe splošnega družbenega pomena	161	66,1	126 Buildings for public entertainment, education or hospital and institutional care
1261 Stavbe za kulturo in razvedrilo	41	18,1	1261 Buildings for public entertainment
1262 Muzeji in knjižnice	4	1,6	1262 Museums and libraries
1263 Stavbe za izobraževanje in znanstvenoraziskovalno delo	11	12,1	1263 School, university and research buildings
1264 Stavbe za zdravstvo	81	16,2	1264 Hospital and institutional care buildings
1265 Športne dvorane	24	18,1	1265 Sports halls
127 Druge nestanovanjske stavbe	6.522	1401,1	127 Other non-residential buildings
1271 Nestanovanjske kmetijske stavbe	5.783	1261,7	1271 Non-residential farm buildings
1272 Stavbe za opravljanje verskih obredov, pokopališke stavbe	22	3,9	1272 Buildings used as places of worship and for religious activities
1273 Kulturni spomeniki	9	0,8	1273 Historic or protected monuments
1274 Druge nestanovanjske stavbe, ki niso uvrščene drugje	708	134,7	1274 Other non-residential buildings n.e.c.

Vir / Source: SURS / SORS

ŠTEVILO IN POVRŠINA STAVB, ZA KATERE SO BILA IZDANA GRADBENA DOVOLJENJA, PO ENOTNI KLASIFIKACIJI VRST OBJEKTOV (CC-SI), INVESTITOR FIZIČNA OSEBA

Fizičnim osebam izdanih več kot 35.000 dovoljenj za gradnjo enostanovanjskih stavb

Fizičnim osebam je bilo izdanih največ gradbenih dovoljenj za gradnjo enostanovanjskih stavb, skupaj skoraj 35.200, s skupno površino več kot

NUMBER AND FLOOR AREA OF BUILDINGS FOR WHICH BUILDING PERMITS WERE ISSUED IN THE 1999–2009 PERIOD IN SLOVENIA, BY CLASSIFICATION OF TYPES OF CONSTRUCTIONS (CC-SI), INVESTOR NATURAL PERSON

More than 35,000 building permits for one-dwelling buildings issued to natural persons

Most building permits were issued to natural persons for one-dwelling buildings; all together for almost 35,200 buildings measuring slightly more



8.171.000 m². Za gradnjo nestanovanjskih kmetijskih stavb s skupno površino skoraj 1.262.000 m² jim je bilo izdanih skupno skoraj 5.800 gradbenih dovoljenj, za gradnjo dvostanovanjskih stavb s skupno površino dobrih 893.000 m² pa skoraj 2.800 gradbenih dovoljenj.

Fizičnim osebam izdana 4 gradbena dovoljenja za gradnjo muzejev in knjižnic

Fizičnim osebam so bila v opazovanem obdobju izdana 4 gradbena dovoljenja za gradnjo muzejev in knjižnic, in sicer s skupno površino skoraj 1.600 m², 9 gradbenih dovoljenj jim je bilo izdanih za gradnjo kulturnih spomenikov s skupno površino skoraj 800 m², 10 gradbenih dovoljenj pa za gradnjo postaj, terminalov, stavb za izvajanje elektronskih komunikacij ter z njimi povezanih stavb s skupno površino skoraj 5.000 m².

than 8,171,000 square metres. As regards the number of building permits issued for non-residential farm buildings, almost 5,800 building permits were issued for the total floor area of almost 1,262,000 square metres, while for two-dwelling buildings almost 2,800 building permits were issued for buildings measuring slightly more than 893,000 square metres.

4 building permits issued to natural persons for museums and libraries

In the 1999-2009 period the fewest building permits were issued to natural persons for museums and libraries (4) with the total floor area of almost 1,600 square metres. 9 building permits were issued to natural persons for historic or protected monuments with the total floor area of almost 800 square metres, while 10 building permits were issued for communication buildings, stations, terminals and associated buildings with the total floor area of almost 5,000 square metres.

Tabela 11: Število in površina stavb, za katere so bila izdana gradbena dovoljenja, investitor pravna oseba, Slovenija, 1999–2009
Table 11: Number and floor area of buildings for which building permits were issued, investor legal person, Slovenia, 1999-2009

	Število stavb Number of buildings	Površina stavb (1.000 m ²) Floor area (1.000 m ²)	
1 STAVBE	11.038	13.907,7	1 BUILDINGS
11 STANOVANJSKE STAVBE	4.436	4.526,8	11 RESIDENTIAL BUILDINGS
111 Enostanovanjske stavbe	2.347	542,3	111 One-dwelling buildings
1110 Enostanovanjske stavbe	2.347	542,3	1110 One-dwelling buildings
112 Večstanovanjske stavbe	1.959	3.555,3	112 Two- and more dwelling buildings
1121 Dvostanovanjske stavbe	592	204,8	1121 Two-dwelling buildings
1122 Tri- in večstanovanjske stavbe	1.367	3.350,5	1122 Three- and more dwelling buildings
113 Stanovanjske stavbe za posebne namene	130	429,2	113 Residences for communities
1130 Stanovanjske stavbe za posebne namene	130	429,2	1130 Residences for communities
12 NESTANOVANJSKE STAVBE	6.602	9.380,9	12 NON-RESIDENTIAL BUILDINGS
121 Gostinske stavbe	546	813,3	121 Hotels and similar buildings
1211 Hotelske in podobne gostinske stavbe	404	720,0	1211 Hotel buildings
1212 Druge gostinske stavbe za kratkotrajno nastanitev	142	93,3	1212 Other short-stay accommodation buildings
122 Upravne in pisarniške stavbe	1.060	1.296,6	122 Office buildings
1220 Upravne in pisarniške stavbe	1.060	1.296,6	1220 Office buildings
123 Trgovske in druge stavbe za storitvene dejavnosti	1.233	2.162,9	123 Wholesale and retail trade buildings
1230 Trgovske in druge stavbe za storitvene dejavnosti	1.233	2.162,9	1230 Wholesale and retail trade buildings
124 Stavbe za promet in stavbe za izvajanje elektronskih komunikacij	289	582,5	124 Traffic and communications buildings
1241 Postaje, terminali, stavbe za izvajanje elektronskih komunikacij ter z njimi	57	25,5	1241 Communication buildings, stations, terminals and associated buildings
1242 Garažne stavbe	232	556,9	1242 Garage buildings
125 Industrijske stavbe in skladišča	1.972	2.836,3	125 Industrial buildings and warehouses
1251 Industrijske stavbe	1.356	1.942,8	1251 Industrial buildings
1252 Rezervoarji, silosi in skladišča	616	893,5	1252 Reservoirs, silos and warehouses
126 Stavbe splošnega družbenega pomena	857	1.229,8	126 Buildings for public entertainment, education or hospital and institutional care
1261 Stavbe za kulturo in razvedrilo	135	139,7	1261 Buildings for public entertainment
1262 Muzeji in knjižnice	67	88,1	1262 Museums and libraries
1263 Stavbe za izobraževanje in znanstvenoraziskovalno delo	360	519,1	1263 School, university and research buildings
1264 Stavbe za zdravstvo	153	262,6	1264 Hospital and institutional care buildings
1265 Športne dvorane	142	220,3	1265 Sports halls
127 Druge nestanovanjske stavbe	645	459,6	127 Other non-residential buildings
1271 Nestanovanjske kmetijske stavbe	93	155,5	1271 Non-residential farm buildings
1272 Stavbe za opravljanje verskih obredov, pokopališke stavbe	161	39,3	1272 Buildings used as places of worship and for religious activities
1273 Kulturni spomeniki	14	10,1	1273 Historic or protected monuments
1274 Druge nestanovanjske stavbe, ki niso uvrščene drugje	377	254,7	1274 Other non-residential buildings n.e.c.

Vir / Source: SURS / SORS



ŠTEVILO IN POVRŠINA STAVB, ZA KATERE SO BILA IZDANA GRADBENA DOVOLJENJA, PO ENOTNI KLASIFIKACIJI VRST OBJEKTOV (CC-SI), INVESTITOR PRAVNA OSEBA

Pravnim osebam izdanih več kot 2.300 dovoljenj za gradnjo enostanovanjskih stavb

Pravnim osebam je bilo izdanih največ gradbenih dovoljenj za gradnjo enostanovanjskih stavb, skupaj več kot 2.300, s skupno površino nad 542.000 m². Za gradnjo tri- in večstanovanjskih stavb jim je bilo izdanih nekaj več kot 1.350 gradbenih dovoljenj s skupno površino nad 3.350.000 m², za gradnjo industrijskih stavb pa nekaj več kot 1.350 gradbenih dovoljenj s skupno površino skoraj 1.943.000 m².

Pravnim osebam izdanih 14 dovoljenj za gradnjo kulturnih spomenikov

Za gradnjo kulturnih spomenikov je bilo pravnim osebam v celotnem obdobju 1999–2009 izdanih 14 gradbenih dovoljenj, s skupno površino nekaj več kot 10.000 m². Za gradnjo postaj, terminalov, stavb za izvajanje elektronskih komunikacij ter z njimi povezanih stavb, s skupno površino malo čez 25.500 m² je bilo izdanih 57 gradbenih dovoljenj, za gradnjo muzejev in knjižnic s skupno površino 88.000 m² pa je bilo pravnim osebam izdanih 67 gradbenih dovoljenj.

STATISTIČNA IN DRUGA ZNAMENJA

% odstotek
, decimalna vejica

KRATICE

mio. milijon
GURS Geodetska uprava Republike Slovenije
SURS Statistični urad Republike Slovenije

MERSKA ENOTA

m² kvadratni meter

METODOLOŠKA POJASNILA

Namen raziskovanja

Namen je pridobiti podatke o gradbeni dejavnosti za **stavbe** na osnovi gradbenih dovoljenj, ki jih je izdal upravni organ. Vsako izdano dovoljenje spremljamo posebej.

Podatki so pomembni za statistično spremljanje kratkoročnega gibanja v gradbeni dejavnosti, za pregled nad posegi v prostor, za poslovno odločanje v gradbeni dejavnosti in z njo povezanih dejavnostih industrijske proizvodnje ter za mednarodne primerjave.

Enote opazovanja

Opazovane enote so vse stavbe, za katere je upravna enota izdala gradbena dovoljenja. Razvrščanje gradbenih objektov na stavbe in gradbene inženirske objekte opredeljuje klasifikacija, ki je bila sprejeta z Uredbo o uvedbi in uporabi enotne klasifikacije vrst objektov in o določitvi objektov državnega pomena (Uradni list RS, št. 33/03). Enotna

NUMBER AND FLOOR AREA OF BUILDINGS FOR WHICH BUILDING PERMITS WERE ISSUED IN THE 1999-2009 PERIOD IN SLOVENIA, BY CLASSIFICATION OF TYPES OF CONSTRUCTIONS (CC-SI), INVESTOR LEGAL PERSON

More than 2,300 building permits for one-dwelling buildings issued to legal persons

Most building permits were issued to legal persons for one-dwelling buildings; all together for more than 2,300 buildings measuring more than 542,000 square metres. As regards the number of issued building permits for three- and more dwelling buildings, more than 1,350 building permits were issued for the total floor area of more than 3,350,000 square metres, while for industrial buildings more than 1,350 building permits were issued for buildings measuring almost 1,943,000 square metres.

14 building permits issued to legal persons for historic or protected monuments

In the 1999-2009 period the fewest building permits were issued to legal persons for historic and protected monuments (14) with the total floor area of just over 10,000 square metres. For communication buildings, stations, terminals and associated buildings 57 building permits were issued for the total floor area of slightly more than 25,500 square metres, while for museums and libraries 67 building permits were issued for the total floor area of 88,000 square metres.

STATISTICAL AND OTHER SIGNS

% percentage
, decimal point (in tables, charts)

ABBREVIATIONS

Nr. number
mio. million
SMA Surveying and Mapping Authority of the Republic of Slovenia
SORS Statistical Office of the Republic of Slovenia

UNIT OF MEASUREMENT

m² square metre

METHODOLOGICAL EXPLANATIONS

Purpose of the survey

The purpose is to obtain statistical data on construction activity for **buildings** on the basis of building permits issued by the administrative body. Each permit is followed separately.

Data are important for statistical monitoring of short-term changes in the construction activity, review of interventions into living space, business decision-making in construction and related industrial production activities, international comparisons.

Observation units

Observation units are all buildings for which the administrative unit issued building permits. Classification of constructions into buildings and civil engineering works is determined by the classification adopted with the Decree on the Introduction and Application of the Classification of Types of Constructions and Determination of Constructions of National Importance (OJ



klasifikacija vrst objektov (CC-SI) temelji na klasifikaciji Classification of Types of Constructions (CC), ki se uporablja v Evropski uniji.

Vir in način zbiranja podatkov

Podatke o izdanih gradbenih dovoljenjih za stavbe zbiramo z mesečnim statističnim vprašalnikom z naslovom Vprašalnik o dovoljenju za gradnjo stavbe GRAD-GD-M. Vir podatkov za izpolnjevanje vprašalnika je projektna dokumentacija za pridobitev gradbenega dovoljenja, s katero razpolaga oddelek za okolje in prostor v okviru upravnega organa. Raziskovanje izvajamo od leta 1998.

Zajetje in klasifikacije prikaza podatkov

V to statistično raziskovanje so zajete vse stanovanjske in nestanovanjske stavbe, za katere je v opazovanem obdobju upravna enota izdala gradbeno dovoljenje za: novogradnjo, povečavo ali spremembo namembnosti. Pri povečavah stanovanjskih stavb ne upoštevamo prizidave sob ali pomožnih prostorov.

Za razvrščanje stavb na stanovanjske in nestanovanjske stavbe uporabljamo klasifikacijo, ki je bila sprejeta z Uredbo o uvedbi in uporabi enotne klasifikacije vrst objektov in o določitvi objektov državnega pomena (Uradni list RS, št. 33/03) – Enotno klasifikacijo vrst objektov (CC-SI). Ta temelji na klasifikaciji Classification of Types of Constructions (CC), ki se uporablja v Evropski uniji.

Pravna podlaga

Raziskovanje poteka na podlagi Zakona o državni statistiki (Uradni list RS, št. 45/95 in št. 9/01), letnega programa statističnih raziskovanj in Uredbe Sveta št. 1165/98 (Uradni list ES, L 162).

Definicije

Gradbeno dovoljenje za stavbo je odločba, s katero pristojni upravni organ dovoli gradnjo in s katero predpiše konkretne pogoje, ki jih je treba pri gradnji upoštevati.

Stavba je objekt z enim ali več prostori, v katere človek lahko vstopi in so namenjeni prebivanju ali opravljanju dejavnosti.

Stanovanjska stavba je stavba, od katere se vsaj polovica uporabne površine uporablja za prebivanje. Če se za prebivanje uporablja manj kot polovica uporabne površine stavbe, se ta uvrsti k nestanovanjskim stavbam, in sicer po pretežni namembnosti.

Nestanovanjska stavba je stavba, od katere se več kot polovica uporabne površine uporablja za opravljanje dejavnosti. Če se vsaj polovica uporabne površine stavbe uporablja za prebivanje, se stavba uvrsti k stanovanjskim stavbam.

Površina stavbe obsega vsoto površin vseh etaž stavbe, ki jo določa veljavni tehnični predpis.

Stanovanje je vsaka gradbeno povezana celota, ki je namenjena za stanovanje in ima eno ali več sob z ustreznimi pomožnimi prostori (kuhinja, shramba, predsoba, kopalnica, stranišče) ali je brez njih ter ima vsaj en lasten vhod.

V površini stanovanja je upoštevana uporabna površina sob, kuhinje in drugih pomožnih prostorov, površina zaprtih teras in verand ter površina pod vgrajenimi omarami. Površine kleti, podstrešja (neprimerne za bivanje), skupnih prostorov v večstanovanjskih stavbah niso upoštevane.

RS No. 33/03). The Slovene Classification of Types of Constructions CC-SI is based on the Classification of Types of Constructions (CC) used in the European Union.

Source and method of data collection

Data are obtained with the monthly Questionnaire on Building Permits (GRAD-GD/M). The survey has been carried out since 1998. The source of data is the project documentation for obtaining the building permit, which is available at the department for environment and spatial planning within the administrative body.

Coverage and classifications used

This statistical survey covers all residential and non-residential buildings for which the administrative unit issued a building permit in the observed period (for new construction, extension and conversion-improvement). At extensions of dwellings we do not take into consideration extension of rooms or utility spaces.

Classification of buildings into residential and non-residential buildings is determined by the classification adopted with the Decree on the Introduction and Application of the Classification of Types of Constructions and Determination of Constructions of National Importance (OJ RS No. 33/03). The Slovene Classification of Types of Constructions CC-SI is based on the Classification of Types of Constructions (CC) used in the European Union.

Legal basis

The survey is implemented on the basis of the National Statistics Act (OJ RS No. 45/95 and 9/01), the Annual Program of Statistical Surveys and Council Regulation No. 1165/98 (Official Journal of the European Union, L 162).

Definitions

Building permit is a decision with which the authorised administrative body allows construction and with which it prescribes concrete conditions that have to be considered.

Buildings are structures with one or more rooms into which a person can enter and are intended for residence or for performing an activity.

Residential buildings are constructions at least half of which is used for residential purposes. If less than half of the overall useful floor area is used for residential purposes, the building is classified under non-residential buildings in accordance with its purpose-oriented design.

Non-residential buildings are constructions that are mainly used or intended for non-residential purposes. If at least half of the overall useful floor area is used for residential purposes, the building is classified as a residential building.

Floor area of buildings is the sum total of floor area of all storeys of the building defined by the valid technical regulation.

A dwelling is any structurally unified whole intended for residence, with one or more rooms, with or without appropriate utility spaces (kitchen, larder, hallway, bathroom, toilet) and with at least one separate entrance.

The useful floor area of a dwelling covers the usable area of the rooms, kitchen and other auxiliary interiors, the area of enclosed terraces and verandas, and the area enclosed by fitted cupboards. The area of cellar, attic (unfit for habitation), collective areas in apartment houses not taken into consideration.



Investitor

Pravna oseba

So gospodarske družbe, zavodi društva, organi in organizacije, ki z vpisom v pristojni konstitutivni register, ustrezno evidenco ali ustreznimi razvidi ali z zakonom pridobijo status pravne osebe.

Fizična oseba

So posamezniki in samostojni podjetniki posamezniki.

Skupaj so pravne osebe in fizične osebe skupaj.

Pojasnila

Začasne četrtletne podatke objavljamo po datumu prejema gradbenega dovoljenja. Pri končnih podatkih upoštevamo uradni datum izdaje dovoljenja.

Objavljanje rezultatov

Četrtletno:

Statistika gradbenih dovoljenj za stavbe. *Prva objava*

Podatkovni portal SI-STAT (<http://www.stat.si>)

Letno:

- Statistični letopis Republike Slovenije
- Slovenija v številkah
- Podatkovni portal SI-STAT (<http://www.stat.si>)

Investor

Legal persons

Are companies, institutions, associations and other organisations that obtain the status of legal persons by registration in an adequate constitutive register or record, or by law.

Natural persons

Are private persons and individual private entrepreneurs.

Total are both legal persons and natural persons.

Explanations

Provisional quarterly data are published by the date of the receipt of the building permit. In publishing the final data we take into consideration the official date of the issue of the building permit.

Data publishing

Quarterly:

Statistics of building permits. *First Release*

SI-STAT Database (<http://www.stat.si>)

Annually:

- Statistical Yearbook of the Republic of Slovenia
- Slovenia in Figures
- SI-STAT Database (<http://www.stat.si>)

Avtorica Ajda Demšar

Author Ajda Demšar

Publikacija je na voljo na spletnem naslovu www.stat.si/pub.asp
Informacije daje Informacijsko središče:
tel. (01) 241 51 04
elektronska pošta info.stat@gov.si

Access to the publication at: www.stat.si/eng/pub.asp
Information: Information Centre
phone: + 386 1 241 51 04
e-mail: info.stat@gov.si

KAKO DO STATISTIČNIH PODATKOV IN INFORMACIJ?

- **na spletnih straneh Statističnega urada**
www.stat.si
- **po pošti, telefonu, telefaksu ali elektronsko**
naslov: Statistični urad Republike Slovenije
Vožarski pot 12, 1000 Ljubljana, Slovenija
telefon: (01) 241 51 04
faks: (01) 241 53 44
telefonski odzivnik: (01) 475 65 55
e-naslov: info.stat@gov.si
- **z naročilom statističnih publikacij**
naslov: Statistični urad Republike Slovenije
Vožarski pot 12, 1000 Ljubljana, Slovenija
telefon: (01) 241 52 84
faks: (01) 241 53 44
e-naslov: prodaja.surs@gov.si
- **z obiskom v Informacijskem središču**
poslovni čas: od ponedeljka do četrтка od 9.00 do 15.30
petek od 9.00 do 14.30

HOW TO OBTAIN STATISTICAL DATA AND INFORMATION?

- **on Statistical Office's web pages**
www.stat.si
- **via mail, phone, fax and e-mail**
address: Statistical Office of the Republic of Slovenia
Vožarski pot 12, 1000 Ljubljana, Slovenia
phone: +386 1 241 51 04
fax: +386 1 241 53 44
answering machine: +386 1 475 65 55
e-mail: info.stat@gov.si
- **by ordering statistical publications**
address: Statistical Office of the Republic of Slovenia
Vožarski pot 12, 1000 Ljubljana, Slovenia
phone: +386 1 241 52 84
fax: +386 1 241 53 44
e-mail: prodaja.surs@gov.si
- **by visiting the Information Centre**
office hours: Monday to Thursday from 9.00 to 15.30
Friday from 9.00 to 14.30

