

Koral in Tokata

Koral in tekata

Largo (♩ = 40)

I.

Handwritten musical score for the first system. The score is written on ten staves. The instruments listed on the left are: 1st fl., 2nd fl., 2nd clarinet, 1st bassoon, 2nd bassoon, 3rd clarinet, 3rd horn, 4th horn, 1st trumpet, 2nd trumpet, 3rd trumpet, 1st trombone, 2nd trombone, 3rd trombone, 1st tuba, and 2nd tuba. The music begins with a large circle on the first staff, followed by a series of notes and rests across the staves. The notation includes various note values, rests, and dynamic markings.

Handwritten musical score for the second system. The score is written on ten staves. A circled number '1' is written above the first staff. The music continues with various notes and rests across the staves. The notation includes various note values, rests, and dynamic markings.

Handwritten musical score for the first system. The top staff is a vocal line with notes and rests, including a fermata. The bottom staff is a piano accompaniment with chords and arpeggiated figures. A large handwritten '2' is written vertically in the center of the system. To the right, there are additional notes and a circled '2'.

Handwritten musical score for the second system. The top staff contains performance instructions: *rit. = rit. p.*, *2 fl. = 2 fl.*, *ab. II = to II.*, and *ab. III = ab. I.*. The notation includes various notes, rests, and dynamic markings such as *mf*, *pp*, and *ppp*. There are also some crossed-out notes and a large handwritten '2' at the end of the system.

3

Handwritten musical score for the first system. It consists of five staves. The top two staves contain melodic lines with various notes and rests. The bottom three staves contain rhythmic patterns, including repeated notes and rests, with some slanted lines indicating specific articulation or dynamics. A circled number '3' is written above the first staff. A handwritten note '1. m. m. m.' with arrows points to a specific measure in the bottom staff. Below this, another note '2. m. m. m.' is written. At the bottom right of the system, there is a handwritten instruction 'ppp (ant.)'.

Handwritten musical score for the second system, continuing from the first system. It consists of five staves. The notation includes various notes, rests, and dynamic markings. A handwritten instruction 'tutti pira' is written above the bottom staff. The bottom staff contains a series of notes with stems pointing downwards, possibly indicating a specific rhythmic pattern or articulation. The system concludes with a double bar line and a large handwritten '10' at the bottom center.

Handwritten musical score for the first system. It consists of five staves. The top two staves are for the violin and viola, and the bottom three are for the cello and double bass. The music includes various notes, rests, and dynamic markings such as *mf*, *ppp*, *mp*, and *arco*. There are also some handwritten annotations like "3" and "2" in the middle of the system.

Handwritten musical score for the second system. It continues the piece with similar notation and dynamics. The first part of the system shows a *rit.* (ritardando) section with a *p* (piano) dynamic. The second part features a *tr.* (trill) marking. The bottom staff includes *pizz.* (pizzicato) and *arco* markings. The system concludes with a *rit.* (ritardando) and *pizz.* marking.

Handwritten musical score for the first system. It consists of five staves. The top staff has a circled number '5'. The score includes various musical notations such as notes, rests, and dynamic markings. Annotations include '+rit.', '+acc. (pizz.)', 'arco', and 'pizz.'. There are also some handwritten notes like 'x' and 'ch. = vlt.'.

Handwritten musical score for the second system, also consisting of five staves. It features similar musical notation to the first system. Annotations include 'arco', 'pizz.', and 'x)'. There are also some handwritten notes like '2 cor.' and '3 cor.'.

x) no Holz is ligature

Handwritten musical score for the first system, featuring multiple staves with notes, rests, and various annotations.

Annotations include:

- + pizz.* (pizzicato)
- rit.* (ritardando)
- al. T. = vla.* (Alto Trombone = Viola)
- Fl. II = vla. II* (Flute II = Viola II)
- Fl. III = vla. III* (Flute III = Viola III)
- Fl. IV = vla. IV* (Flute IV = Viola IV)
- Fl. V = vla. V* (Flute V = Viola V)
- Fl. VI = vla. VI* (Flute VI = Viola VI)
- Fl. VII = vla. VII* (Flute VII = Viola VII)
- Fl. VIII = vla. VIII* (Flute VIII = Viola VIII)
- Fl. IX = vla. IX* (Flute IX = Viola IX)
- Fl. X = vla. X* (Flute X = Viola X)
- Fl. XI = vla. XI* (Flute XI = Viola XI)
- Fl. XII = vla. XII* (Flute XII = Viola XII)
- Fl. XIII = vla. XIII* (Flute XIII = Viola XIII)
- Fl. XIV = vla. XIV* (Flute XIV = Viola XIV)
- Fl. XV = vla. XV* (Flute XV = Viola XV)
- Fl. XVI = vla. XVI* (Flute XVI = Viola XVI)
- Fl. XVII = vla. XVII* (Flute XVII = Viola XVII)
- Fl. XVIII = vla. XVIII* (Flute XVIII = Viola XVIII)
- Fl. XIX = vla. XIX* (Flute XIX = Viola XIX)
- Fl. XX = vla. XX* (Flute XX = Viola XX)
- Fl. XXI = vla. XXI* (Flute XXI = Viola XXI)
- Fl. XXII = vla. XXII* (Flute XXII = Viola XXII)
- Fl. XXIII = vla. XXIII* (Flute XXIII = Viola XXIII)
- Fl. XXIV = vla. XXIV* (Flute XXIV = Viola XXIV)
- Fl. XXV = vla. XXV* (Flute XXV = Viola XXV)
- Fl. XXVI = vla. XXVI* (Flute XXVI = Viola XXVI)
- Fl. XXVII = vla. XXVII* (Flute XXVII = Viola XXVII)
- Fl. XXVIII = vla. XXVIII* (Flute XXVIII = Viola XXVIII)
- Fl. XXIX = vla. XXIX* (Flute XXIX = Viola XXIX)
- Fl. XXX = vla. XXX* (Flute XXX = Viola XXX)

Other markings include *rit.*, *al. T. = vla.*, *Fl. II = vla. II*, *Fl. III = vla. III*, *Fl. IV = vla. IV*, *Fl. V = vla. V*, *Fl. VI = vla. VI*, *Fl. VII = vla. VII*, *Fl. VIII = vla. VIII*, *Fl. IX = vla. IX*, *Fl. X = vla. X*, *Fl. XI = vla. XI*, *Fl. XII = vla. XII*, *Fl. XIII = vla. XIII*, *Fl. XIV = vla. XIV*, *Fl. XV = vla. XV*, *Fl. XVI = vla. XVI*, *Fl. XVII = vla. XVII*, *Fl. XVIII = vla. XVIII*, *Fl. XIX = vla. XIX*, *Fl. XX = vla. XX*, *Fl. XXI = vla. XXI*, *Fl. XXII = vla. XXII*, *Fl. XXIII = vla. XXIII*, *Fl. XXIV = vla. XXIV*, *Fl. XXV = vla. XXV*, *Fl. XXVI = vla. XXVI*, *Fl. XXVII = vla. XXVII*, *Fl. XXVIII = vla. XXVIII*, *Fl. XXIX = vla. XXIX*, *Fl. XXX = vla. XXX*.

Handwritten musical score for the second system, continuing the notation and annotations from the first system.

Annotations include:

- rit.* (ritardando)
- al. T. = vla.* (Alto Trombone = Viola)
- Fl. II = vla. II* (Flute II = Viola II)
- Fl. III = vla. III* (Flute III = Viola III)
- Fl. IV = vla. IV* (Flute IV = Viola IV)
- Fl. V = vla. V* (Flute V = Viola V)
- Fl. VI = vla. VI* (Flute VI = Viola VI)
- Fl. VII = vla. VII* (Flute VII = Viola VII)
- Fl. VIII = vla. VIII* (Flute VIII = Viola VIII)
- Fl. IX = vla. IX* (Flute IX = Viola IX)
- Fl. X = vla. X* (Flute X = Viola X)
- Fl. XI = vla. XI* (Flute XI = Viola XI)
- Fl. XII = vla. XII* (Flute XII = Viola XII)
- Fl. XIII = vla. XIII* (Flute XIII = Viola XIII)
- Fl. XIV = vla. XIV* (Flute XIV = Viola XIV)
- Fl. XV = vla. XV* (Flute XV = Viola XV)
- Fl. XVI = vla. XVI* (Flute XVI = Viola XVI)
- Fl. XVII = vla. XVII* (Flute XVII = Viola XVII)
- Fl. XVIII = vla. XVIII* (Flute XVIII = Viola XVIII)
- Fl. XIX = vla. XIX* (Flute XIX = Viola XIX)
- Fl. XX = vla. XX* (Flute XX = Viola XX)
- Fl. XXI = vla. XXI* (Flute XXI = Viola XXI)
- Fl. XXII = vla. XXII* (Flute XXII = Viola XXII)
- Fl. XXIII = vla. XXIII* (Flute XXIII = Viola XXIII)
- Fl. XXIV = vla. XXIV* (Flute XXIV = Viola XXIV)
- Fl. XXV = vla. XXV* (Flute XXV = Viola XXV)
- Fl. XXVI = vla. XXVI* (Flute XXVI = Viola XXVI)
- Fl. XXVII = vla. XXVII* (Flute XXVII = Viola XXVII)
- Fl. XXVIII = vla. XXVIII* (Flute XXVIII = Viola XXVIII)
- Fl. XXIX = vla. XXIX* (Flute XXIX = Viola XXIX)
- Fl. XXX = vla. XXX* (Flute XXX = Viola XXX)

Other markings include *rit.*, *al. T. = vla.*, *Fl. II = vla. II*, *Fl. III = vla. III*, *Fl. IV = vla. IV*, *Fl. V = vla. V*, *Fl. VI = vla. VI*, *Fl. VII = vla. VII*, *Fl. VIII = vla. VIII*, *Fl. IX = vla. IX*, *Fl. X = vla. X*, *Fl. XI = vla. XI*, *Fl. XII = vla. XII*, *Fl. XIII = vla. XIII*, *Fl. XIV = vla. XIV*, *Fl. XV = vla. XV*, *Fl. XVI = vla. XVI*, *Fl. XVII = vla. XVII*, *Fl. XVIII = vla. XVIII*, *Fl. XIX = vla. XIX*, *Fl. XX = vla. XX*, *Fl. XXI = vla. XXI*, *Fl. XXII = vla. XXII*, *Fl. XXIII = vla. XXIII*, *Fl. XXIV = vla. XXIV*, *Fl. XXV = vla. XXV*, *Fl. XXVI = vla. XXVI*, *Fl. XXVII = vla. XXVII*, *Fl. XXVIII = vla. XXVIII*, *Fl. XXIX = vla. XXIX*, *Fl. XXX = vla. XXX*.

7

Handwritten musical score for the first system. It consists of multiple staves. The top staves contain notes and rests, with some accidentals (sharps and flats). The lower staves contain rhythmic notation, including stems, beams, and flags. There are several dynamic markings: *pp*, *ppp*, *ppp (sub.)*, and *ppp*. A circled number '7' is written in the upper right corner of the page.

Handwritten musical score for the second system. The top staves are mostly blank. The bottom staves contain notes and rests, with some accidentals. There is a large, wavy scribble on the right side of the page, crossing over several staves. Dynamic markings include *ppp* and *ppp* at the bottom right.

rit.

Handwritten musical score for the first system, featuring a vocal line with notes and rests, and a piano accompaniment with chords and arpeggios. The score is marked with "rit." and includes various musical notations such as slurs and dynamic markings.

Handwritten musical score for the second system, continuing the vocal and piano parts. It includes dynamic markings like "ppp" and various chordal structures.

Maria

to.

al. in *piu piano: 3al.*

rit. ab. b7

piu.

morda rista pinto mize (ab. f. 2.)

ne sa tolato; morda sa konesto fohalli.

Handwritten musical score for the third system, including lyrics and performance instructions. The lyrics are in Finnish and include "morda rista pinto mize" and "ne sa tolato; morda sa konesto fohalli."

Handwritten musical score for the fourth system, showing the continuation of the piano accompaniment with various rhythmic patterns and chords.

Allegro merpico (♩ = 160)

II.

Handwritten musical score for the first system, including parts for Oboe (Ott.), Flute (Fl.), Clarinet (Cl.), Bassoon (Fag.), Trumpet (Tromp.), and Percussion (Perc.).

Instrument parts and markings:

- Ott. (Oboe): *rit. = rit. II.*
- Fl. (Flute): *rit. = rit. I.*
- Cl. (Clarinet): *rit. = rit. II.*
- Fag. (Bassoon): *rit. = rit. II.*
- Tromp. (Trumpet): *f sempre*
- Perc. (Percussion): *rit. II.*

Other markings include *rit. = rit. II.* and *rit. = rit. II.* in the woodwind parts, and *rit. II.* in the percussion part. The percussion part shows a rhythmic pattern of vertical strokes.

Handwritten musical score for the second system, including parts for Violin I (Vcl. I.), Violin II (Vcl. II.), Viola (Vcl. III.), Cello (Vcl. IV.), and Double Bass (Vcl. V.).

Instrument parts and markings:

- Vcl. I. (Violin I): *rit. = rit. II.*
- Vcl. II. (Violin II): *rit. = rit. II.*
- Vcl. III. (Viola): *rit. = rit. II.*
- Vcl. IV. (Cello): *rit. = rit. II.*
- Vcl. V. (Double Bass): *rit. = rit. II.*

Other markings include *rit. = rit. II.* and *rit. = rit. II.* in the string parts. The double bass part shows a rhythmic pattern of vertical strokes.

Handwritten musical score for the first system, consisting of six staves. The notation includes various notes, rests, and dynamic markings. Key annotations include:

- Staff 2: $alt. T. = alt. T. p$
- Staff 4: $2 fl. p.$
- Staff 5: $2 fl. = alt. T.$
- Staff 6: $alt. T. = alt. T. p$

The score features complex rhythmic patterns and dynamic markings such as pp , p , and f . There are also some handwritten notes and symbols like tt and ph .

Handwritten musical score for the second system, consisting of six staves. The notation includes various notes, rests, and dynamic markings. Key annotations include:

- Staff 2: $2 alt. = alt. T.$
- Staff 4: $alt. = alt. T.$
- Staff 5: $alt. = alt. T.$
- Staff 6: $alt. = alt. T.$

The score features complex rhythmic patterns and dynamic markings such as pp , p , and f . There are also some handwritten notes and symbols like tt and ph .

1=1

1=1 (9) *)

2 fl. = rla. p-
 2 ob. = rla. p-
 r. cl. = rla.
 2 ad. = rla. p-
 sax. = rla.
 eff. cl. b. = rla.
 eff. = rla.

4 cor. = rla.

sempre ff

pr. a.

Cor. I
Cor. II, III, IV

pr. a.

*) na pitale in trahita le po kekib 8 smink, nato 2-3 smirki paze pa dib, itel. med seboj se puzetajace

10

Handwritten musical score for the first system. It consists of several staves. The top staff has a treble clef and contains a melodic line with various notes and rests. Below it, there are two staves with bass clefs, one of which has the instruction "suff." written above it. To the right of these staves, there are notes and rests, with the instruction "ad lib." written above. Below the main staves, there are two more staves with bass clefs, one of which has the instruction "4 cor." written above it. To the right of these staves, there are notes and rests, with the instruction "ad lib." written above. In the center of the system, there is a large handwritten note: "p (ent.)". At the bottom of the system, there are two staves with bass clefs, one of which has the instruction "tr" written below it. To the right of these staves, there are notes and rests, with the instruction "ad lib." written below.

Handwritten musical score for the second system. It consists of several staves. The top staff has a treble clef and contains a melodic line with various notes and rests. Below it, there are two staves with bass clefs, one of which has the instruction "tr" written below it. To the right of these staves, there are notes and rests, with the instruction "ad lib." written below. In the center of the system, there is a large handwritten note: "pp". At the bottom of the system, there are two staves with bass clefs, one of which has the instruction "tr" written below it. To the right of these staves, there are notes and rests, with the instruction "ad lib." written below.

Handwritten musical score for the first system. It consists of five staves. The top two staves are for piano, and the bottom three are for violin. The piano part includes dynamic markings such as *mf.* and *ppp*, and a fermata. The violin part features a melodic line with various accidentals and articulation marks.

Handwritten musical score for the second system. It consists of five staves. The top two staves are for piano, and the bottom three are for violin. The piano part includes dynamic markings such as *p*, *pp*, and *cresc.*, and a fermata. The violin part features a melodic line with various accidentals and articulation marks.

Handwritten musical score for the first system. It consists of five staves. The top two staves are for strings, with notes and rests. The middle two staves are for woodwinds, with notes and rests. The bottom staff is for the piano, with notes and rests. The score includes various dynamic markings such as *p*, *mf*, *f*, and *pp*. There are also performance instructions like *arco* and *rit.*. The notation includes slurs, ties, and accidentals.

Handwritten musical score for the second system. It consists of five staves. The top two staves are for strings, with notes and rests. The middle two staves are for woodwinds, with notes and rests. The bottom staff is for the piano, with notes and rests. The score includes various dynamic markings such as *p*, *mf*, *f*, and *pp*. There are also performance instructions like *arco* and *rit.*. The notation includes slurs, ties, and accidentals.

M

Handwritten musical score for the first system, featuring multiple staves with complex notation and various annotations.

Annotations include:

- Staff 1: *b+*, *b+*, *p*, *p*
- Staff 2: *b+*, *b+*, *p*, *p*
- Staff 3: *b+*, *p*, *p*
- Staff 4: *fff*, *fff*
- Staff 5: *3 cor.*, *4 cor.*, *trump. I.*, *trump. II.*, *trump. III.*
- Staff 6: *st. arco*
- Staff 7: *st.*, *st.*
- Staff 8: *st. arco*
- Staff 9: *st.*, *st.*
- Staff 10: *st.*, *st.*
- Staff 11: *st.*, *st.*
- Staff 12: *st.*, *st.*
- Staff 13: *st.*, *st.*
- Staff 14: *st.*, *st.*
- Staff 15: *st.*, *st.*
- Staff 16: *st.*, *st.*
- Staff 17: *st.*, *st.*
- Staff 18: *st.*, *st.*
- Staff 19: *st.*, *st.*
- Staff 20: *st.*, *st.*
- Staff 21: *st.*, *st.*
- Staff 22: *st.*, *st.*
- Staff 23: *st.*, *st.*
- Staff 24: *st.*, *st.*
- Staff 25: *st.*, *st.*
- Staff 26: *st.*, *st.*
- Staff 27: *st.*, *st.*
- Staff 28: *st.*, *st.*
- Staff 29: *st.*, *st.*
- Staff 30: *st.*, *st.*
- Staff 31: *st.*, *st.*
- Staff 32: *st.*, *st.*
- Staff 33: *st.*, *st.*
- Staff 34: *st.*, *st.*
- Staff 35: *st.*, *st.*
- Staff 36: *st.*, *st.*
- Staff 37: *st.*, *st.*
- Staff 38: *st.*, *st.*
- Staff 39: *st.*, *st.*
- Staff 40: *st.*, *st.*
- Staff 41: *st.*, *st.*
- Staff 42: *st.*, *st.*
- Staff 43: *st.*, *st.*
- Staff 44: *st.*, *st.*
- Staff 45: *st.*, *st.*
- Staff 46: *st.*, *st.*
- Staff 47: *st.*, *st.*
- Staff 48: *st.*, *st.*
- Staff 49: *st.*, *st.*
- Staff 50: *st.*, *st.*
- Staff 51: *st.*, *st.*
- Staff 52: *st.*, *st.*
- Staff 53: *st.*, *st.*
- Staff 54: *st.*, *st.*
- Staff 55: *st.*, *st.*
- Staff 56: *st.*, *st.*
- Staff 57: *st.*, *st.*
- Staff 58: *st.*, *st.*
- Staff 59: *st.*, *st.*
- Staff 60: *st.*, *st.*

Handwritten musical score for the second system, featuring multiple staves with complex notation and various annotations.

Annotations include:

- Staff 1: *st.*, *st.*
- Staff 2: *st.*, *st.*
- Staff 3: *st.*, *st.*
- Staff 4: *st.*, *st.*
- Staff 5: *st.*, *st.*
- Staff 6: *st.*, *st.*
- Staff 7: *st.*, *st.*
- Staff 8: *st.*, *st.*
- Staff 9: *st.*, *st.*
- Staff 10: *st.*, *st.*
- Staff 11: *st.*, *st.*
- Staff 12: *st.*, *st.*
- Staff 13: *st.*, *st.*
- Staff 14: *st.*, *st.*
- Staff 15: *st.*, *st.*
- Staff 16: *st.*, *st.*
- Staff 17: *st.*, *st.*
- Staff 18: *st.*, *st.*
- Staff 19: *st.*, *st.*
- Staff 20: *st.*, *st.*
- Staff 21: *st.*, *st.*
- Staff 22: *st.*, *st.*
- Staff 23: *st.*, *st.*
- Staff 24: *st.*, *st.*
- Staff 25: *st.*, *st.*
- Staff 26: *st.*, *st.*
- Staff 27: *st.*, *st.*
- Staff 28: *st.*, *st.*
- Staff 29: *st.*, *st.*
- Staff 30: *st.*, *st.*
- Staff 31: *st.*, *st.*
- Staff 32: *st.*, *st.*
- Staff 33: *st.*, *st.*
- Staff 34: *st.*, *st.*
- Staff 35: *st.*, *st.*
- Staff 36: *st.*, *st.*
- Staff 37: *st.*, *st.*
- Staff 38: *st.*, *st.*
- Staff 39: *st.*, *st.*
- Staff 40: *st.*, *st.*
- Staff 41: *st.*, *st.*
- Staff 42: *st.*, *st.*
- Staff 43: *st.*, *st.*
- Staff 44: *st.*, *st.*
- Staff 45: *st.*, *st.*
- Staff 46: *st.*, *st.*
- Staff 47: *st.*, *st.*
- Staff 48: *st.*, *st.*
- Staff 49: *st.*, *st.*
- Staff 50: *st.*, *st.*
- Staff 51: *st.*, *st.*
- Staff 52: *st.*, *st.*
- Staff 53: *st.*, *st.*
- Staff 54: *st.*, *st.*
- Staff 55: *st.*, *st.*
- Staff 56: *st.*, *st.*
- Staff 57: *st.*, *st.*
- Staff 58: *st.*, *st.*
- Staff 59: *st.*, *st.*
- Staff 60: *st.*, *st.*

Handwritten musical score for the first system. The top staff is a vocal line with notes and slurs, including dynamic markings like *mp*. The piano accompaniment consists of two staves with chords and melodic lines, some of which are crossed out with diagonal lines. The system concludes with a double bar line.

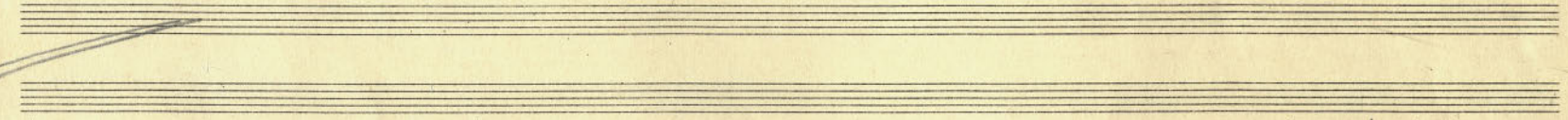
Handwritten musical score for the second system. The vocal line continues with notes and slurs. The piano accompaniment features a key signature change to two flats, indicated by a double bar line with a key signature change symbol. Above the piano part, there is a handwritten note: *ch. m. = aff. p.*. The system ends with a double bar line and a circled *R* marking.

Handwritten musical score for the first system, consisting of two systems of staves. The top system includes a vocal line with notes and rests, and a piano accompaniment line. Annotations include *ch. II = rla. II.* and *ch. II = rla. II.* with a large slur over the vocal line. The bottom system includes a piano accompaniment line with notes and rests, and a bass line with notes and rests. Annotations include *ch. II = rla. II.* and *ch. II = rla. II.* with a large slur over the piano accompaniment line.

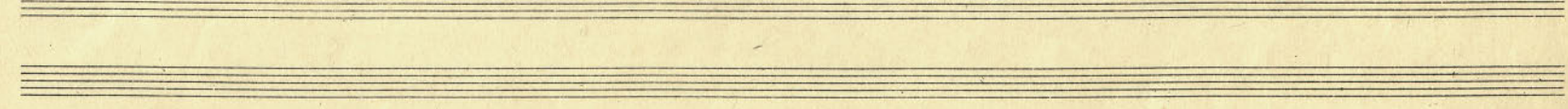
Handwritten musical score for the second system, consisting of two systems of staves. The top system includes a vocal line with notes and rests, and a piano accompaniment line. Annotations include *2. ed.* and *2. ff.* with a large slur over the vocal line. The bottom system includes a piano accompaniment line with notes and rests, and a bass line with notes and rests. Annotations include *ch. II = rla. II.* and *ch. II = rla. II.* with a large slur over the piano accompaniment line.

Fl. II = ob. I

Handwritten musical score for the first system. It consists of two staves for woodwinds. The top staff is for Flute II (Fl. II) and Oboe I (ob. I), with the instruction "Fl. II = ob. I" written above. The bottom staff is for Flute I (Fl. I) and Oboe II (ob. II). The music is written in a key with one sharp (F#) and a common time signature (C). The notation includes various rhythmic values, accidentals, and dynamic markings.



Handwritten musical score for the second system. It features a large woodwind section with multiple staves. The top staves are for Flute I (Fl. I) and Flute II (Fl. II), with the instruction "Fl. I = Fl. II" written above. Below these are staves for Oboe I (ob. I) and Oboe II (ob. II), with the instruction "ob. I = ob. II" written above. The bottom staves are for Clarinet I (cl. I) and Clarinet II (cl. II), with the instruction "cl. I = cl. II" written above. The music is written in a key with one sharp (F#) and a common time signature (C). The notation includes various rhythmic values, accidentals, and dynamic markings. There are also some handwritten notes and markings in the lower staves, such as "ob. II = cor. I" and "ob. I = cor. II".



Handwritten musical score for the first system, featuring multiple staves with complex notation, including notes, rests, and dynamic markings such as *ff*, *ch.*, and *st. I. p.*. The score includes various musical symbols like clefs, bar lines, and accidentals. A large circled 'C' is present on the right side of the system.

Handwritten musical score for the second system, continuing the composition. It features similar notation to the first system, with dynamic markings like *ff*, *ch.*, and *st. I. p.*. The bottom staves of this system are marked with diagonal lines, indicating they are to be played as a single line. The score concludes with the marking *pr. c.*

Handwritten musical score for the first system, consisting of eight staves. The notation includes various notes, rests, and dynamic markings. The first staff has a treble clef and a key signature of one sharp (F#). The second staff has a treble clef and a key signature of one sharp (F#). The third staff has a treble clef and a key signature of one sharp (F#). The fourth staff has a treble clef and a key signature of one sharp (F#). The fifth staff has a treble clef and a key signature of one sharp (F#). The sixth staff has a treble clef and a key signature of one sharp (F#). The seventh staff has a treble clef and a key signature of one sharp (F#). The eighth staff has a treble clef and a key signature of one sharp (F#).

Annotations in the first system include:

- ad lib.* (above the second staff)
- mf* (above the third staff)
- dim. poco a poco* (above the sixth staff)
- (mf)* (above the seventh staff)
- ab.* (below the eighth staff)

Handwritten musical score for the second system, consisting of eight staves. The notation includes various notes, rests, and dynamic markings. The first staff has a treble clef and a key signature of one sharp (F#). The second staff has a treble clef and a key signature of one sharp (F#). The third staff has a treble clef and a key signature of one sharp (F#). The fourth staff has a treble clef and a key signature of one sharp (F#). The fifth staff has a treble clef and a key signature of one sharp (F#). The sixth staff has a treble clef and a key signature of one sharp (F#). The seventh staff has a treble clef and a key signature of one sharp (F#). The eighth staff has a treble clef and a key signature of one sharp (F#).

Annotations in the second system include:

- mf* (above the third staff)
- mf* (above the sixth staff)
- mf* (above the seventh staff)
- mf* (above the eighth staff)



15

And. molto espressivo

tr

tr

Handwritten musical score for the first system. The piano part consists of a melodic line in the upper staves and a bass line in the lower staves. The melodic line begins with a piano (*p*) dynamic and features a series of notes with slurs. The bass line is marked with a tempo change from *rit.* to *al. rit.* and includes a dynamic marking of *p*. The system concludes with a fermata over the final notes.

rit. molto presto
 → *rit. ando*

+8-

Handwritten musical score for the second system. The piano part continues with a melodic line and a bass line. The melodic line features a series of notes with slurs, and the bass line maintains a steady eighth-note accompaniment. The system concludes with a fermata over the final notes.

→
rit. molto presto
rit. ando

+8-

Handwritten musical score for the first system. The piano staff (top) contains a melodic line with notes and rests, marked with dynamics *mf* and *dim.*. The bass staff (bottom) contains a rhythmic accompaniment with notes and rests, marked with *pp* and *dim.*. The system is divided into measures by vertical bar lines.

Handwritten musical score for the second system. The piano staff (top) continues the melodic line with notes and rests, marked with *pp*. The bass staff (bottom) continues the rhythmic accompaniment with notes and rests, marked with *pp* and *dim.*. The system is divided into measures by vertical bar lines.

Handwritten musical score for the first system. It consists of a single bass staff with a series of notes and rests. A dynamic marking of *ppp* is written above the staff. The notes include flats and sharps, and there are some handwritten annotations like *+8-* at the beginning.

Handwritten musical score for the second system, featuring multiple staves. The top staff is a violin part with a melodic line and dynamic markings *cl. b. espress.* and *mp*. The middle staves are piano accompaniment, with notes grouped by slurs and dynamic markings *ppp*. The bottom staff is a cello part with the annotation *3. tub. c. n.* and dynamic markings *ppp*. There are also some handwritten notes like *4. I* and *-pp* on the right side.

Handwritten musical score for the first system. It consists of a vocal line (top staff) and piano accompaniment (bottom staves). The vocal line begins with a rest, followed by a melodic phrase starting on a whole note. The piano accompaniment features a bass line with chords and a treble line with chords. Dynamic markings include *mf* (mezzo-forte) and *rit.* (ritardando). The system spans approximately 8 measures.

Handwritten musical score for the second system. It continues the piece with a vocal line and piano accompaniment. The vocal line features a triplet of eighth notes. The piano accompaniment includes a prominent bass line with sustained notes and chords. Dynamic markings include *mf* and *rit.*. The system spans approximately 8 measures.

Handwritten musical score on page 29, featuring a grand staff with five systems of staves. The notation includes various musical symbols and annotations:

- Staff 1 (Top):** Contains a melodic line with notes and accidentals. Above the staff, there are markings: $+8-$, as , $\#$, \flat , and \dagger .
- Staff 2:** Contains a wavy line representing a sustained sound or tremolo. Below the staff, the text $2 st. = 2 fl.$ is written.
- Staff 3:** Contains another wavy line. Below the staff, the text $st. I. = st. I.$ is written.
- Staff 4:** Features a complex rhythmic pattern with vertical lines and circles. Above the staff, the word *allegro* is written. Below the staff, the word *dim.* is written.
- Staff 5 (Bottom):** Contains a rhythmic pattern with vertical lines and circles. Above the staff, the word *pro.* is written. Below the staff, the word *pp* is written.

Continuation of the handwritten musical score on page 29, featuring a grand staff with five systems of staves. The notation includes various musical symbols and annotations:

- Staff 1 (Top):** Contains a melodic line with notes and accidentals. Above the staff, there are markings: $+8-$, $\#$, \flat , and \dagger .
- Staff 2:** Contains a wavy line representing a sustained sound or tremolo. Below the staff, the text $4 st. = 2 fl.$ is written.
- Staff 3:** Contains a melodic line with notes and accidentals. Below the staff, the text $st. II, 2 fl.$ is written.
- Staff 4:** Contains a wavy line representing a sustained sound or tremolo. Below the staff, the text $4 st. fl. = 2 fl. 8$ is written.

Handwritten musical score for the first system, consisting of five staves. The top staff contains a melodic line with various accidentals and dynamics. The second and third staves contain wavy lines, likely representing sustained notes or tremolos. The bottom two staves contain rhythmic notation with vertical lines and beams, and some handwritten notes like "p.c." and "pp".

Handwritten musical score for the second system, also consisting of five staves. The top staff features a melodic line with a circled "B" above it and various accidentals. The second and third staves contain wavy lines. The bottom two staves contain rhythmic notation and some handwritten notes, including "mf" and "4 cor.". There are also some notes at the bottom of the system: "re", "mf", "sta, sta. = sta. P", and "st. = sta. P".

Handwritten musical score for the first system, numbered 19. It features a grand staff with five staves. The top staff is in treble clef with a 2/4 time signature. The second and third staves are in alto clef. The bottom two staves are in bass clef. The score includes various musical notations such as notes, rests, and accidentals. A circled number '19' is written above the first measure. There are handwritten annotations: '2. st. 4/8' in the first measure, and '2. st. = 4/8' and '3. st. = 4/8' in the second measure. A large bracket spans the first two measures of the top staff. The bottom staff has a 'tr' marking under the first measure.

Handwritten musical score for the second system, continuing from the first. It features a grand staff with five staves. The top staff is in treble clef. The second and third staves are in alto clef. The bottom two staves are in bass clef. The score includes various musical notations such as notes, rests, and accidentals. There are handwritten annotations: '2. st. = 4/8' and '3. st. = 4/8' in the second measure, and '2. st. = 4/8' in the fourth measure. A large bracket spans the first two measures of the top staff. The bottom staff has a 'tr' marking under the first measure.

Handwritten musical score for the first system. It consists of five staves. The top staff has a treble clef and contains a key signature of one sharp (F#) and a time signature of 3/4. The notation includes various notes, rests, and wavy lines. Annotations include "pizz = ab. I. 8 -" and "a2". The second staff has a bass clef and contains notes and rests, with annotations "2 ab. = ab. I." and "a. d. = ab. I. 8 -". The third and fourth staves contain wavy lines. The fifth staff has a bass clef and contains notes and rests, with an annotation "2 cor. #1".

Handwritten musical score for the second system, continuing from the first. It consists of five staves. The top staff has a treble clef and contains notes and rests, with annotations "d. I. = ab. I. 8 -" and "ab. I. = ab. I. 5 -". The second staff has a bass clef and contains notes and rests, with an annotation "2 cor. = ab. I.". The third and fourth staves contain wavy lines. The fifth staff has a bass clef and contains notes and rests, with an annotation "tr. I." and "2 cor. #1".

Handwritten musical score for the first system, consisting of 11 staves. The notation includes treble and bass clefs, various note values, rests, and dynamic markings such as *mf* and *ff*. There are several large, hand-drawn scribbles in the upper staves. The bottom two staves feature complex rhythmic patterns with many notes and stems.

Handwritten musical score for the second system, also consisting of 11 staves. This system continues the musical composition with similar notation to the first system, including clefs, notes, rests, and dynamic markings. The bottom two staves show intricate rhythmic figures. The page concludes with a double bar line and a final downward-pointing arrow.

Handwritten musical score for the first system, consisting of five staves. The notation includes various rhythmic patterns, accidentals, and dynamic markings. The first staff has a tempo marking of *allegro* and a dynamic marking of *mf*. The second staff has a dynamic marking of *mf*. The third staff has a dynamic marking of *mf*. The fourth staff has a dynamic marking of *mf*. The fifth staff has a dynamic marking of *mf*. The score is divided into four measures.

Handwritten musical score for the second system, consisting of five staves. The notation includes various rhythmic patterns, accidentals, and dynamic markings. The first staff has a dynamic marking of *mf*. The second staff has a dynamic marking of *mf*. The third staff has a dynamic marking of *mf*. The fourth staff has a dynamic marking of *mf*. The fifth staff has a dynamic marking of *mf*. The score is divided into four measures.

*) morda od tukaj dalje do naslednjega p (sub.) brez pavk

21 +8-

Handwritten musical score for system 21, measures 1-4. The score includes a treble clef staff with notes and rests, a bass clef staff with notes and rests, and several lower staves with various markings and symbols. The notation is dense and includes many accidentals and dynamic markings.

Handwritten musical score for system 22, measures 1-4. The score includes a treble clef staff with notes and rests, a bass clef staff with notes and rests, and several lower staves with various markings and symbols. The notation is dense and includes many accidentals and dynamic markings.

2^{fl.}

Handwritten musical score for the first system, measures 1-8. The score includes a woodwind section with two flutes (2^{fl.}), a string section with five staves, and a piano section with two staves. The piano part features a melodic line with triplets and a bass line with chords. Dynamic markings include *p* and *pizz.*

Handwritten musical score for the second system, measures 9-16. The score continues the woodwind, string, and piano sections from the first system. The piano part has more complex rhythmic patterns and triplets. Dynamic markings include *p*.

Handwritten musical score for page 38. The score consists of several staves. The top staves contain notes and rests, with some staves having large, stylized markings that look like parentheses or loops. The bottom staves contain more complex notation, including triplets and dynamic markings such as *mp*, *f*, and *resc.*. There are also some handwritten annotations like "tamb. pice." and "Stallo".

Handwritten musical score for page 39. The score continues from the previous page. It features similar notation to page 38, with multiple staves and complex rhythmic patterns. There are some large, stylized markings and dynamic markings like *mp* and *f*. The notation is dense and appears to be a continuation of a piece.

marcatissimo

Handwritten musical score for the first system. The piano part consists of a melodic line with eighth and sixteenth notes, and a bass line with sustained notes. The tempo marking is *marcatissimo*.

23

picc. = ob. I, 8^a
2 fl. = ob. II
2 ob. = ob. III, 4^a
2 cl. = ob. IV, 8^a
2 cor. = ob. V, 8^a
2 cor. = ob. VI
2 cor. = ob. VII
2 cor. = ob. VIII
2 cor. = ob. IX
2 cor. = ob. X
2 cor. = ob. XI
2 cor. = ob. XII
2 cor. = ob. XIII
2 cor. = ob. XIV
2 cor. = ob. XV
2 cor. = ob. XVI
2 cor. = ob. XVII
2 cor. = ob. XVIII
2 cor. = ob. XIX
2 cor. = ob. XX
2 cor. = ob. XXI
2 cor. = ob. XXII
2 cor. = ob. XXIII
2 cor. = ob. XXIV
2 cor. = ob. XXV
2 cor. = ob. XXVI
2 cor. = ob. XXVII
2 cor. = ob. XXVIII
2 cor. = ob. XXIX
2 cor. = ob. XXX

Handwritten musical score for the second system. It features a complex orchestral arrangement with many instruments, including woodwinds and strings. The piano part is also present. The tempo marking is *ff sempre*.

Handwritten musical score for the first system. It consists of nine staves. The top five staves contain wavy lines, likely representing sustained notes or tremolos. The bottom four staves contain rhythmic notation with stems, beams, and various accidentals (sharps, naturals). There are some handwritten annotations in the right-hand side of the system, including what appears to be a measure rest and some illegible text.

Handwritten musical score for the second system. It consists of nine staves. The top seven staves contain notes, many of which are crossed out with a large 'X'. The bottom two staves contain rhythmic notation with stems, beams, and various accidentals. There are some handwritten annotations in the left-hand side of the system, including 'a2', 'rta. + p-', and '+ p-'. The right-hand side of the system shows some notes and rests.

Handwritten musical score on ten staves. The notation includes various notes, rests, and accidentals. There are some scribbles and corrections in the lower right portion of the score.



Primož Ramani

Ljubljana, 28. XII. 1955.