

Photo Album

Index

PRODAJA PPI/PRS

Stiskalnice:

- HKS
- DA
- DE Žel. Ravne

Škarje LUDAL

1	13
2	14
3	15
4	16
5	17
6	18
7	19
8	20
9	21
10	22
11	23
12	24

Upute:

Sretne uspomene se čuvaju svježe i čiste.

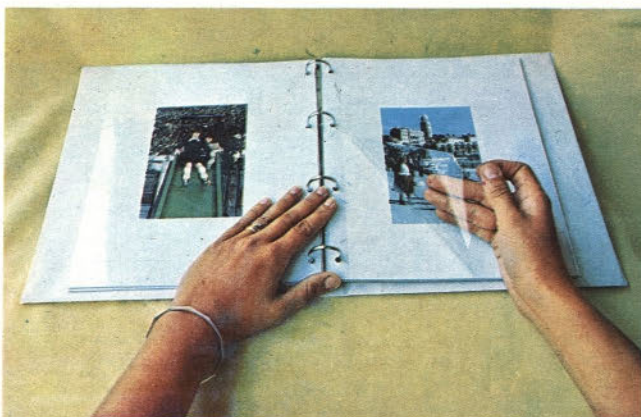
Slike su zaštićene od prašine i ogrebotina jednostavnim načinom držanjem pod prozirnim omotačem.



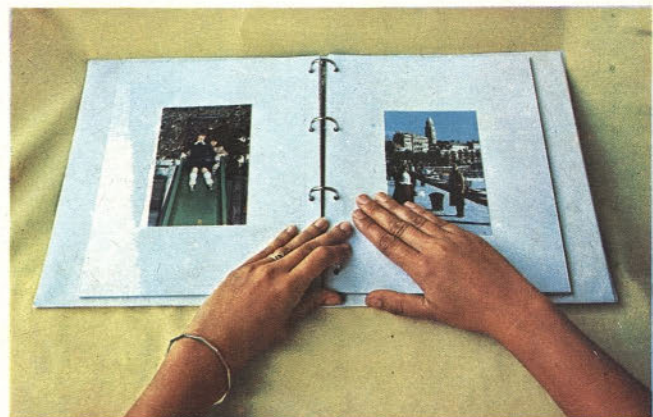
»FOTO« ZAGREB



Jugoplastika
SPLIT



Podignite lagano prozirni zaštitni pokrivač sa kartonske plohe počevši od proreza uz metalni držač. Nemojte ga podići sasvim nego se zaustavite 1 cm od vanjskog ruba kako biste ga mogli ravnomjerno rasprostrijeti nakon slaganja slika.



Paralelne linije na kartonu pomažu da se slike ispravno polože.

Kad se slike polože vratite, prozirni zaštitni pokrivač i čvrsto ga pritisnite.

Pazite da ne dodirujete ljepljivu kartonsku površinu ili da na nju padne prašina.

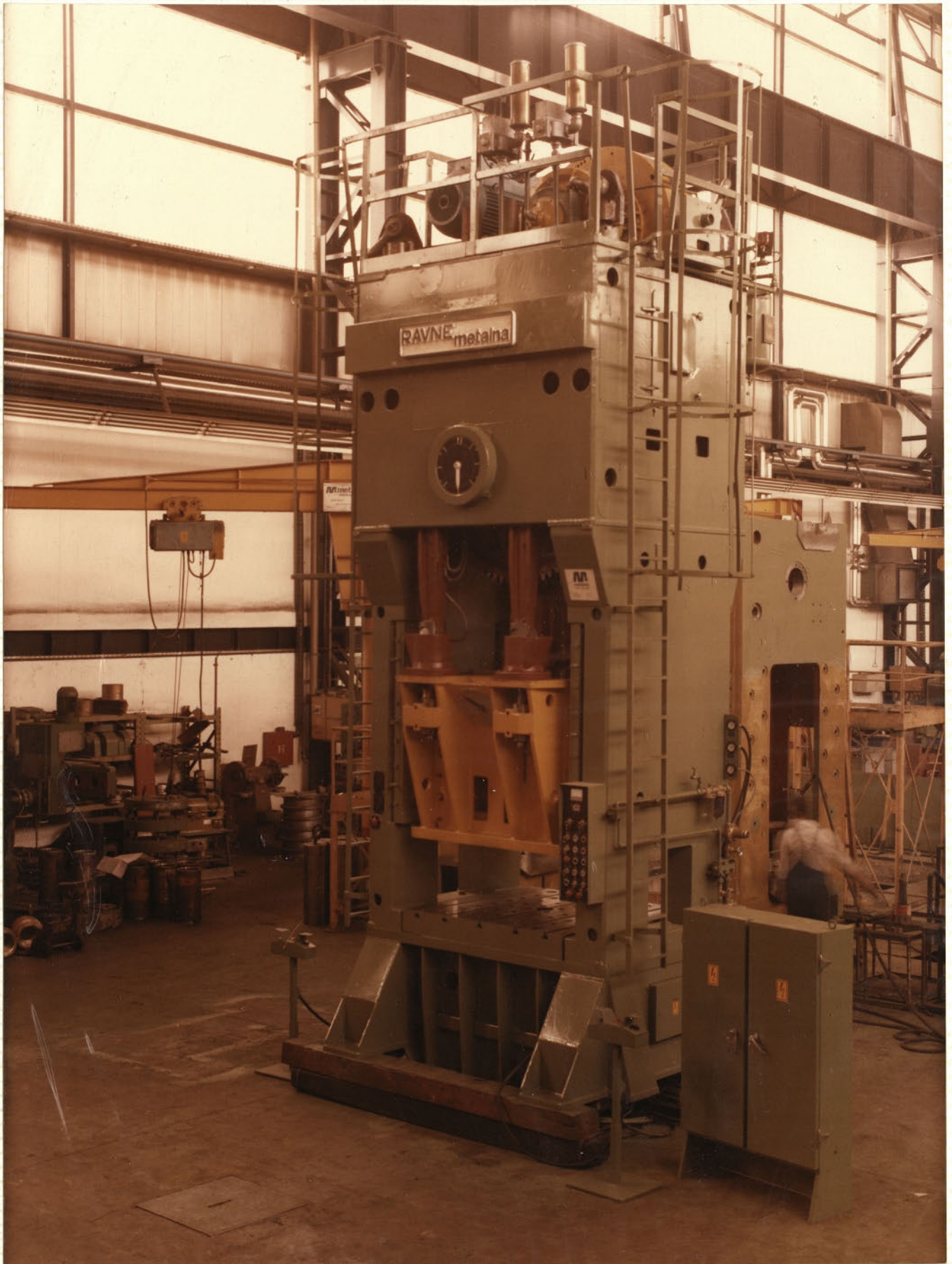
Prozirni zaštitni pokrivač se ne smije gužvati.

5 9/18 Metelma



0 2012/3193

DA STISKALNICA



HKS #iskolwica



KES stiskalica



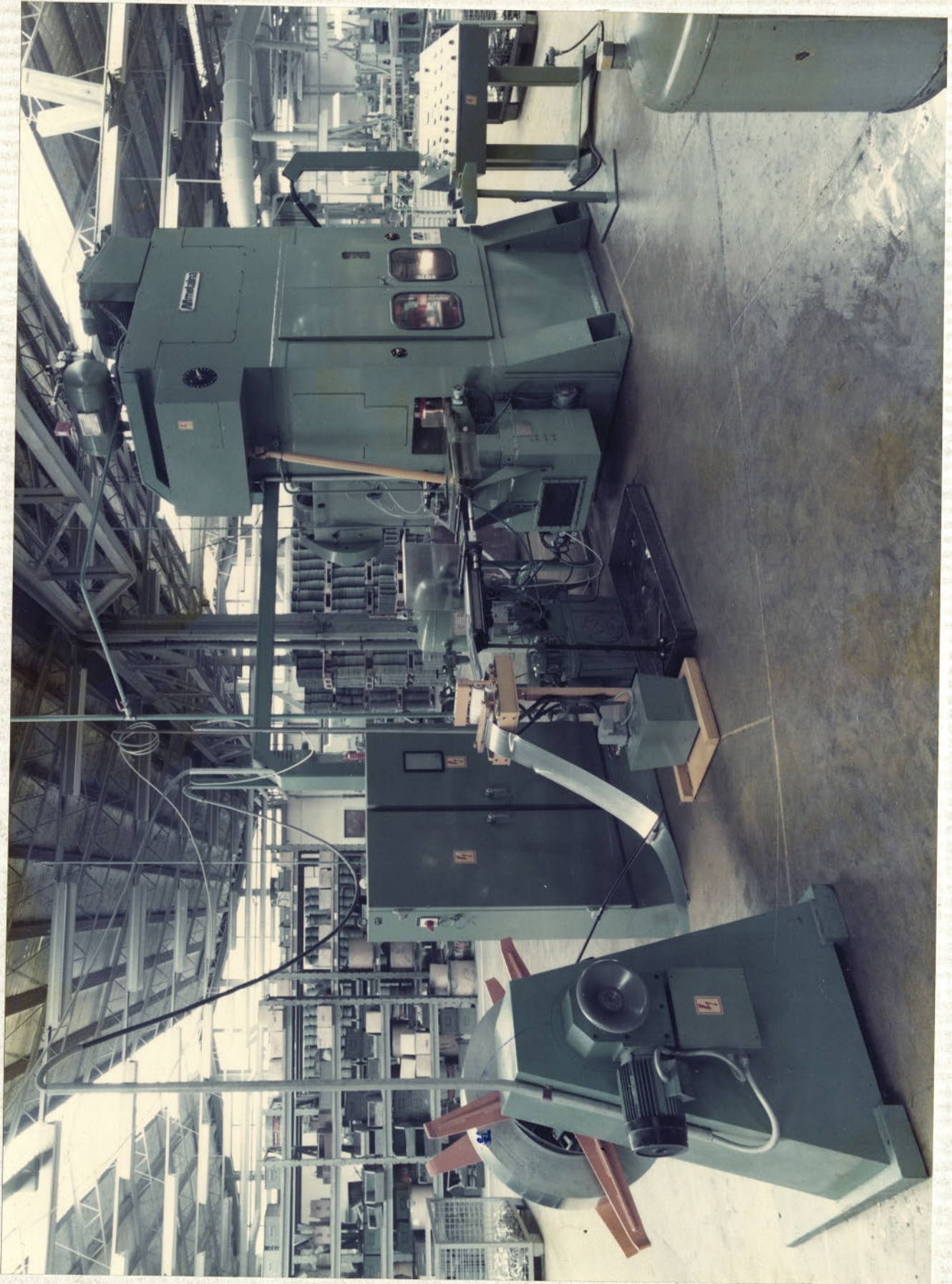


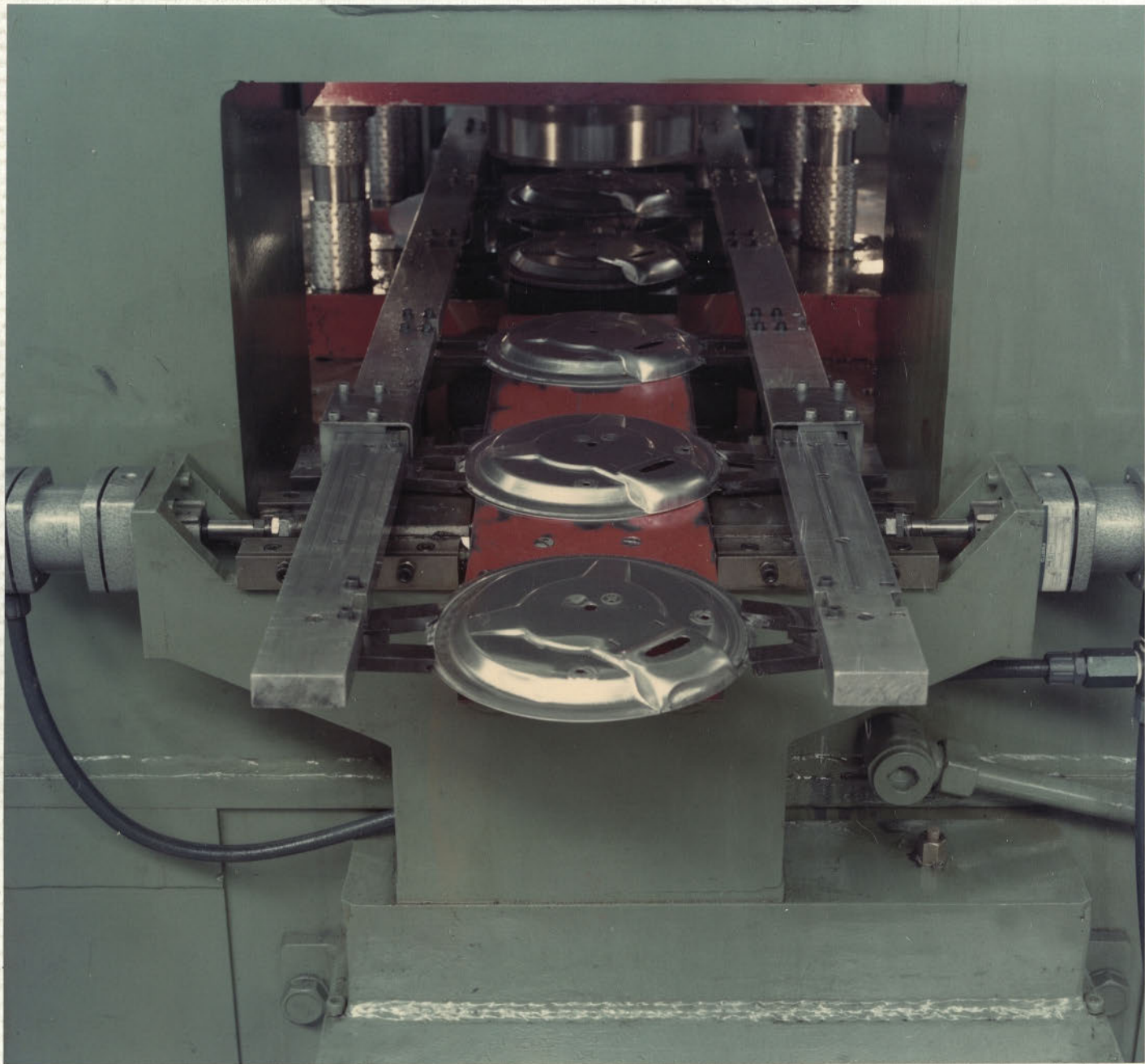
M:metalna

M:metalna

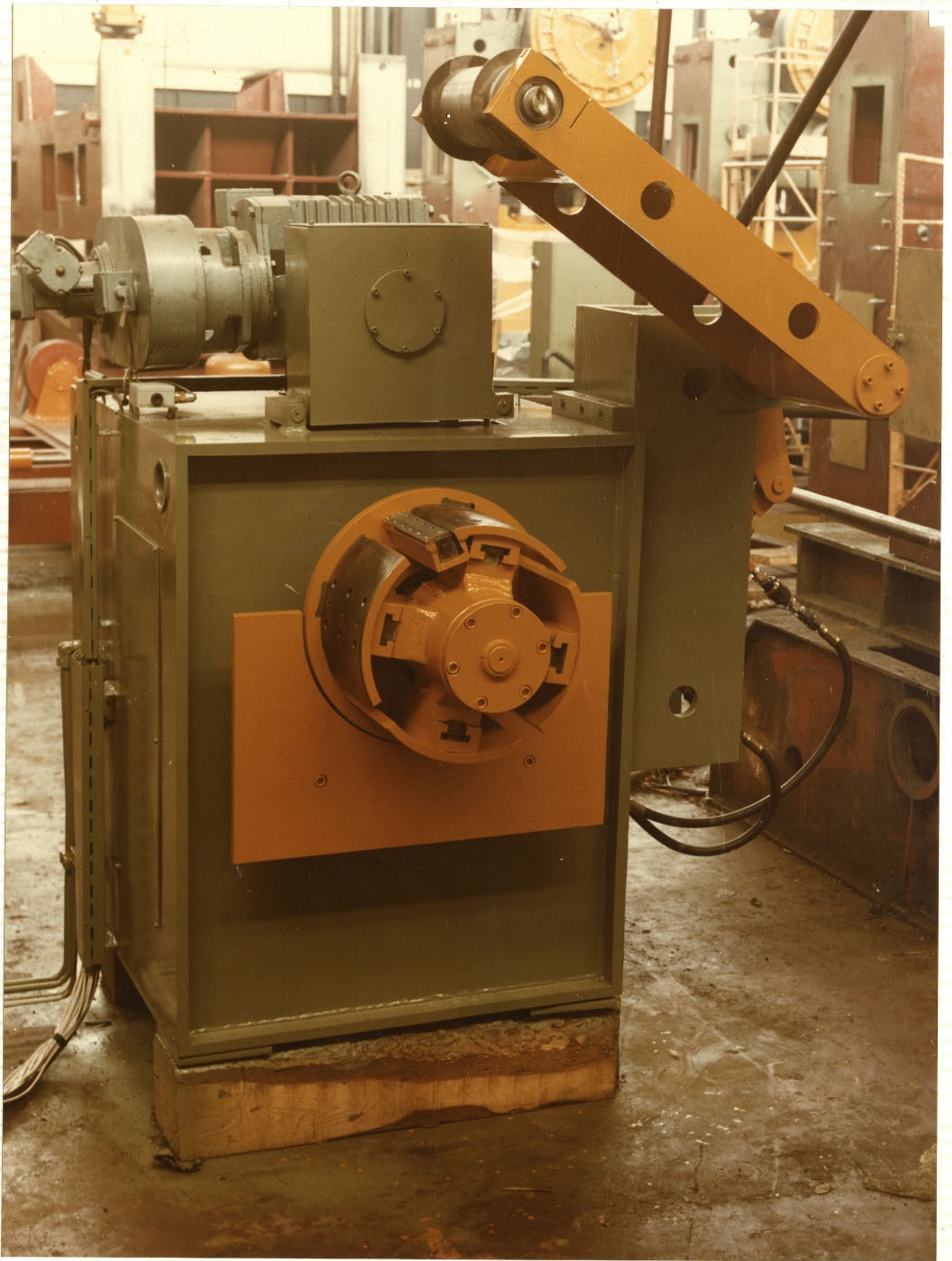
M:metalna

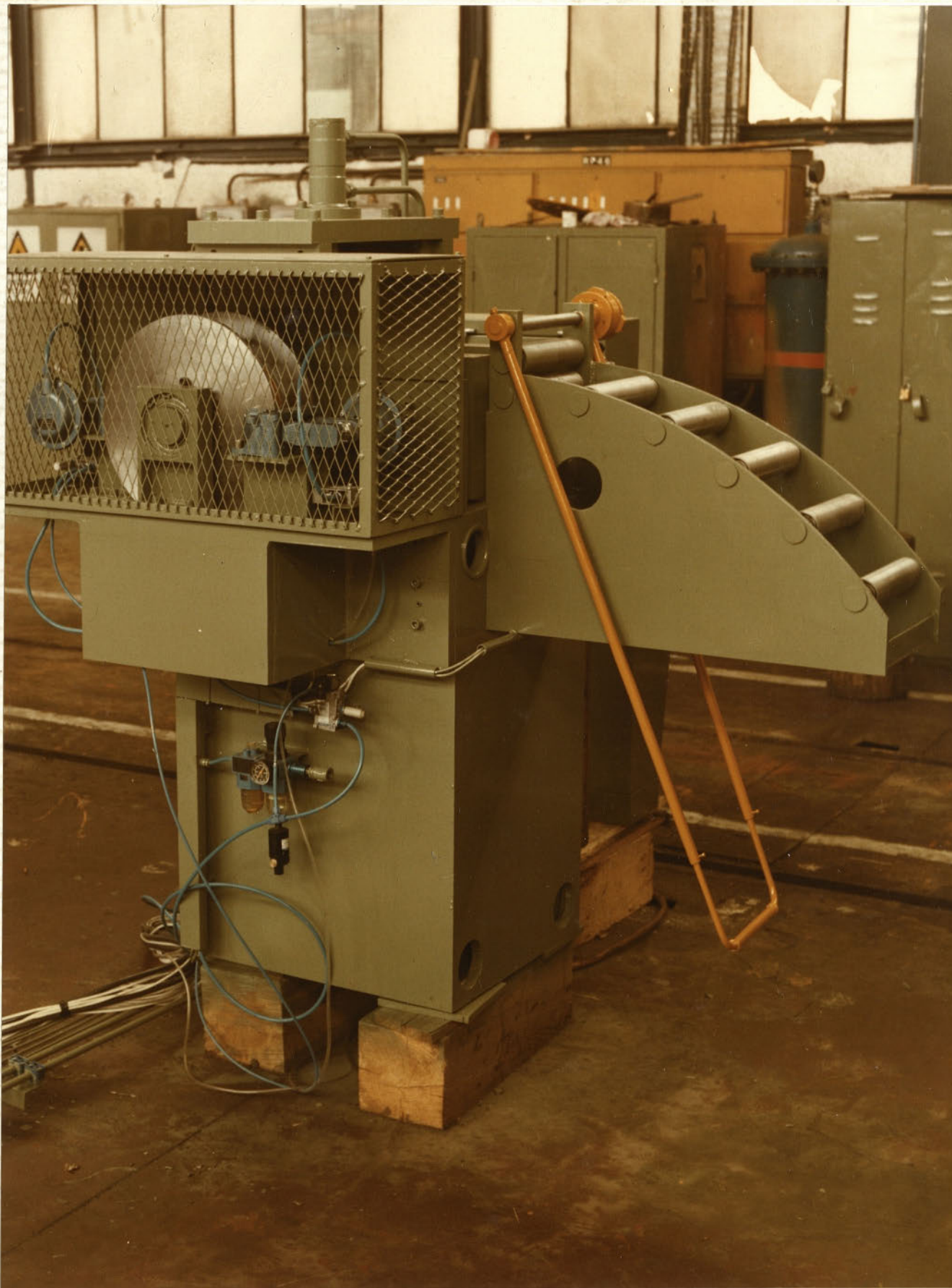
Livija z DRS 125
ETA Cerklaro





ALPOS Šećfar





Livija z DRS-V-315
R.K. Izg.
BIAM 88





ROMUNIJA DRS 315

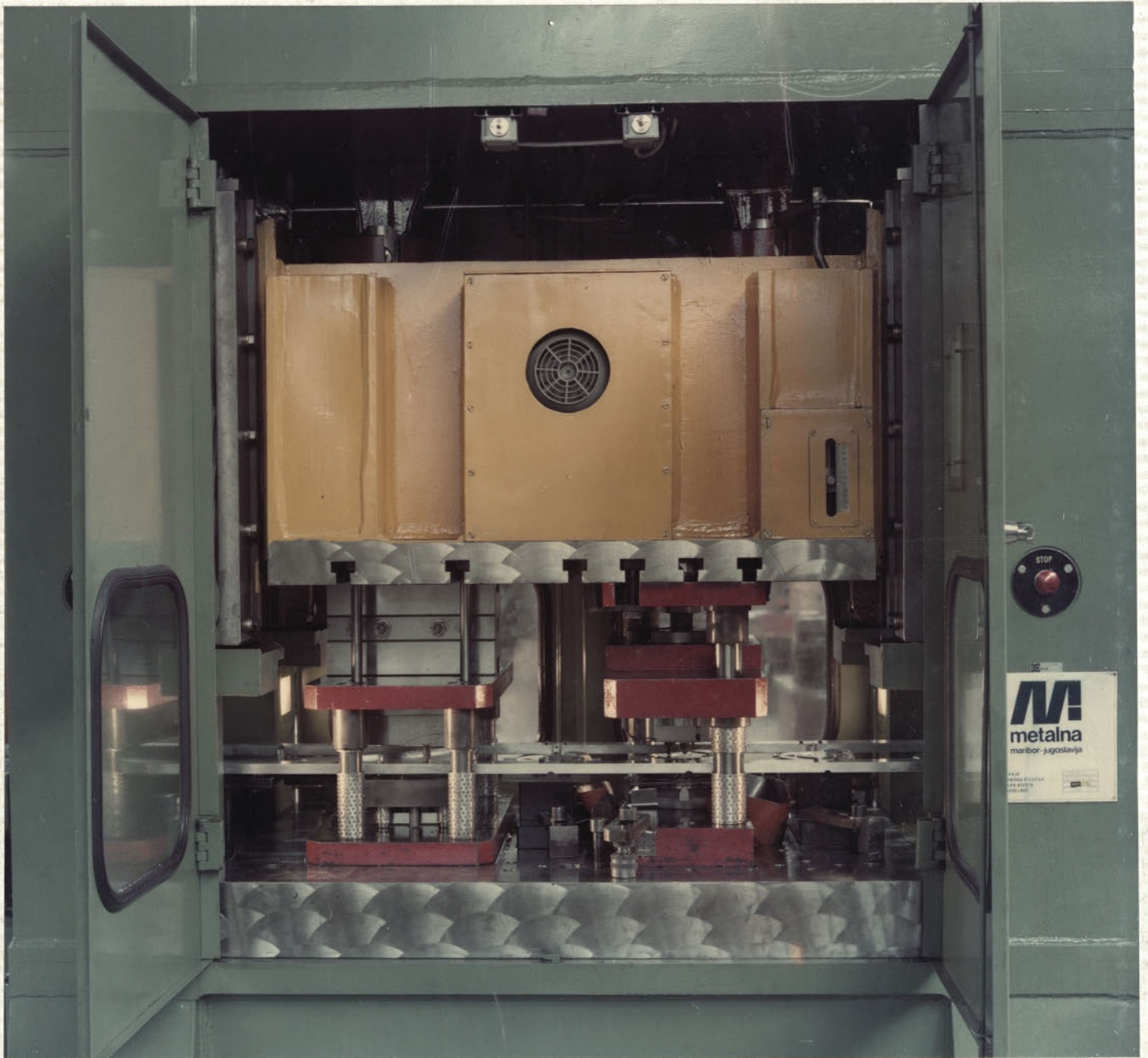


ROMUNIA DRS 818

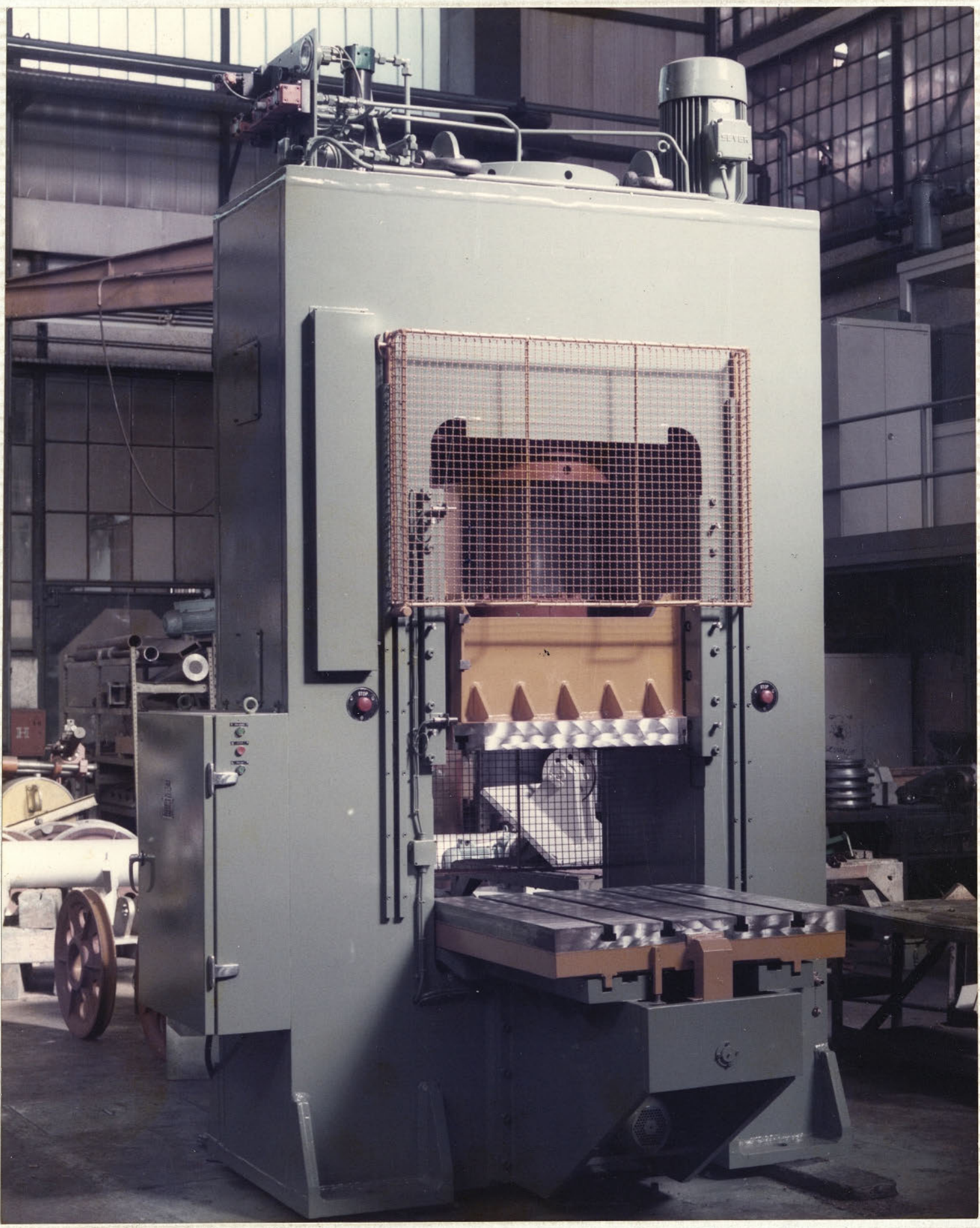


M:metalna

KES 250? (Romunija)



V NHS 400
FAMOS Hrasnica



Boris Kidrič LUKAVAC
HSH 400



DRS 125 R.K. Zg.

125 H2H
000

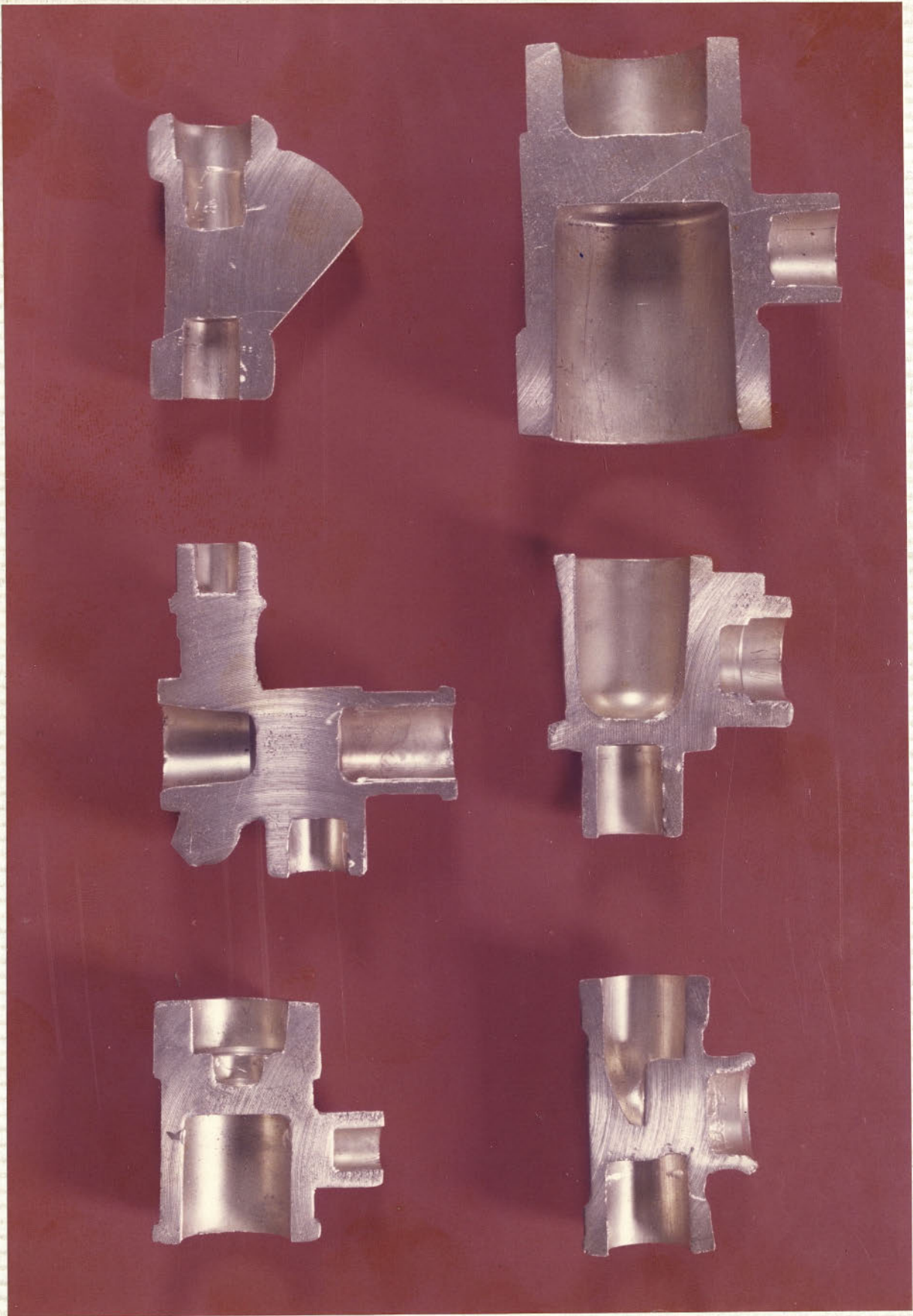


Linija DRS-V-100
POBJEDA Tešanj

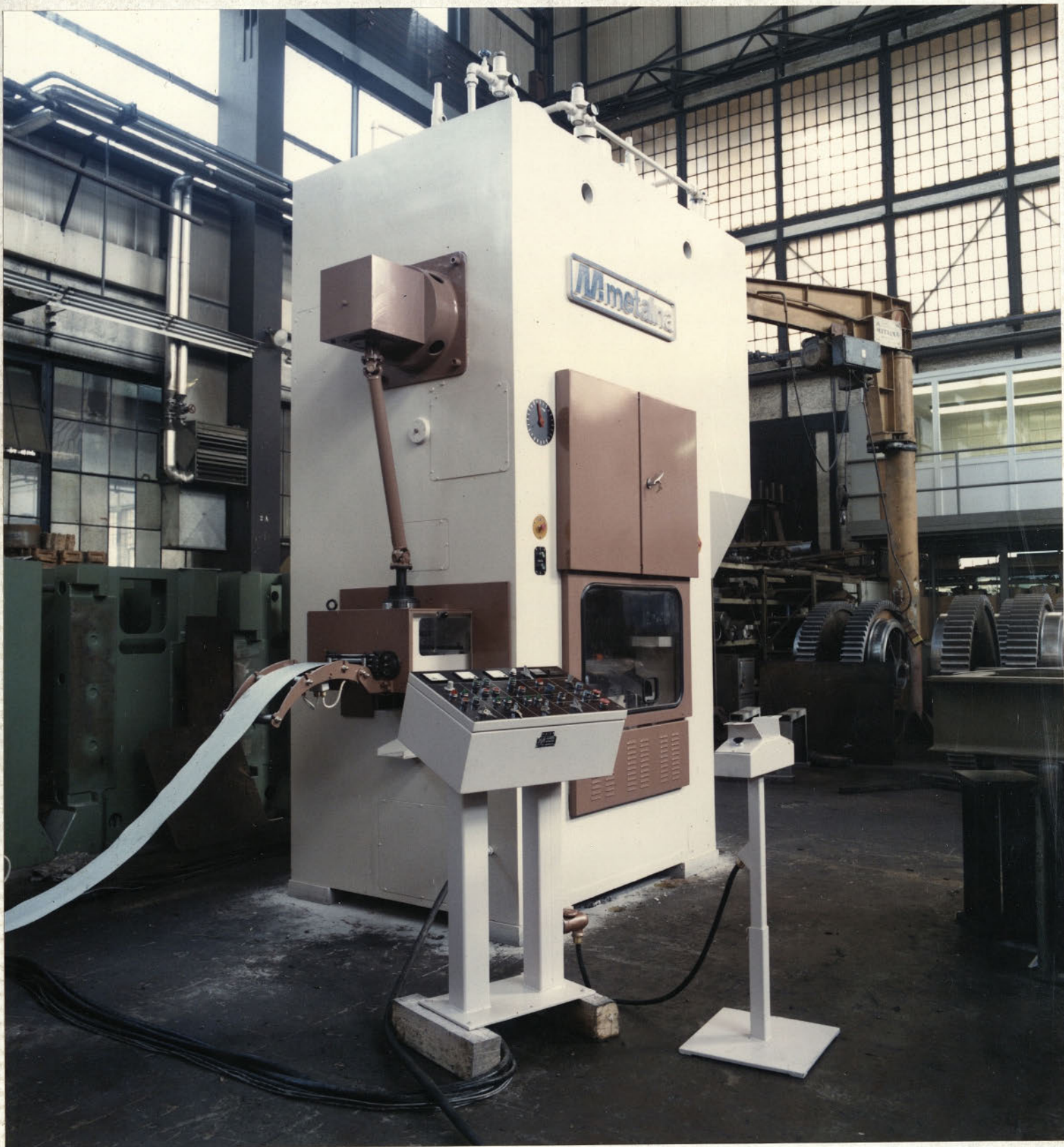


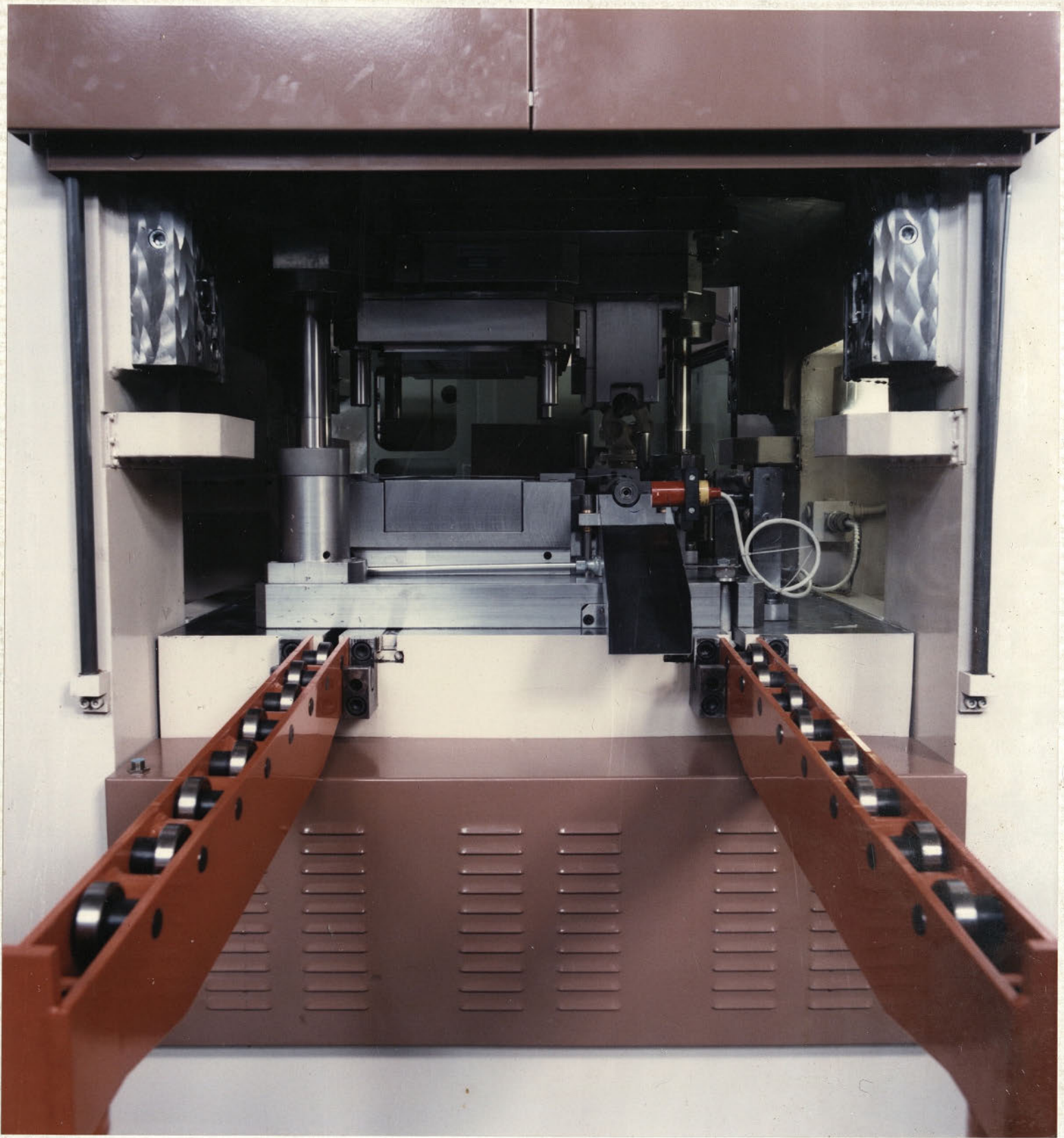
Linija za votlo kovanje barvuin kovin s HKS 250
KRUSNIK

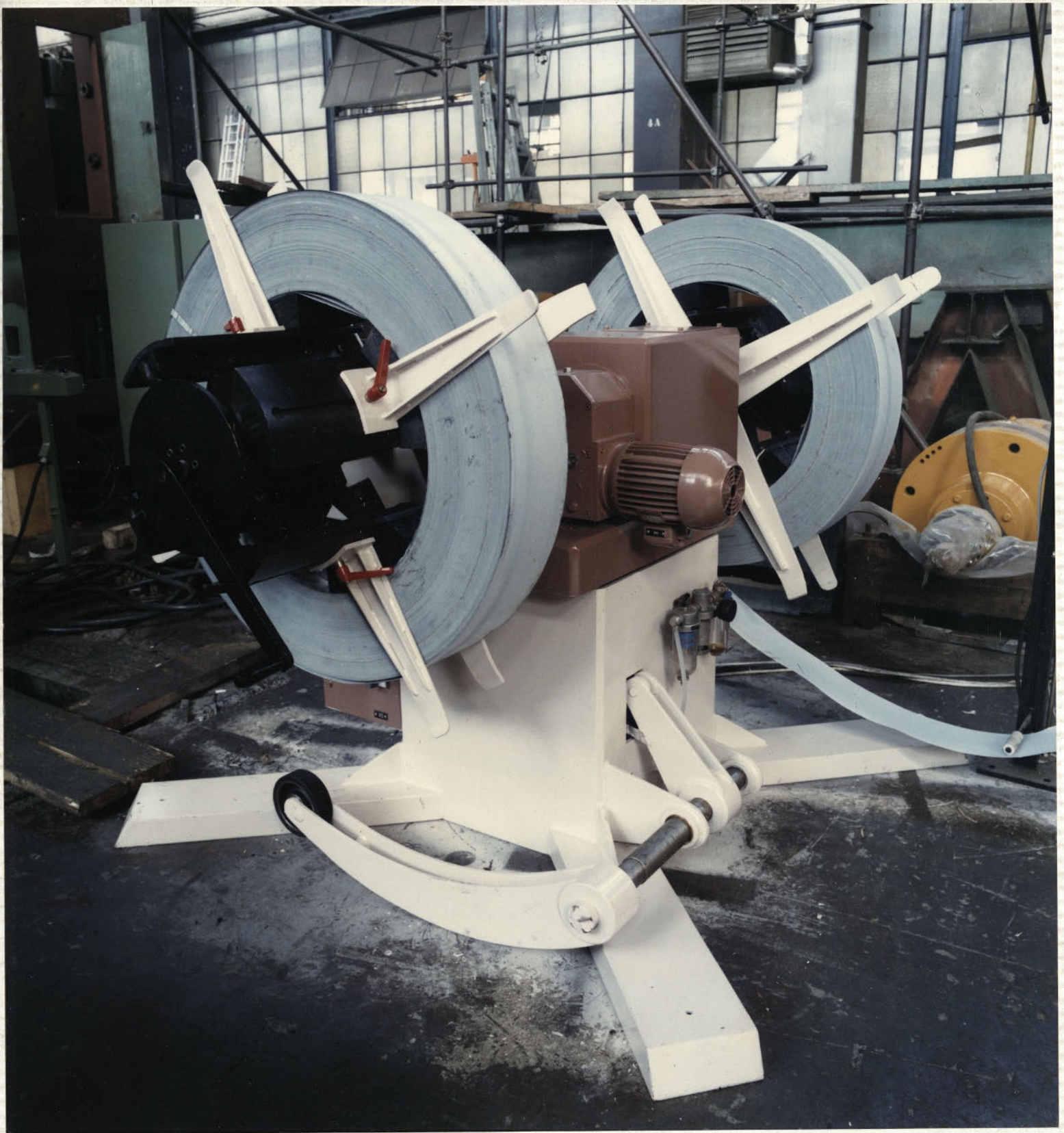




Liniija z DRS-V-160-EMO 8f
POBJEDA Tesamj



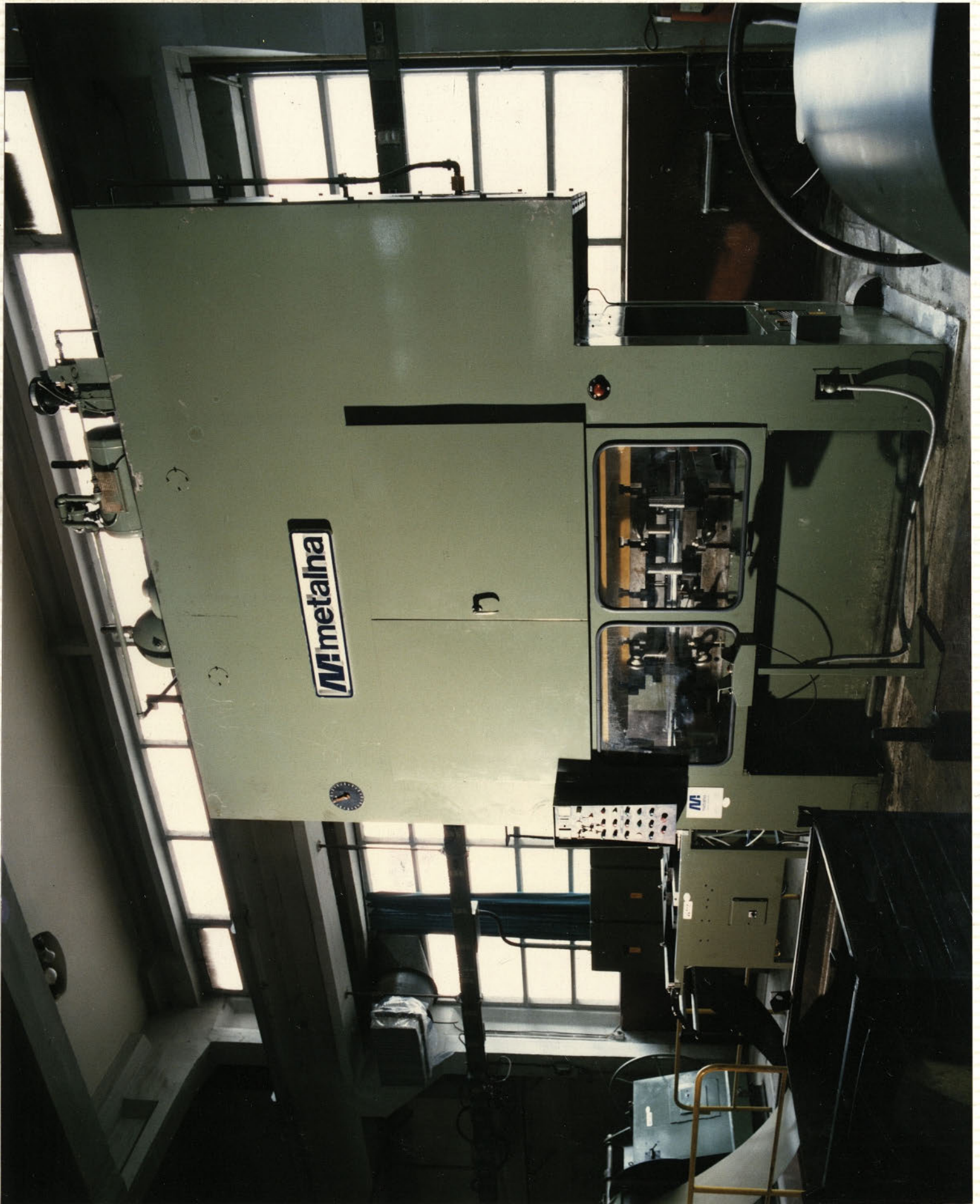




Liniija za predelavo pločevine z DRS
ul. JANJK Pula



Livija za predelavo pločevine z DRS
V. JANIKU Puka





RAVNE metalna

DE 400-2740 1530

 SLOVENSKE ŽELEZ
ŽELEZARNA RI
n. s. l. o.
RAVNE NA KORO
SLOVENIJA - JUGOS

PRESA DE-

Sila prerasovanja 25 mm isped DMT.
Hod mlaja
Broj hodova mlaja
Regulacija mlaja
Razmak između mlaja i stola
Hod dole - reg. gore
Razmak između stabova
Dimenzije mlaja
Dimenzije stola
Snaga glavnog motora kW
Max. visina prese iznad O.O.
Sila izbočava u stolu kod 6 bara
Hod izbočava
Broj hodova mlaja
Snaga glavnog motora
Masa prese
Preša

ŠKARJE LUDAL Teševice

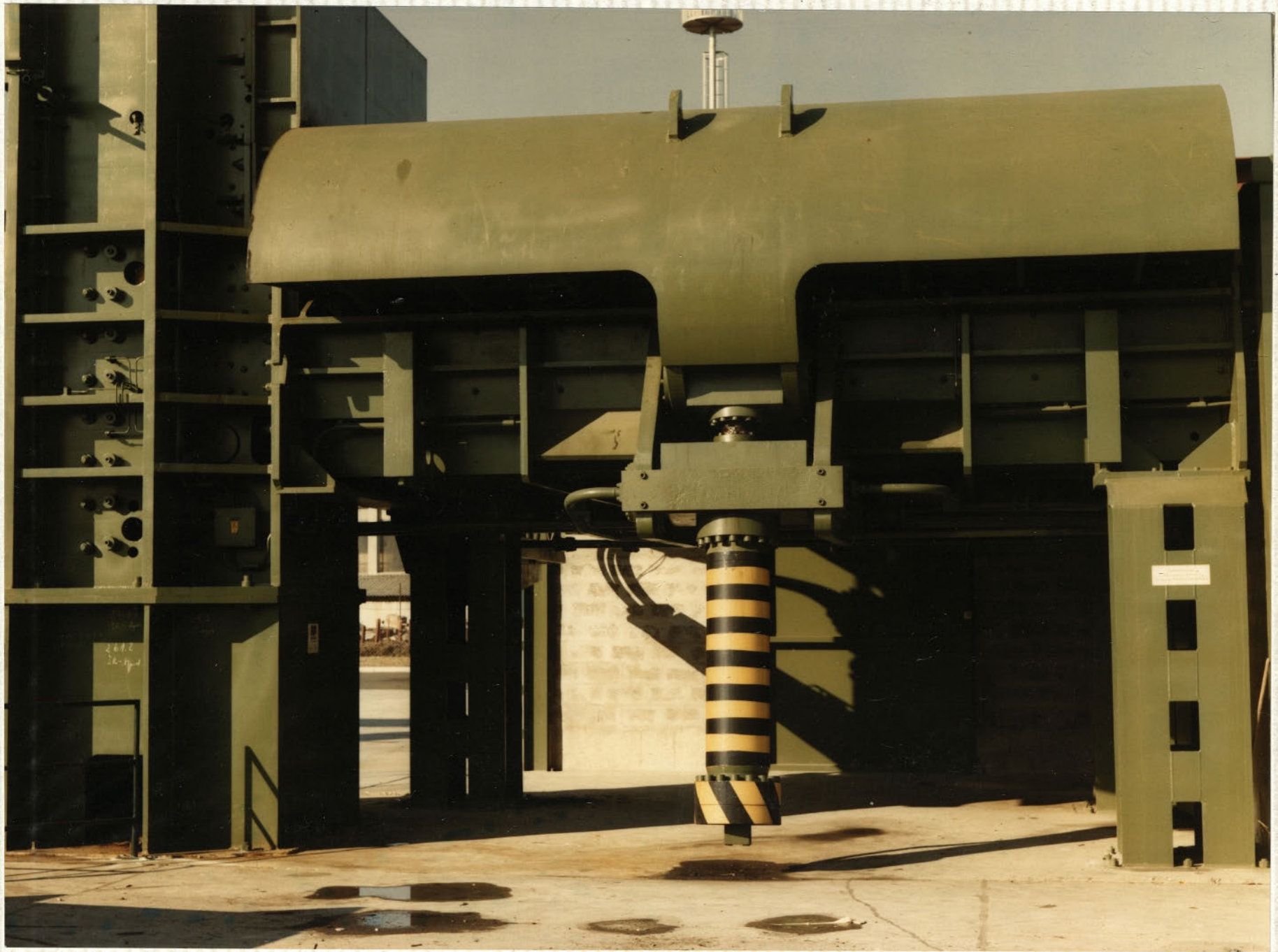




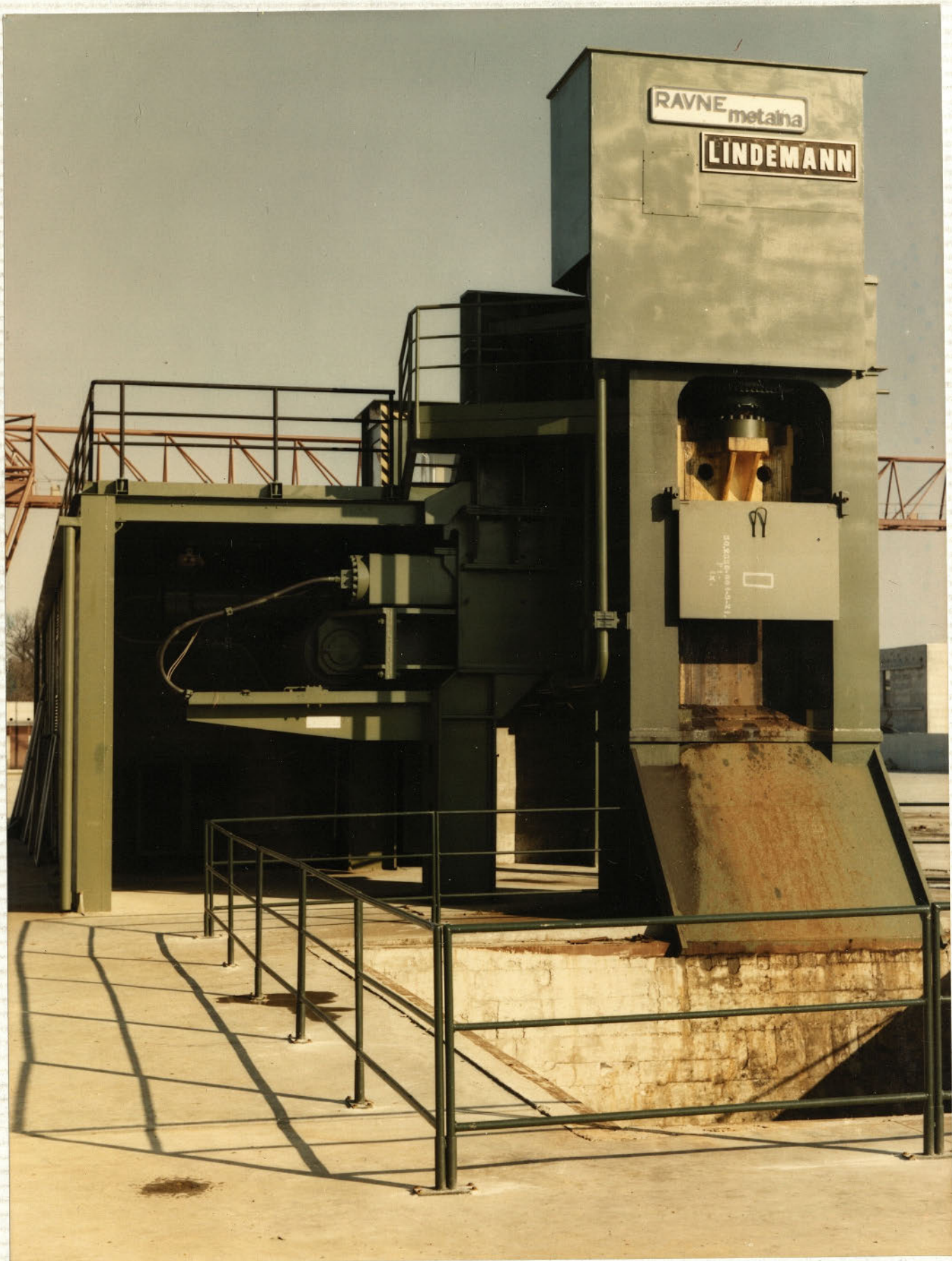
ŠKARJE Ludal-
Simovna

ŠKARJE - 2002 - 2003





Škarje - Surovina



Surovina

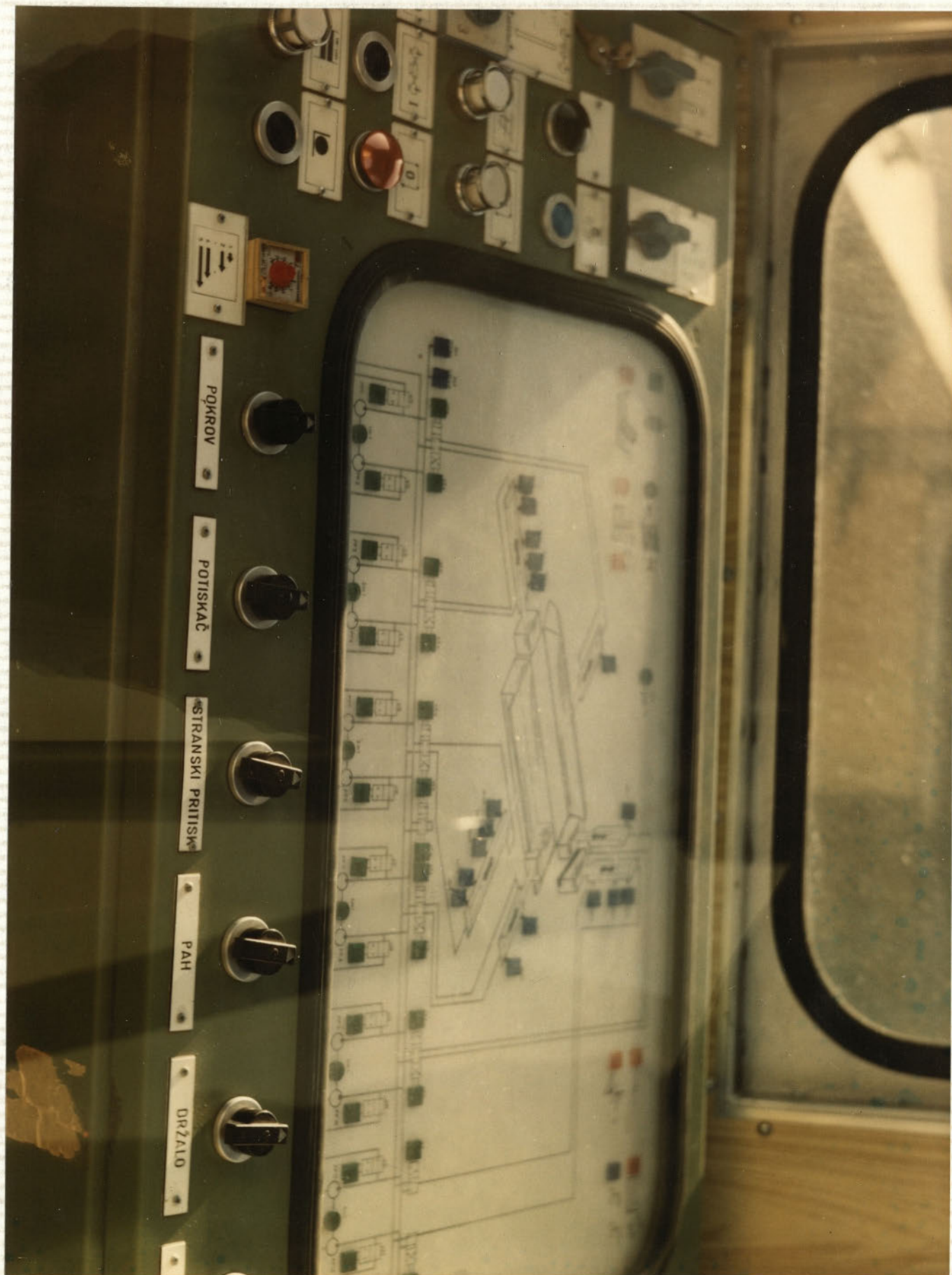


PAKETIRKA - Suoviva



Paketirka HPH-3-160
Suoviva





ŠKADJE KU 810
ZEL. Sivak





RG 1000 v 1LR Lesak



RS 400 n° LR 1200

RS 400 n° LR 1200

