

Allo' moderato.

Credo.

Violino 1^{mo}

Violino 2^{do}

Viola

Canto

Alto

Tenore

Basso

Corni in B

Clarinetti in B

Clarini in B

Timp.

Organo e Basso

Cre-do in u-num Deum patrem om-ni-po-tentem factorem coe-licae visibilium omnium et invisibilium et in

Corni

Clarineti

Clarin

Timp.

omnia sac - cula ante omnia sac - cula De - um De

Corni

Clarinetti

Clarini

Timp.

De - o - lu - men de lu - mine De - um ve - rum de De - o ve - ro de De - o ve - ro
de lu - mine De - um ve - rum de De - o ve - ro de De - o ve - ro
De - o - lu - men de lu - - mine

Corni

Clarinetti

Clarini

Timp.

ge - - ni - tum non factum, consubstanti - a lem patri per quem omnia facta sunt o - - nia facta sunt qui propter
per quem om - - nia facta sunt, om - - nia facta sunt qui propter
per quem omnia facta sunt
ge - - ni - tum non factum consubstanti - a - lem patri per quem omnia facta sunt om - - nia facta sunt qui propter

Adagio

Musical staff with treble clef, key signature of two flats, and 3/4 time signature. It begins with a dynamic marking of *p.* and contains several measures of music.

Musical staff with treble clef, key signature of two flats, and 3/4 time signature. It begins with a dynamic marking of *p.* and contains several measures of music.

Musical staff with bass clef, key signature of two flats, and 3/4 time signature. It begins with a dynamic marking of *p.* and contains several measures of music.

Musical staff with bass clef, key signature of two flats, and 3/4 time signature. It contains several measures of music, including the Latin text: *in car-natus est de o-pi-ri-tu san-cto ex Ma-ria vir-gi-ne*.

Musical staff with bass clef, key signature of two flats, and 3/4 time signature. It contains several measures of music.

Musical staff with bass clef, key signature of two flats, and 3/4 time signature. It contains several measures of music.

Musical staff with bass clef, key signature of two flats, and 3/4 time signature. It contains several measures of music.

Musical staff with treble clef, key signature of two flats, and 3/4 time signature. It is labeled *Corni in F* and contains several measures of music.

Musical staff with treble clef, key signature of two flats, and 3/4 time signature. It contains several measures of music.

Musical staff with bass clef, key signature of two flats, and 3/4 time signature. It contains several measures of music.

Musical staff with bass clef, key signature of two flats, and 3/4 time signature. It contains several measures of music, including the text *Fagotto* and various dynamic markings.

Musical staff with bass clef, key signature of two flats, and 3/4 time signature. It is labeled *Fagotto* and contains several measures of music.

Handwritten musical score for strings and woodwinds. The score consists of six staves. The top two staves are for Violins I and II, the next two for Violas and Cellos/Double Basses. The bottom two staves are for Clarinet I and Clarinet II. The music is in a major key with a common time signature. There are dynamic markings such as *p.* and *f.* throughout the score.

et incarnatus est de spiritu sancto ex Maria virgine ex Maria virgine, et homo

Handwritten musical score for Solo. The staff is in a lower register, likely for a voice or a solo instrument. It begins with the word *Solo* and contains the text *et in car-natus est de spi-ri-tu sancto*. The music is in a major key with a common time signature.

Corni
Clarinetti
Clarin

Handwritten musical score for Horns and Clarinets. The top staff is for Horns, starting with a *p.* dynamic marking. The bottom staff is for Clarinets. Both staves are in a major key with a common time signature.

Handwritten musical score for Organ. The staff is in a lower register and contains the text *Tasto* and *Org.*. The music is in a major key with a common time signature.

Handwritten musical score for Organ. The staff is in a lower register and contains the text *Tasto* and *Org.*. The music is in a major key with a common time signature. There are some numerical markings above the notes, possibly indicating fingerings or ornaments.

Handwritten musical score for a choral piece, likely a Mass or Requiem, featuring Latin lyrics. The score is written on multiple staves, including vocal parts and piano accompaniment.

The lyrics are: *fac-tus est etiam pro nobis sub Pontio Pi-lato passus, cruci-fixus et se-pultus est sub Pontio*

The score includes various musical notations, such as clefs, notes, rests, and dynamic markings (e.g., *p.*, *cres.*, *for.*).

de- *ter-* *am* *pa-* *tris* *et* *ite-* *rum* *ven-* *tu-* *rus* *est* *cum* *glo-* *ria* *ven-* *tu-* *rus* *est* *cum* *glo-* *-* *-* *ria* *judi-* *ca* *re* *vi-* *vos* *et* *mor-* *tuos* *cujus*
am *glo-* *ria* *cum* *glo-* *ri-* *a* *judi-* *ca* *re* *vi-* *vos* *et* *mor-* *tuos* *cujus*
cum *glo-* *ri-* *a* *cum* *glo-* *ri-* *a* *judi-* *ca* *re* *vi-* *vos* *et* *mor-* *tuos* *cujus*
cum *glo-* *-* *-* *ria* *judi-* *ca* *re* *vi-* *vos* *et* *mor-* *tuos* *cujus*

Corni

Clarinetti

Clarinetti

6/4 47

8/2 27

6/4 47

5/4 3

7/4 4

5/4 4

9/8 8

6/8 8

8/7 6/4 47

8/7 6/4 47

Corni
Clarinetti
Clarini
Timp.

patre et filio simul ado - ratum et conglorifi - catur qui locutus est per prophetas et unam sanctam Catholicam apo -

Corni

Clarinetti

Clarini

Timp.

Figured bass notation: 6 4, 7 4, b7, 3 4, 8 4, 7 4, 8 4, 6 4

stolicam ec - clesiam con - fiteor - unum bap - tis - ma in remissi - onem pecca - to - rum

Corni

Clarinetti

Clavini

Timp.

6 - - 4 6 - 8 8 9 8 4 9 - 8 9 - 8 5 9 - 8 7 6 7 6 4 7 6

Handwritten musical notation on a single staff, featuring complex rhythmic patterns and notes.

Handwritten musical notation on a single staff, featuring notes and rests.

Handwritten musical notation on a single staff, featuring notes and rests.

Handwritten musical notation on a single staff, featuring lyrics: *Aospecto seurecti - onem mortu - orum, resu - recti - onem mor - tu - o - rum, et vitam ven -*

Handwritten musical notation on a single staff, featuring notes and rests.

Handwritten musical notation on a single staff, featuring notes and rests.

Handwritten musical notation on a single staff, featuring notes and rests.

Coeni

Handwritten musical notation on a single staff, featuring notes and rests.

Clarinetti

Handwritten musical notation on a single staff, featuring notes and rests.

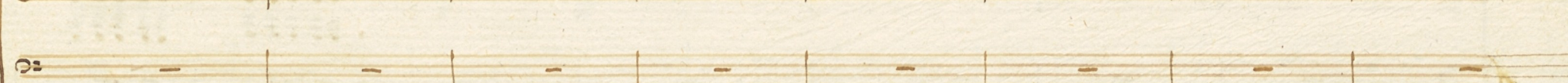
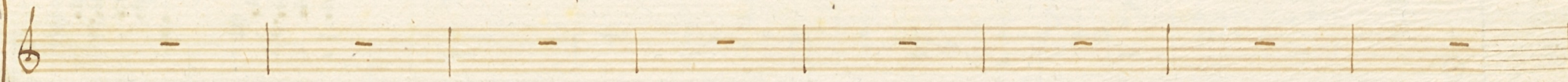
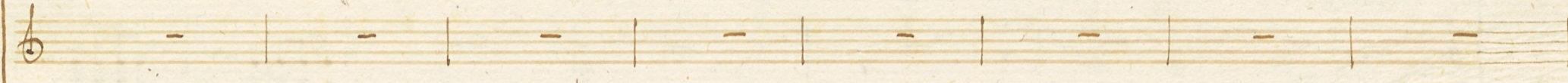
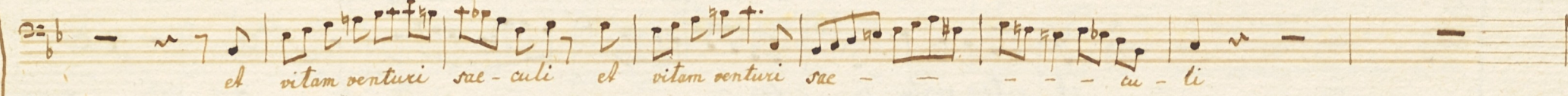
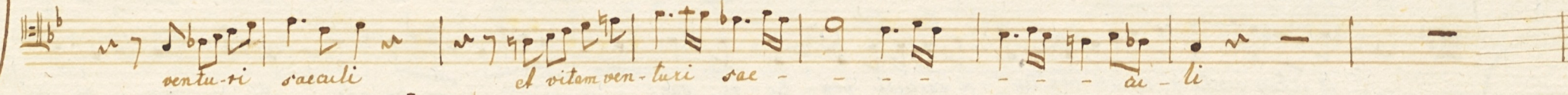
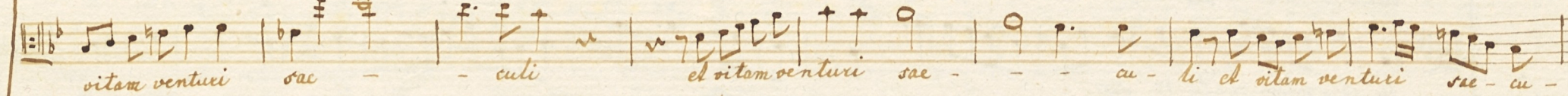
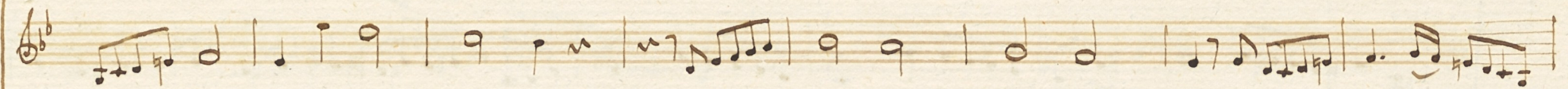
Clavini

Handwritten musical notation on a single staff, featuring notes and rests.

Timp.

Handwritten musical notation on a single staff, featuring notes and rests.

Handwritten musical notation on a single staff, featuring figured bass notation with numbers like 6, 7, 8, 9, 4, 5, 6, 7.



Handwritten musical score for vocal parts with lyrics: *vitam venturi sae - - - - - cu - li a - men a -*
li et vitam ventu - ri sae - - - - - cu - li a - men a -
et vitam ventu - ri saeculi ven - tu - ri saeculi ven - tu - ri sae - - - - - cu - li a - men a -
et vitam ventu - ri sae - - - - - cu - li a - men a -

Corni
Clarinetto
Clarin
Timp.

Handwritten musical score for instrumental parts: Cello, Org. e Violone, and strings. Includes figured bass notation and the instruction *tasto*.

men, et vitam venturi sae - - - - - cu - li amen a - men et vitam ven - tu - ri -

men et vitam venturi sae - - - - - cu - li amen a - men et

men amen vi - tam venturi sae - - - - - cu - li amen amen et

men, et vitam ven - turi sae - - - - - cu - li amen a - men et vitam ven - tu - ri

Corni

Clarinetti

Clarini

Timp.

tasto

sae-cu-li et vitam ven-tu-ri saecu-li et vitam ven-turi saecu-li a-men a-men.

sae-cu-li et vitam ven-turi saecu-li et vitam ven-turi saecu-li a-men a-men.

Corni

Clarinetti

Clarini

Timp.

unisono