



STATISTIČNE INFORMACIJE RAPID REPORTS

21. FEBRUAR 2005
21. FEBRUARY 2005

št./No 41

22 TRANSPORT TRANSPORT

št./No 3

TRANSPORT, SLOVENIJA, DECEMBER 2004

TRANSPORT, SLOVENIA, DECEMBER 2004

Gibanje dejavnosti v transportu v **decembru 2004** v primerjavi z **novembrom 2004**:

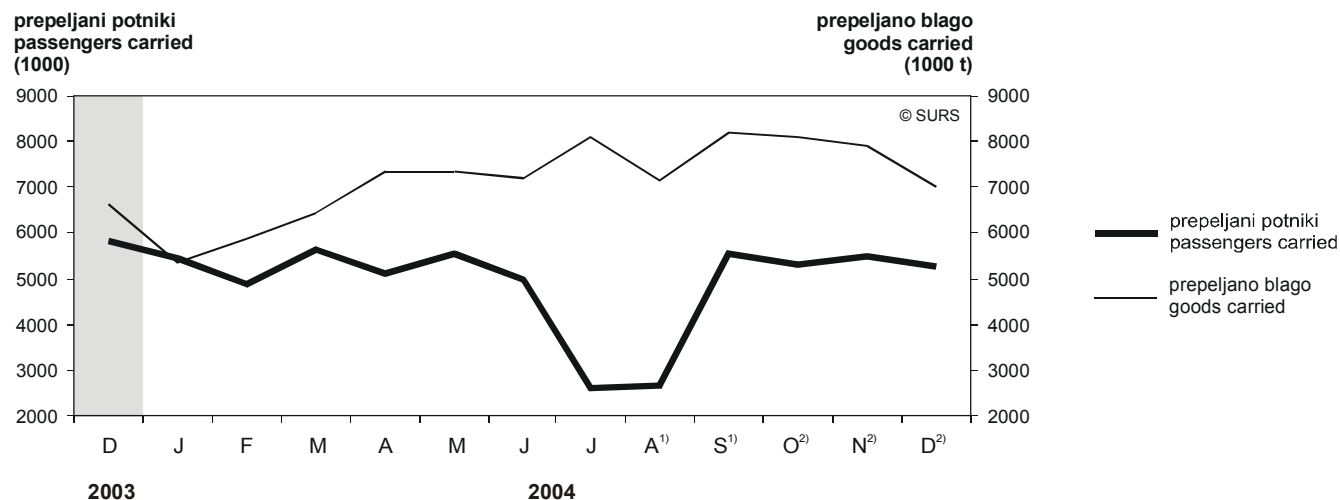
- ▶ **Število prepeljanih potnikov:**
 - vse transportne panoge skupaj: -4,1 % (ocena);
 - cestni prevoz: -2,6 % (ocena);
 - železniški prevoz: -8,2 % (ocena);
 - zračni prevoz: -5,6 %.
- ▶ **Obseg prepeljanega blaga:**
 - vse transportne panoge skupaj: -11,4 % (ocena);
 - cestni prevoz: -13,7 % (ocena);
 - železniški prevoz: -6,5 %;
 - pomorski prevoz: +1,2 %.
- ▶ **Mestni potniški prevoz:** -1,2 % (ocena).
- ▶ **Število prihodov potnikov čez cestne mejne prehode:** +3,2 % (ocena).
- ▶ **Letališki potniški promet:** +1,9 %.
- ▶ **Pristaniški blagovni promet:** -19,2 % (ocena).
- ▶ **Prekladanje:** -5,9 %.
- ▶ **Število prvič registriranih cestnih motornih vozil:** -4,6 %.
- ▶ **Število prvič registriranih osebnih avtomobilov:** -8,5 %.
- ▶ **Transport plina:** +12,1 %.

Changes in transport in **December 2004** in comparison with **November 2004**:

- ▶ **The number of passengers carried:**
 - All modes of transport: -4.1% (estimate);
 - Road transport: -2.6% (estimate);
 - Railway transport: -8.2% (estimate);
 - Air transport: -5.6%.
- ▶ **The volume of goods carried:**
 - All modes of transport: -11.4% (estimate);
 - Road transport: -13.7% (estimate);
 - Railway transport: -6.5%;
 - Maritime transport: +1.2%.
- ▶ **Urban passenger transport:** -1.2% (estimate).
- ▶ **Road cross-border entries of passengers:** +3.2% (estimate).
- ▶ **Airport passenger traffic:** +1.9%.
- ▶ **Harbour goods traffic:** -19.2% (estimate).
- ▶ **Transshipment:** -5.9%.
- ▶ **Road motor vehicles, registered for the first time:** -4.6%.
- ▶ **Passenger cars, registered for the first time:** -8.5%.
- ▶ **Transport of gas:** +12.1%.

Slika 1: Prepeljani potniki in blago, Slovenija, december 2003 - december 2004

Chart 1: Passengers and goods carried, Slovenia, December 2003 - December 2004

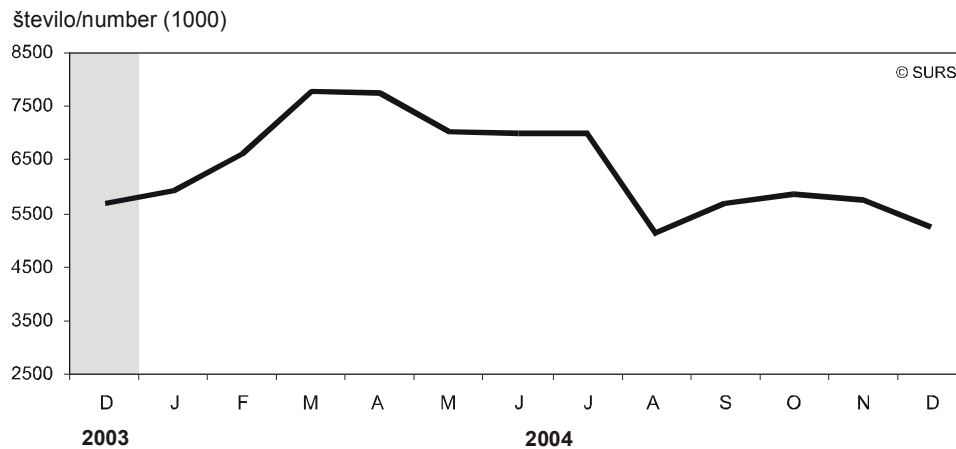


1) Prepeljani potniki - ocenjeni podatki.
Passengers carried - estimations.

2) Prepeljani potniki in prepeljana blago - ocenjeni podatki.
Passengers carried and goods carried - estimations.

Slika 2: Prvič registrirani osebni avtomobili, Slovenija, december 2003 - december 2004

Chart 2: Passenger cars, registered for the first time, Slovenia, December 2003 - December 2004



1. Prevoz potnikov in blaga po transportnih panogah, Slovenija, december 2004

Transport of passengers and goods by modes of transport, Slovenia, December 2004

	XI 04	XII 04	I-XII 04	Indeksi / Indices			
				XII 04	XII 04	I-XII 04	
				XI 04	XII 03	I-XII 03	
Prepeljani potniki - skupaj	(5495)	(5270)	(58363)	(95,9)	(90,6)	(82,8)	Passengers carried - total
cestni prevoz (1000)	(3996)	(3893)	(42601)	(97,4)	(87,6)	(78,1)	by road (1000)
železniški prevoz (1000)	(1442)	(1323)	(14878)	(91,8)	(100,3)	(98,8)	by railway (1000)
zračni prevoz (1000)	58	54	885	94,4	96,2	102,4	by air (1000)
Prepeljano blago - skupaj	(7913)	(7009)	(86121)	(88,6)	(105,4)	(104,3)	Goods carried - total
cestni prevoz (1000 t)	(5904)	(5098)	(63890)	(86,3)	(103,3)	(102,7)	by road (1000 t)
železniški prevoz (1000 t)	1592	1488	17876	93,5	104,0	103,5	by railway (1000 t)
pomorski prevoz (1000 t)	418	423	4354	101,2	147,0	138,9	by sea (1000 t)
Potniški km - skupaj	(208,1)	(202,8)	(2589,9)	(97,4)	(101,7)	(96,9)	Passenger-km - total
cestni prevoz (mio pkm)	(85,2)	(85,1)	(925,3)	(99,8)	(104,6)	(86,9)	by road (mio pkm)
železniški prevoz (mio pkm)	(69,9)	(65,9)	(768,8)	(94,3)	(103,5)	(98,9)	by railway (mio pkm)
zračni prevoz (mio pkm)	53,0	51,8	895,8	97,6	95,2	107,0	by air (mio pkm)
Tonski km - skupaj	(4390,6)	(4932,7)	(48381,9)	(112,3)	(149,7)	(127,5)	Tonne-km - total
cestni prevoz (mio tkm)	(733,3)	(619,1)	(7872,4)	(84,4)	(115,6)	(124,9)	by road (mio tkm)
železniški prevoz (mio tkm)	315,2	293,1	3462,6	93,0	104,9	105,8	by railway (mio tkm)
pomorski prevoz (mio tkm)	3342,1	4020,5	37047,0	120,3	162,2	130,6	by sea (mio tkm)

2. Potniški in blagovni promet in prevoz ter registrirana motorna cestna vozila, Slovenija, december 2004

Transport of passengers and goods and registered road motor vehicles, Slovenia, December 2004

	XI 04	XII 04	I-XII 04	Indeksi / Indices			
				XII 04	XII 04	I-XII 04	
				XI 04	XII 03	I-XII 03	
Mestni potniški prevoz (1000)	(10141)	(10017)	(100197)	(98,8)	(103,0)	(101,9)	Urban passenger transport (1000)
Prihodi potnikov čez cestne mejne prehode (1000)	6117	(6314)	(91874)	(103,2)	(103,0)	(107,3)	Road cross-border entries of passengers (1000)
Letališki potniški promet (1000)	72	73	1048	101,9	128,4	113,7	Airport passenger traffic (1000)
Pristaniški blagovni promet (1000 t)	(1234)	(997)	(12166)	(80,8)	(92,7)	(112,8)	Harbour goods traffic (1000 t)
Prekladanje (1000 premanipuliranih ton)	2338	2200	24038	94,1	86,8	98,0	Transshipment (manipulated tons 1000)
Prvič registrirana cestna motorna vozila	6909	6588	97227	95,4	97,2	111,5	Road motor vehicles, registered for the first time
Prvič registrirani osebni avtomobili	5746	5256	76725	91,5	92,5	111,3	Passenger cars, registered for the first time
Transport plina (mio m ³)	109	122	1096	112,1	101,6	99,1	Transport of gas (mio m ³)

STATISTIČNA ZNAMENJA

-	ni pojava
...	ni podatka
∅	povprečje
*	popravljen podatek
0	podatek je manjši od 0,5 dane merske enote
0,0	podatek je manjši od 0,05 dane merske enote
+	in več (let, članov...)
1)	označba za opombo pod tabelo
()	nezadostno preverjen ali ocenjen podatek
z	podatek zaradi zaupnosti ni objavljen

METODOLOŠKA POJASNILA

Namen statističnega raziskovanja

je mesečno spremljanje gibanja dejavnosti v različnih panogah transporta.

Enote opazovanja

Enote opazovanja so poslovni subjekti, registrirani v področju dejavnosti Promet, skladiščenje in zveze (področje I v Standardni klasifikaciji dejavnosti).

Viri in zajetje

Večino podatkov smo zbrali z rednimi statističnimi raziskovanji s področja statistike transporta. Podatke o registriranih motornih vozilih nam je posredovalo Ministrstvo za notranje zadeve, podatke o transportu plina pa oddelek za statistiko energetike na Statističnem uradu republike Slovenije.

Podatke o **železniškem prevozu** smo z rednimi statističnimi raziskovanji zbrali pri Slovenskih železnicah.

O **cestnem potniškem prevozu** v javnem prometu nam poročajo poslovni subjekti, registrirani za to dejavnost. Izbor poročevalskih enot pripravimo v januarju tekočega leta, tako da določimo spodnji prag na osnovi doseženega prihodka v določenem preteklem obdobju in števila zaposlenih oseb (pet in več). Prevoza potnikov, ki ga opravljajo samostojni podjetniki in prevoza potnikov s taksiji in osebnimi avtomobili nismo upoštevali.

O **cestnem blagovnem prevozu** nam poročajo poslovni subjekti, ki imajo v lasti, najemu ali upravljanju registrirana tovorna motorna vozila z vsaj 1,5 tone nosilnosti, in sicer tako v javnem prevozu kot tudi prevozu za lastne potrebe. Osnova za izdelavo četrtrletnega vzorca je Register motornih vozil, ki ga vodi ministrstvo za notranje zadeve. Opazovana enota je registrirano tovorno motorno vozilo z vsaj 1,5 tone nosilnosti v določenem tednu opazovanja.

O **mestnem, zračnem in pomorskem prevozu** potnikov in blaga poročajo poslovni subjekti, ki so registrirani za posamezne našete transportne panoge.

O **letališkem prometu** nam poročajo letališča Ljubljana, Maribor in Portorož.

Podatke o **cestnih mejnih prehodih** preko »meja« z Avstrijo, Italijo in Madžarsko nam od 1. 5. 2004 sporoča MNZ – Sektor mejne policije. Po dogovoru z njimi bomo te podatke prejemali v prehodnem obdobju – do uveljavitve meja po Schengenskem sporazumu. O mejnem potniškem in blagovnem prometu na meji s Hrvaško nam poročajo carinski uradi. Ti

STATISTICAL SIGNS

-	no occurrence of event
...	data not available
∅	average
*	corrected data
0	value not zero but less than 0,5 of the unit employed
0,0	value not zero but less than 0,05 of the unit employed
+	and more (years, members,...)
1)	footnote
()	incomplete or estimated data
z	data not published because of confidentiality

METHODOLOGICAL EXPLANATIONS

The purpose of the survey

is monthly monitoring of trends in various modes of transport.

Observation units

Observation units are business entities registered in the field of transport, storage and communication (section I of the Standard Classification of Activities).

Sources and coverage

Most of the data are compiled from regular statistical surveys in the area of transport. Data on registered motor vehicles were supplied by the Ministry of the Interior and data on transport of gas by Department for energy statistics of Statistical Office of the Republic of Slovenia.

Data on **railway transport** were collected by the Slovenian Railways.

Under **road passenger transport** for hire and reward we cover selected business entities whose registered activity is road carriage of passengers. The selection of units is made in January and the lower threshold is defined on the basis of the turnover achieved in a certain past period and the number of employees (at least five). Transport of passengers by buses by individual entrepreneurs and transport of passengers by taxis and passenger cars are not included.

Under **road goods transport** we cover selected business entities which are owner, leaseholder or manager of registered goods motor vehicle with at least 1.5 tonne of load capacity for hire or reward or own account. The basis of the quarterly sample is the Register of Motor Vehicles at the Ministry of the Interior. The observation unit is a registered goods motor vehicle with at least 1.5 tonne of load capacity in the defined week of observation.

We receive reports on **urban, air and maritime transport** of passengers and goods from business entities registered for the mentioned modes of transport.

Reports on **airport traffic** are sent by airports Ljubljana, Maribor and Portorož.

Since 1 May 2004, data on **road cross-border entries** with Austria, Italy and Hungary have been supplied by the Ministry of the Interior – Border Police Sector. According to the agreement, we will be receiving these data in the transition period – until the Schengen borders are enforced. Reports on road cross-border entries of passengers with Croatia are sent



pridobijo osnovne podatke o potniškem prometu od mejne policije. V podatke o mejnih prehodih v cestnem prometu so zajeti mednarodni, meddržavni in obmejni prehodi. Pri obmejnih prehodih upoštevamo tiste, prek katerih je mogoč prehod s cestnimi vozili.

V informaciji o **prekladalni dejavnosti** je zajeta pristaniška in kopenska prekladalna dejavnost. O prvi poroča Luka Koper, o drugi pa poročajo podjetja in druge organizacije, registrirane za to dejavnost.

Način zbiranja podatkov

Podatke pridobimo z naslednjimi mesečnimi (tedenskimi) vprašalniki:

- TR-CES-B/T (Tedensko poročilo o cestnem blagovnem prevozu)
- TR-CES-P/M (Mesečno poročilo o cestnem potniškem prevozu)
- TR-ŽEL/M (Mesečno poročilo o železniškem transportu)
- TR-ZRA/M (Mesečno poročilo o zračnem transportu)
- TR-LET/M (Mesečno poročilo o letališkem prometu)
- TR-POM/M (Mesečno poročilo o pomorskem transportu)
- TR-PRI-P/M (Prijava prihoda ladje v pristanišče)
- TR-PRI-O/M (Prijava odhoda ladje iz pristanišča)
- TR-MEJ-CM/M (Mesečno poročilo o cestnih mejnih prehodih, mednarodni in meddržavni promet)
- TR-MEJ-CO/M (Mesečno poročilo o cestnih mejnih prehodih, obmejni promet)
- TR-PRE/M (Mesečno poročilo o prekladanju v pristaniščih in na drugih prekladalnih mestih)

Definicije

Prevoz potnikov v vseh transportnih panogah zajema prevoz potnikov po železnici, cesti in zraku.

Potniški km je merska enota, ki pomeni prevoz enega potnika na razdalji enega kilometra.

Prevoz blaga v vseh transportnih panogah zajema prevoz blaga po železnici, cesti in morju.

Tonski km je merska enota, ki pomeni prevoz ene tone blaga na razdalji enega kilometra.

Pri **pomorskem prevozu** blaga se tonske milje preračunajo v tonske km tako, da se le-te pomnožijo s koeficientom 1,852.

V **letališkem prometu** upoštevamo javni promet, in sicer prispele in odpotovale potnike ter potnike v direktnem tranzitu.

V **pristaniškem prometu** upoštevamo prispelo in odpremljeno blago.

V podatkih o **prometu na cestnih mejnih prehodih** upoštevamo potnike, ki so prispeli v našo državo čez cestne mejne prehode.

V podatkih o **prvih registriranih cestnih motornih vozilih** upoštevamo motorna kolesa (od januarja 2002 tudi mopede), osebne avtomobile, avtobuse, tovorne avtomobile, vlačilce, tovorna specialna vozila, kombinirana vozila, specialna vozila (osebna specialna in delovna vozila) ter kmetijske traktorje, ne glede na leto izdelave.

Premanipulirana tona je enota, ki pomeni eno premeščanje (ena sprememba lokacije) ene tone blaga (ne glede na razdaljo).

to us by customs offices, which obtain basic data from border police. Cross-border traffic by road is understood to include international, interstate and local border crossings. We take into account those local border crossings, where cross-border traffic by road vehicles is possible.

Information on **transshipment activity** covers harbour and land transshipment. Reports on the former are sent by the Koper Port, and reports on the latter are sent by enterprises and companies registered for this activity.

Method of data collection

We collect data with monthly (weekly) questionnaires:

- TR-CES-B/T (Weekly Report on Road Goods Transport)
- TR-CES-P/M (Monthly Report on Road Passenger Transport)
- TR-ŽEL/M (Monthly Report on Railway Transport)
- TR-ZRA/M (Monthly Report on Air Transport)
- TR-LET/M (Monthly Report on Airport Traffic)
- TR-POM/M (Monthly Report on Maritime Transport)
- TR-PRI-P/M (Report on Arrival of the Vessel to the Port)
- TR-PRI-O/M (Report on Departure of the Vessel from the Port)
- TR-MEJ-CM/M (Monthly Report on Road Border Crossings, International and Interstate Traffic)
- TR-MEJ-CO/M (Monthly Report on Road Border Crossings, Local Traffic)
- TR-PRE/M (Monthly Report on Transshipment in Ports and other Transshipment Places)

Definitions

Passengers carried in all modes of transport include transport of passengers by rail, road and air.

Passenger-km is a unit of measure representing the transport of one passenger over one kilometre.

Goods carried in all modes of transport include transport of goods by rail, road and sea.

Tonne-km is a unit of measure representing the transport of one tonne of goods over one kilometre.

In **maritime transport of goods** conversion of tonne-miles into tonne-kilometres is needed. It is necessary to multiply tonne-miles with the coefficient 1.852.

Airport traffic covers public transport, namely arrivals and departures of passengers, and passengers in direct transit.

Harbour traffic covers both arrived and dispatched goods.

Data on **passenger cross-border traffic by road** cover all passengers who arrived from abroad to the state border.

Motorcycles (since January 2002 mopeds are also included), passenger cars, buses, lorries, road tractors, special lorries, combined vehicles (special passenger cars and service vehicles) and agricultural tractors are included in **road motor vehicles registered for the first time, irrespective of the year of production**.

Manipulated tonne is one transfer (one change of location) of one tonne of goods, irrespective of the distance.



Objavljanje podatkov

Mesečno:

Statistične informacije. Transport

Statistične informacije. Mejni prehodi

Nekateri pomembnejši podatki Republike Slovenije

Mesečni statistični pregled

Letno:

Statistični letopis

Rezultati raziskovanj. Letni pregled transporta

Publishing

Monthly:

Rapid Reports. Transport

Rapid Reports. Cross-border traffic

Some Important Data of the Republic of Slovenia

Monthly Statistical Review

Yearly:

Statistical Yearbook

Results of Surveys - Annual Review of Transport

Sestavila / Prepared by: Mojca Zlobec, Vojin Šegan

Izdaja, založba in tisk Statistični urad Republike Slovenije, Ljubljana, Vožarski pot 12 - **Uporaba in objava podatkov dovoljena le z navedbo vira** - Odgovarja generalna direktorica mag. Irena Križman - Urednica zbirke Statistične informacije Marina Urbas - Slovensko besedilo jezikovno uredila Ivanka Zobec - Angleško besedilo jezikovno uredil Boris Panič - Naklada 110 izvodov - ISSN zbirke Statistične informacije 1408-192X - ISSN podzbirke Transport 1854-1283 - Informacije daje Informacijsko središče, tel.: (01) 241 51 04 - El. pošta: info.stat@gov.si - <http://www.stat.si>

Edited, published and printed by the Statistical Office of the Republic of Slovenia, Ljubljana, Vožarski pot 12 - **These data can be used provided the source is acknowledged** - Director-General Irena Križman - Rapid Reports editor Marina Urbas - Slovene language editor Ivanka Zobec - English language editor Boris Panič - Total print run 110 copies - ISSN of Rapid Reports 1408-192X - ISSN of subcollection Transport 1854-1283 - Information is given by the Information Centre of the Statistical Office of the Republic of Slovenia, tel.: +386 1 241 51 04 - E-mail: info.stat@gov.si - <http://www.stat.si>